

19 Tyldesley Street, Moss Side, Manchester, M14 4JW

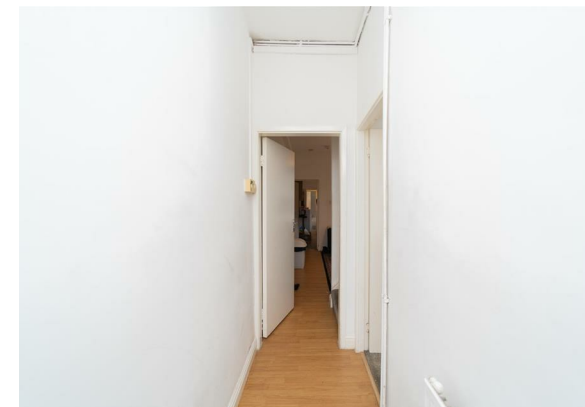


JP & Brimelow
ESTATE AGENTS

Offers In The Region Of £170,000




VIDEO TOUR AVAILABLE A well-presented and extended TWO DOUBLE BEDROOM mid terraced property located off Great western Street. Situated a short drive from Manchester city centre, with good transport links on Princess parkway, close to Alexandra Park with a selection of sports activities, Hough End leisure centre in the direction of West Didsbury and Claremont Primary School nearby. In brief, the well-planned accommodation comprises an entrance hall, Lounge to the front aspect, dining room, kitchen, access out into the rear and a white three-piece bathroom. To the first floor there is landing leading to two double bedrooms. The property benefits from gas fired central heating. To the rear aspect there is a timber gate leading to a communal alleyway.





EPC Chart

Energy Efficiency Rating		Current	Potential
Very energy efficient - lower running costs			
(92 plus) A			86
(81-91) B			
(69-80) C		70	
(55-68) D			
(39-54) E			
(21-38) F			
(1-20) G			
Not energy efficient - higher running costs			
England & Wales		EU Directive 2002/91/EC 	

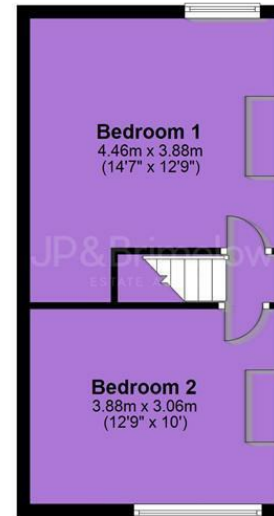


Tenure: **Freehold** Council Tax Band:

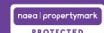
Ground Floor



First Floor



JP & Brimelow Estate Agents Ltd
430 Barlow Moor Road, Manchester, M21 8AD
Tel: 0161 8822233
E: sales@jpbrimelow.co.uk www.jpandbrimelow.co.uk



JP & Brimelow
ESTATE AGENTS

NOTICE: JP & Brimelow Estate Agents Ltd for themselves and for the vendors or lessors of this property whose agents they are give notice that:

- (i) the particulars are set out as a general outline only for the guidance of intending purchasers or lessees, and do not constitute, nor constitute part of, an offer or contract;
- (ii) all descriptions, dimensions, references to the condition and necessary permissions for use and occupation, and other details are given in good faith and are believed to be correct but any intending purchasers or tenants should not rely on them as statements or representations of fact but must satisfy themselves by inspection or otherwise as to the correctness of each of them;
- (iii) no person in the employment of JP & Brimelow Estate Agents Ltd has any authority to make or give any representation or warranty whatever in relation to this property.

jpandbrimelowstateagents

@jpandbrimelow