

Dalefield, 1 Carlton Road, Urmston, Trafford, M41 9GJ



**JP & Brimelow**  
ESTATE AGENTS



4 2 3 D

**\*\*VIDEO TOUR AVAILABLE\*\*** Located in the heart of Urmston is this stunning double fronted, semi-detached home found on a highly regarded residential road.

The period facade remains, while the interiors have been tastefully updated with so many stunning original period features such as stained and leaded glazing which extends over the two floors.

Access is gained through a striking entrance reception hallway leading to three reception rooms, an inner hallway, utility room and a downstairs three-piece shower room. There is a sitting room with a stained and leaded bay window to the front aspect, a dining room through to a fitted kitchen and a lounge with a stunning fireplace and views to the front lawned garden.

Stairs leading to the first-floor landing that provides access to a master bedroom with a feature bay window complete with stunning stained-glass panels, as well as a further three double bedrooms and three-piece bathroom.

The residence boasts an abundance of original features and charming character throughout. This includes stunning fireplaces, picture railings, ceiling coving, and stained glazing, all contributing to its allure. Additionally, the property features an impressive enclosed garden complete with a gated and secluded driveway with a garage which has approved planning permission to be converted into a single story annex.

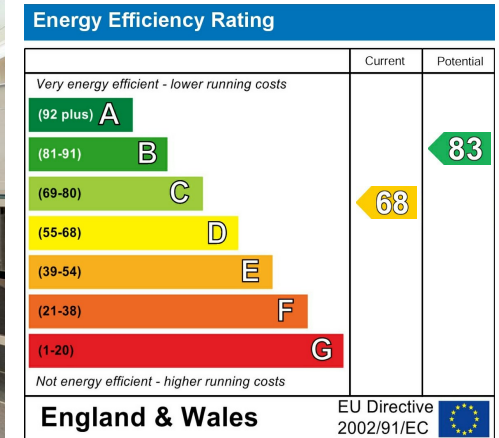
The train station is close by, giving direct access to Manchester city centre.

£825,000



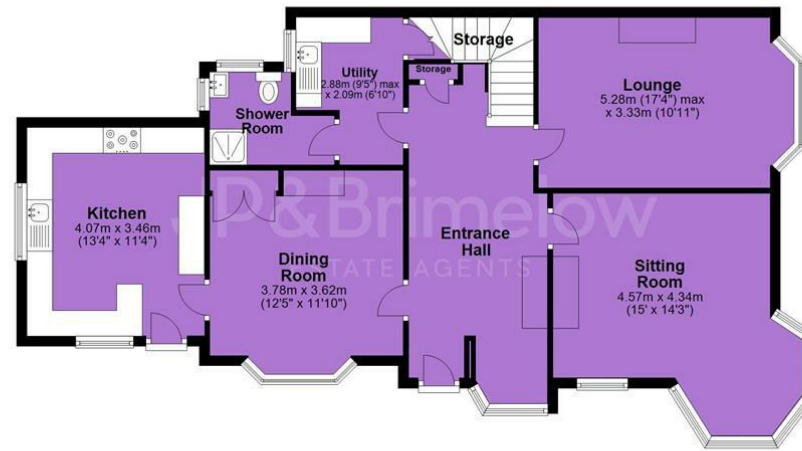


## EPC Chart

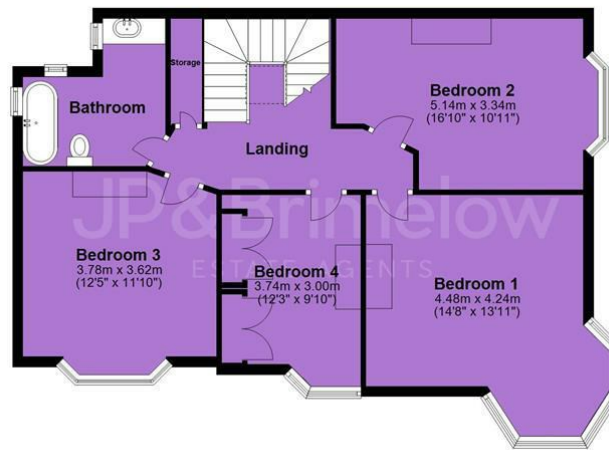


Tenure: Freehold Council Tax Band: F

Ground Floor



First Floor



JP & Brimelow Estate Agents Ltd  
 430 Barlow Moor Road, Manchester, M21 8AD  
 Tel: 0161 8822233  
 E: sales@jpbrimelow.co.uk www.jpandbrimelow.co.uk



**JP & Brimelow**  
 ESTATE AGENTS

NOTICE: JP & Brimelow Estate Agents Ltd for themselves and for the vendors or lessors of this property whose agents they are give notice that:

- (i) the particulars are set out as a general outline only for the guidance of intending purchasers or lessees, and do not constitute, nor constitute part of, an offer or contract;
- (ii) all descriptions, dimensions, references to the condition and necessary permissions for use and occupation, and other details are given in good faith and are believed to be correct but any intending purchasers or tenants should not rely on them as statements or representations of fact but must satisfy themselves by inspection or otherwise as to the correctness of each of them;
- (iii) no person in the employment of JP & Brimelow Estate Agents Ltd has any authority to make or give any representation or warranty whatever in relation to this property.

jpandbrimelowstateagents

@jpandbrimelow

