

265 Withington Road, Chorlton, Manchester, M21 0ZA



JP & Brimelow
ESTATE AGENTS



4 1 3 D

VIDEO TOUR AVAILABLE A bay fronted FOUR BEDROOM bay fronted semi-detached family home. Located on a highly desirable residential road, off Wilbraham Road in Chorlton. The property is close by to both Whalley Range Tennis club and Cricket Club.

This well-planned property consists of; an entrance porch, a reception entrance hallway, a downstairs W.C, a lounge with a bay window to the front aspect, a family room opening out to the rear garden. A dining room and a fitted kitchen complete the ground floor.

On the first floor, you'll find four bedrooms, a fitted two-piece bathroom and a separate W.C.

The property also benefits from many features throughout such as picture railings, ceiling coving, a garage and a long driveway, providing ample off-road parking. A front garden and a good sized rear lawned garden.

Positioned close to transport links with the Metrolink stations on Wilbraham Road and St Werburgh's Road, providing easy access to a range of amenities in Manchester City centre; including theatres, museums and all the excitement of city life.

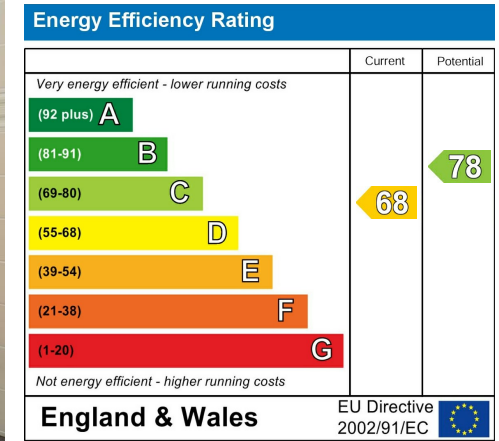
OFFERED WITH NO VENDOR CHAIN.

£600,000



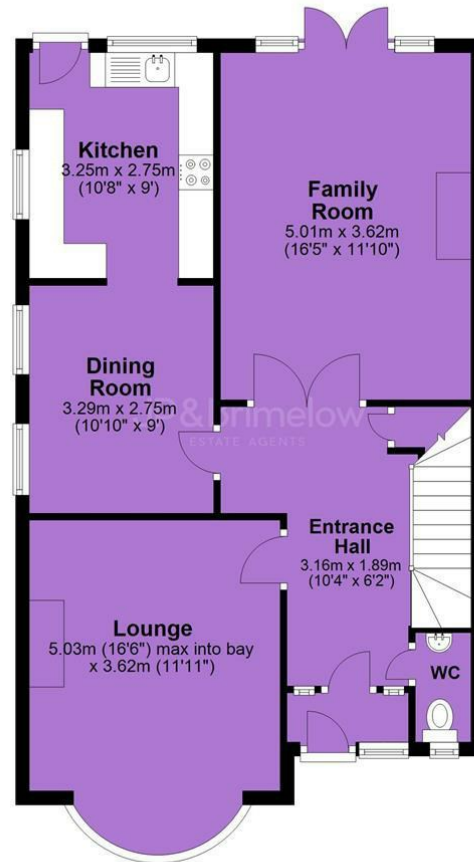


EPC Chart

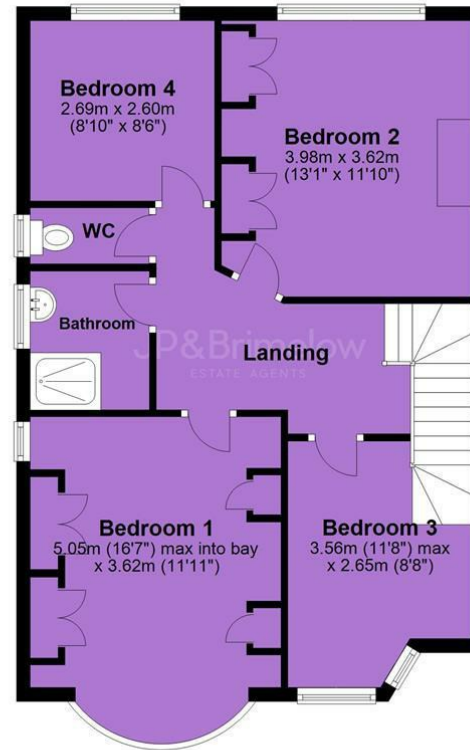


Tenure: Freehold Council Tax Band: D

Ground Floor



First Floor



JP & Brimelow Estate Agents Ltd
430 Barlow Moor Road, Manchester, M21 8AD
Tel: 0161 8822233
E: sales@jpbrimelow.co.uk www.jpandbrimelow.co.uk



JP & Brimelow
ESTATE AGENTS

NOTICE: JP & Brimelow Estate Agents Ltd for themselves and for the vendors or lessors of this property whose agents they are give notice that:

- (i) the particulars are set out as a general outline only for the guidance of intending purchasers or lessees, and do not constitute, nor constitute part of, an offer or contract;
- (ii) all descriptions, dimensions, references to the condition and necessary permissions for use and occupation, and other details are given in good faith and are believed to be correct but any intending purchasers or tenants should not rely on them as statements or representations of fact but must satisfy themselves by inspection or otherwise as to the correctness of each of them;
- (iii) no person in the employment of JP & Brimelow Estate Agents Ltd has any authority to make or give any representation or warranty whatever in relation to this property.

jpandbrimelowstateagents

@jpandbrimelow

