

The Whalley, Apt 3 39 Upper Chorlton Road, Whalley Range, Manchester, M16 7RW



**JP&Brimelow**  
ESTATE AGENTS

# Offers In The Region Of £200,000

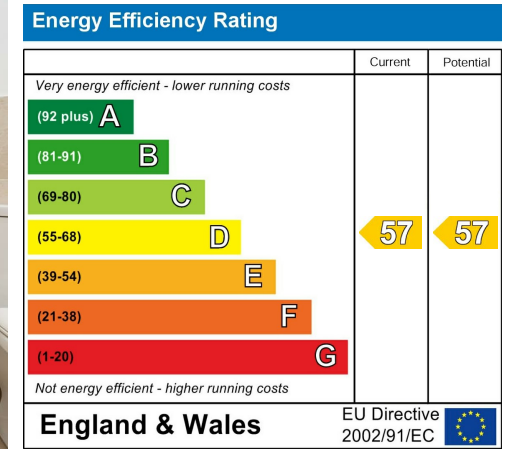


\*\*\*VIDEO TOUR AVAILABLE\*\*\* A stylishly presented TWO DOUBLE BEDROOM, top floor apartment within this attractive detached building here in Whalley Range known as The Whalley. The property is situated in a highly popular residential area, on the borders of Whalley Range and Old Trafford. Within walking distance of the Tesco Extra and the independent shops available on Ayres Road in Old Trafford. There are a number of bus stops on the road giving direct access into the City Centre and Media City. Easy access to Chorlton as well as the Metrolink Station on Seymour Grove. In brief the well-planned accommodation consists of; a communal entrance hall with stairs leading to all floors, a private entrance hallway leading to a fitted kitchen/living room, two double bedrooms and a three-piece bathroom suite. The property benefits from electric heating, secure gated allocated off-road parking and use of the lawned communal garden.



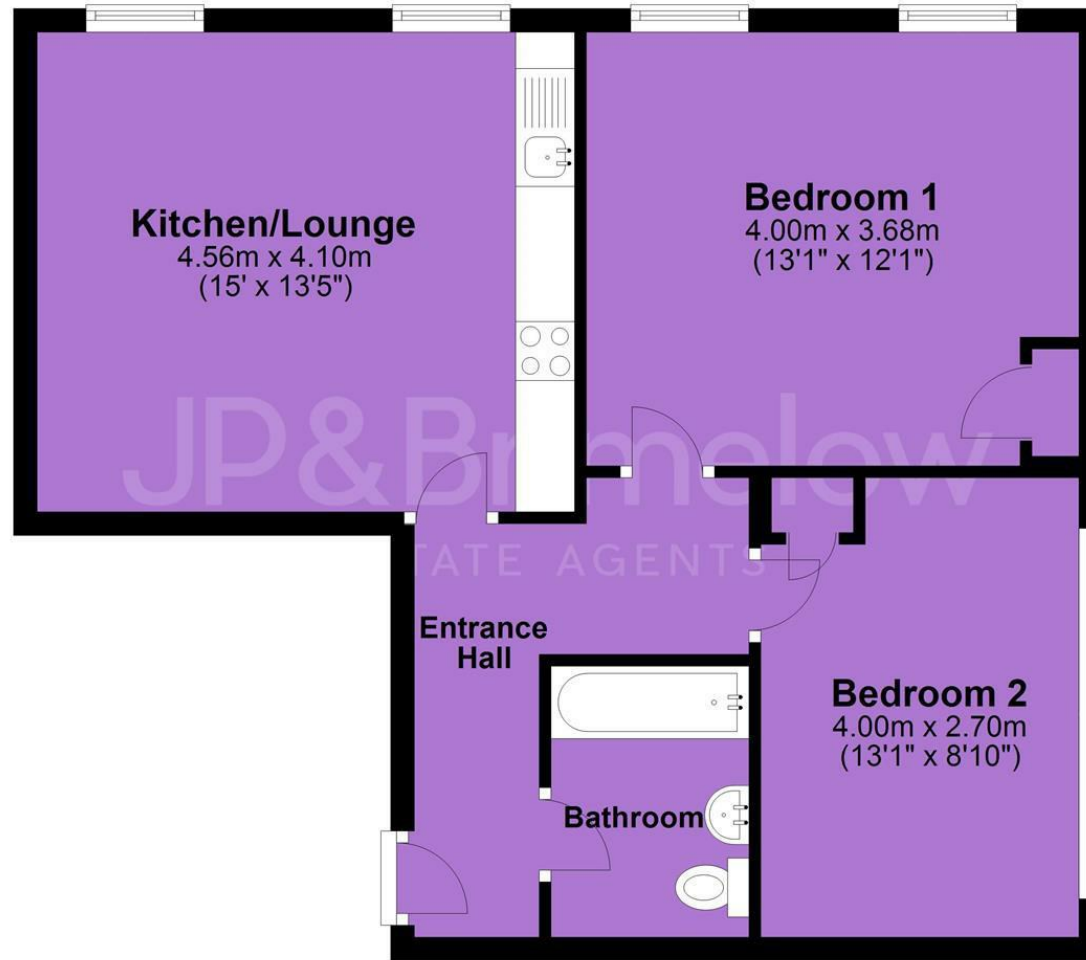


## EPC Chart



Tenure: **Leasehold** Council Tax Band: **B**

## Top Floor



JP & Brimelow Estate Agents Ltd  
430 Barlow Moor Road, Manchester, M21 8AD  
Tel: 0161 8822233  
E: sales@jpbrimelow.co.uk www.jpandbrimelow.co.uk



**JP & Brimelow**  
ESTATE AGENTS

NOTICE: JP & Brimelow Estate Agents Ltd for themselves and for the vendors or lessors of this property whose agents they give notice that:

- the particulars are set out as a general outline only for the guidance of intending purchasers or lessees, and do not constitute, nor constitute part of, an offer or contract;
- all descriptions, dimensions, references to the condition and necessary permissions for use and occupation, and other details are given in good faith and are believed to be correct but any intending purchasers or tenants should not rely on them as statements or representations of fact but must satisfy themselves by inspection or otherwise as to the correctness of each of them;
- no person in the employment of JP & Brimelow Estate Agents Ltd has any authority to make or give any representation or warranty whatever in relation to this property.

 [jpandbrimelowstateagents](https://www.instagram.com/jpandbrimelowstateagents)

 [@jpandbrimelow](https://www.twitter.com/jpandbrimelow)