

8 Lindow Road, Old Trafford, Trafford, M16 0DP



JP&Brimelow
ESTATE AGENTS



4 1 2 D

VIDEO TOUR AVAILABLE A beautiful & well-presented, FOUR BEDROOM, Edwardian, bay fronted semi-detached property situated on this highly popular residential, tree lined road off Seymour Grove here in Old Trafford.

The property is close to the fantastic Seymour Park, several local primary schools and Trafford Grammar Schools, close by to local bus routes and the Metrolink at Firswood or Trafford bar giving direct access into Manchester City Centre.

In brief, the well-planned accommodation comprises; A large reception hall with access into the useful chamber cellars, dining room with bay window to the front aspect, lounge with a box bay window to the front aspect with views into the front garden, kitchen/diner with access into the enclosed rear SOUTH facing garden.

To the first floor there is a landing leading to three double bedrooms and a further bedroom and a three-piece bathroom.

The Hilary Step Bar, shops and the Jam Street Café are all located on Upper Chorlton Road, the local amenities of Chorlton are a short walk. Transport links are excellent with Metrolink stations at Firswood and Trafford Bar providing access to Media City, Manchester International Airport and Manchester City centre life.

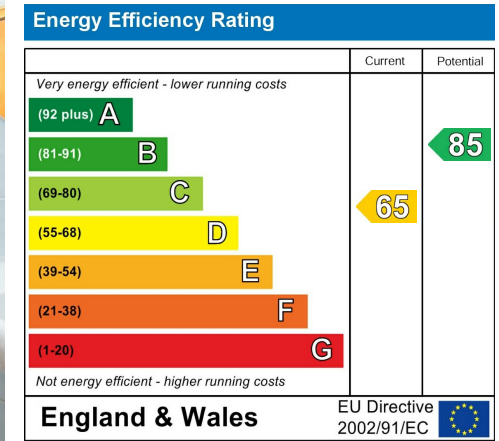
The property retains a host of original features such as high ceilings, coving and picture rails. The property also benefits from a Worcester boiler providing gas fired central heating, useful chamber cellars and a driveway providing off road parking.

£565,000

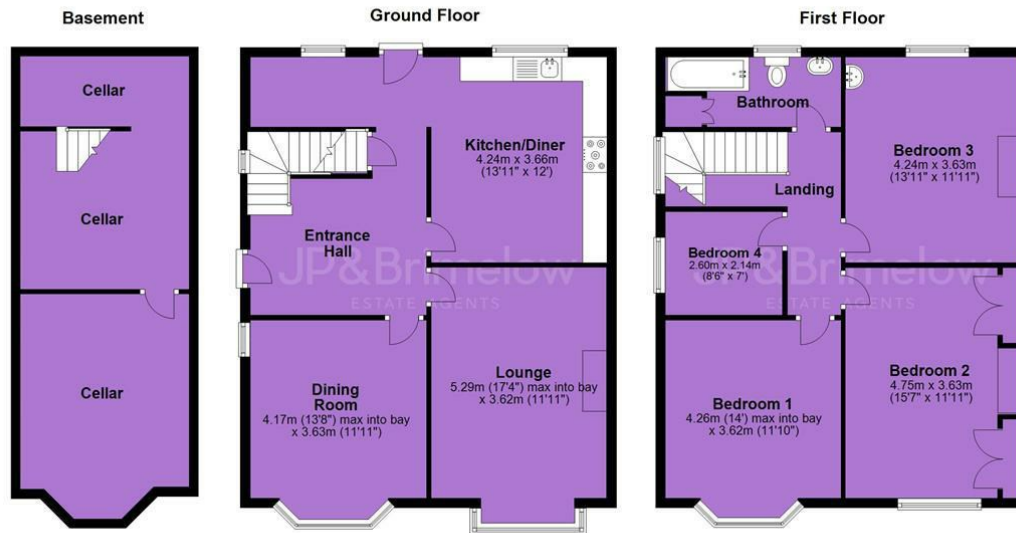




EPC Chart



Tenure: Leasehold Council Tax Band: D



JP & Brimelow Estate Agents Ltd
 430 Barlow Moor Road, Manchester, M21 8AD
 Tel: 0161 8822233
 E: sales@jpbrimelow.co.uk www.jpandbrimelow.co.uk



JP & Brimelow
 ESTATE AGENTS

NOTICE: JP & Brimelow Estate Agents Ltd for themselves and for the vendors or lessors of this property whose agents they are give notice that:

- (i) the particulars are set out as a general outline only for the guidance of intending purchasers or lessees, and do not constitute, nor constitute part of, an offer or contract;
- (ii) all descriptions, dimensions, references to the condition and necessary permissions for use and occupation, and other details are given in good faith and are believed to be correct but any intending purchasers or tenants should not rely on them as statements or representations of fact but must satisfy themselves by inspection or otherwise as to the correctness of each of them;
- (iii) no person in the employment of JP & Brimelow Estate Agents Ltd has any authority to make or give any representation or warranty whatever in relation to this property.

jpandbrimelowstateagents

@jpandbrimelow

