

22 Basford Road, Firwood, Trafford, M16 0GE



JP & Brimelow
ESTATE AGENTS

Offers In The Region Of £400,000




VIDEO TOUR AVAILABLE A well-presented THREE BEDROOM, bay fronted, semi-detached property situated on a tree lined residential road here in Firswood. Within easy walking distance of Chorlton Centre, only a short drive from Manchester City Centre, and moments away from the Metrolink station on Rye Bank Road (Firswood) giving you direct access to Media City, Manchester City centre and Manchester International Airport. Well positioned for the local amenities in Chorlton and locally on Warwick Road South, the property is also close to several good Trafford Primary Schools, and the Hilary Step Bar and Jam Street Cafe on Upper Chorlton Road. The well-planned accommodation comprises; A porch, entrance hall, lounge with bay window to the front aspect, a family room with views into the rear garden, breakfast/Kitchen area with access into the rear west facing garden. To the first-floor a landing reveals three well-proportioned bedrooms and a three-piece family bathroom suite. The property benefits from a gated driveway providing off road parking leading to a useful detached garage, a good-sized rear enclosed lawned garden, warmed by gas fired central heating. OFFERED WITH NO VENDOR CHAIN.





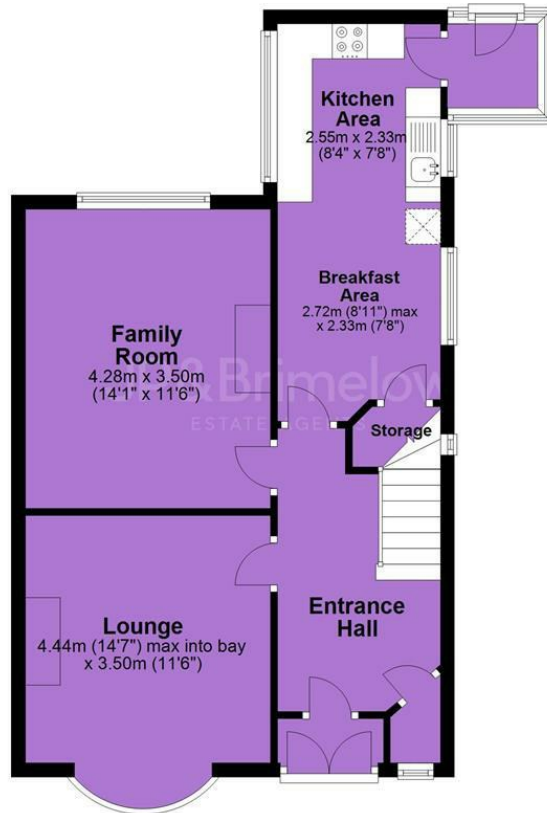
EPC Chart

Energy Efficiency Rating		Current	Potential
<i>Very energy efficient - lower running costs</i>			
(92 plus) A			
(81-91) B			79
(69-80) C		61	
(55-68) D			
(39-54) E			
(21-38) F			
(1-20) G			
<i>Not energy efficient - higher running costs</i>			
England & Wales		EU Directive 2002/91/EC 	

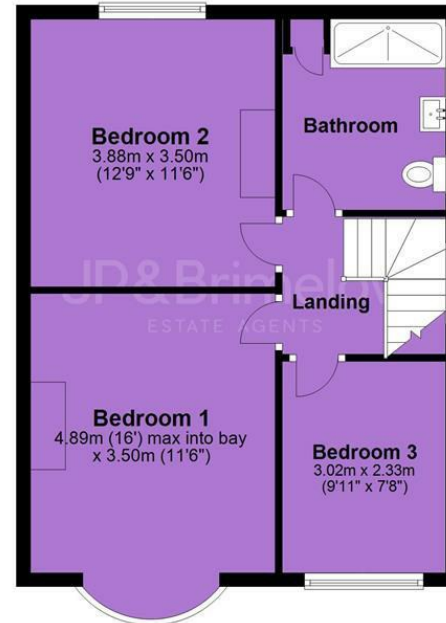


Tenure: **Leasehold** Council Tax Band: **C**

Ground Floor



First Floor



JP & Brimelow Estate Agents Ltd
430 Barlow Moor Road, Manchester, M21 8AD
Tel: 0161 8822233
E: sales@jpbrimelow.co.uk www.jpandbrimelow.co.uk



JP & Brimelow
ESTATE AGENTS

NOTICE: JP & Brimelow Estate Agents Ltd for themselves and for the vendors or lessors of this property whose agents they are give notice that:

- (i) the particulars are set out as a general outline only for the guidance of intending purchasers or lessees, and do not constitute, nor constitute part of, an offer or contract;
- (ii) all descriptions, dimensions, references to the condition and necessary permissions for use and occupation, and other details are given in good faith and are believed to be correct but any intending purchasers or tenants should not rely on them as statements or representations of fact but must satisfy themselves by inspection or otherwise as to the correctness of each of them;
- (iii) no person in the employment of JP & Brimelow Estate Agents Ltd has any authority to make or give any representation or warranty whatever in relation to this property.

jpandbrimelowstateagents

@jpandbrimelow