



CWB

Cheshire West & Bidsley
Management

95a Birling Road, Snodland

Snodland

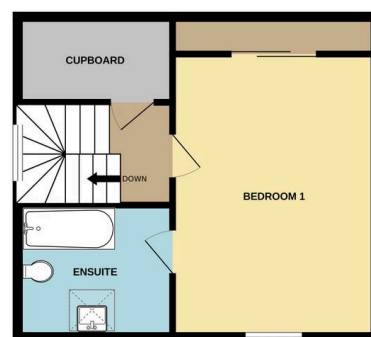
Guide Price £425,000



GROUND FLOOR
590 sq.ft. (54.8 sq.m.) approx.



1ST FLOOR
390 sq.ft. (36.3 sq.m.) approx.



TOTAL FLOOR AREA : 980 sq.ft. (91.1 sq.m.) approx.

Whilst every attempt has been made to ensure the accuracy of the floorplan contained here, measurements of doors, windows, rooms and any other items are approximate and no responsibility is taken for any error, omission or mis-statement. This plan is for illustrative purposes only and should be used as such by any prospective purchaser. The services, systems and appliances shown have not been tested and no guarantee as to their operability or efficiency can be given.

Made with Metrepro ©2025



95a Birling Road

Snodland, Snodland

A super stylish property offering everything you would expect from a detached 3 bedroom property and more! available now to view!

Council Tax band: D

Tenure: Freehold

EPC Energy Efficiency Rating: C

EPC Environmental Impact Rating: C

- Stunning countryside views
- Detached
- 3 Double Bedrooms
- Immaculate Condition
- Open Plan Living
- Driveway

