



 3  
Bedrooms

 1  
Bathroom







Fully Refurbished from top to bottom and ready to move into. This three bedroom Terrace in the sought after St Benedicts area of Snodland is a must view.

Step into the porch where there is plenty of room to store your coats and shoes before entering the huge living/dining room, recently decorated and carpeted with high quality carpet. With large windows to the front and rear this room really lights up.

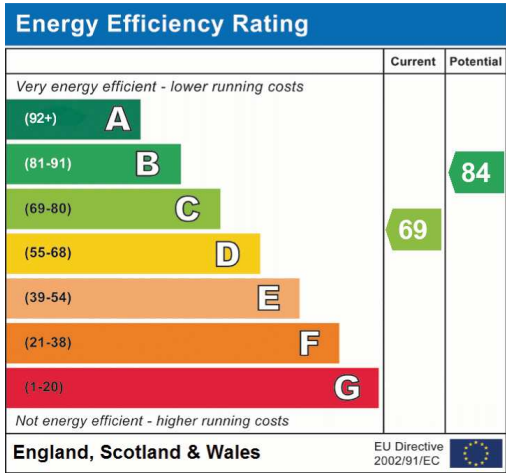
The adjacent kitchen, also finished to a high standard boasts composite worktops and tiled floor.

Upstairs the remodelled bathroom is both modern and minimalist, maximising space and bedrooms 1 and 2 are both great sized doubles and bedroom 3 a single.

Externally the private garden is both laid to lawn and patio and benefits from a shed, whilst there is both off road parking and a garage!

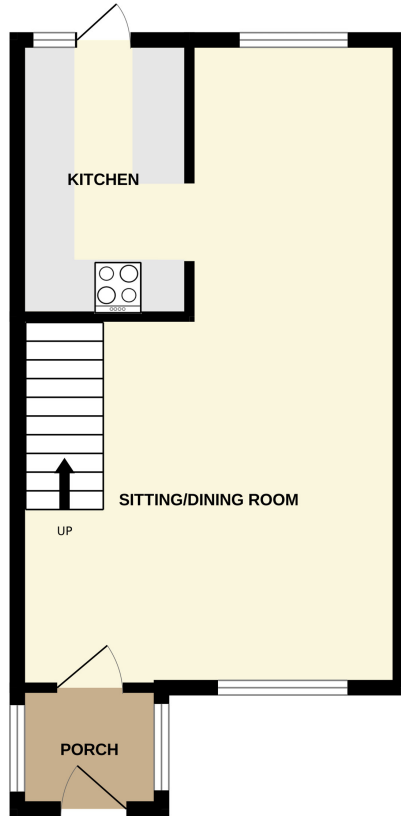
Snodland is located closely to the North Downs in an area of outstanding Natural Beauty benefiting from fabulous walks in all directions from the village. Holly Hill is one of the highest points in Kent with views across to Canary Wharf, head towards Leybourne for walks around the lakes or enjoy riverside walks along the river Medway. Transport links are excellent with the M20 and M2 for easy access to the M25. Rail connections are provided at the nearby Snodland railway station with its fast service into London. For families there is a choice of 'Ofsted Good' rated primary schools, nurserys and Secondary all within walking distance. The village itself has a wide choice of shops and amenities such as local bakers, convenience stores, pet shop, hairdressers, vets, cafes and restaurants to name a few. The community sports centre is again within walking distance offering a range of clubs and activities and a diving school in nearby Holborough Lakes.

For those who like shopping Bluewater is just over 20 minutes via car, whilst both the historic towns of West Malling and Rochester can be reached within 15 minutes by car, providing the services you would expect from significant towns as well as offering several restaurants, pubs and places of

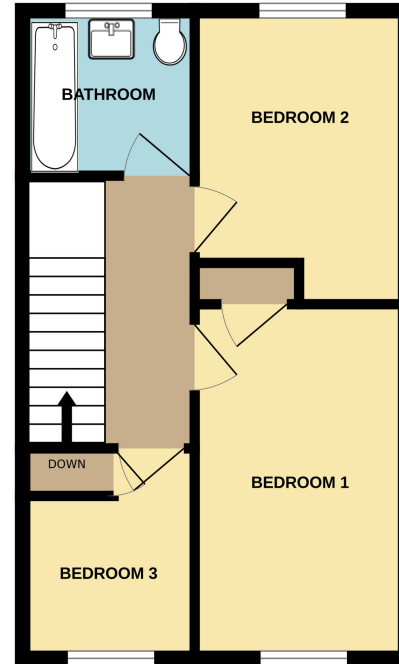


Address: 26 Freelands Road, ME6

GROUND FLOOR



1ST FLOOR



Whilst every attempt has been made to ensure the accuracy of the floorplan contained here, measurements of doors, windows, rooms and any other items are approximate and no responsibility is taken for any error, omission or mis-statement. This plan is for illustrative purposes only and should be used as such by any prospective purchaser. The services, systems and appliances shown have not been tested and no guarantee as to their operability or efficiency can be given.  
Made with Metropix ©2024