



Guide price £190,000
Poynder Drive, ME6



 1
Bedroom

 1
Bathroom

48 Holborough road Snodland Kent ME65PB |
sales@cwproperty.co.uk

01634 304 326

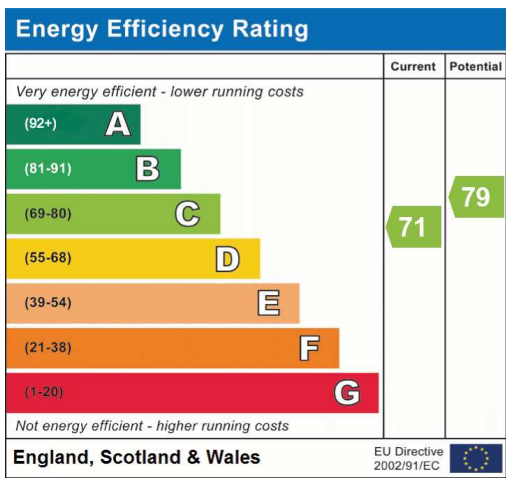


Welcome to Poynder Drive this large one Bedroom Ground Floor apartment in the sought after Holborough Lakes development is not to be missed!

As you step into this ground floor apartment and you will be greeted into the spacious hall, leading through to the living/dining room with feature porthole windows allowing the light to flood in. Cook up a storm in the modern kitchen overlooking one of the many green areas and the large bedroom is a perfect space to relax. The bathroom is a great size and outside you have your own allocated parking space.

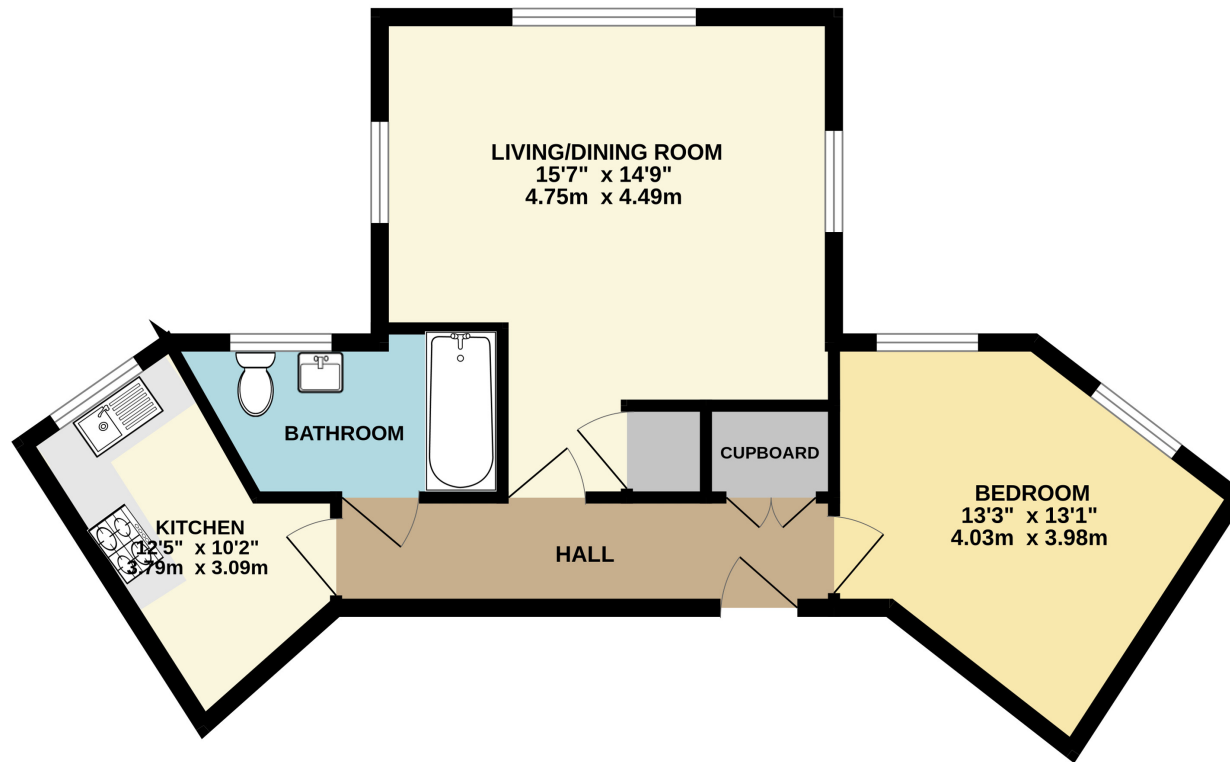
Holborough Lakes is an award winning thriving community on the edge of the Kent Downs with countryside walks on your doorstep and set amongst attractive landscaping with its own beautiful 8 acre freshwater lake with its own water sports and diving academy. The development has its own 'Good' ofsted rated primary school, a Creche, Village Hall and M&S Simply Food as well as being in the catchment area for a wide range of highly rated secondary schools all easily accessible with the transport links. For the more active there is an onsite resident gym, free to use to owners (subject to induction).

Being very well located for both the M20 and M2 for easy access to the M25. Rail connections are provided at the nearby Snodland railway station, which benefits from High Speed Commuter trains to St Pancreas inside 45 minutes (via Ebbsfleet and Stratford International). For those who like shopping, Bluewater is just over 20 minutes via car, whilst the historic towns of Rochester and Maidstone can be reached in around 15 minutes by car, both providing the services you would expect from significant towns.



Address: 28 Poynder Drive, ME6

GROUND FLOOR
490 sq.ft. (45.5 sq.m.) approx.



TOTAL FLOOR AREA : 490 sq.ft. (45.5 sq.m.) approx.

Whilst every attempt has been made to ensure the accuracy of the floorplan contained here, measurements of doors, windows, rooms and any other items are approximate and no responsibility is taken for any error, omission or mis-statement. This plan is for illustrative purposes only and should be used as such by any prospective purchaser. The services, systems and appliances shown have not been tested and no guarantee as to their operability or efficiency can be given.
Made with Metropix ©2024