

CWB

Property Sales, Lettings and
Management



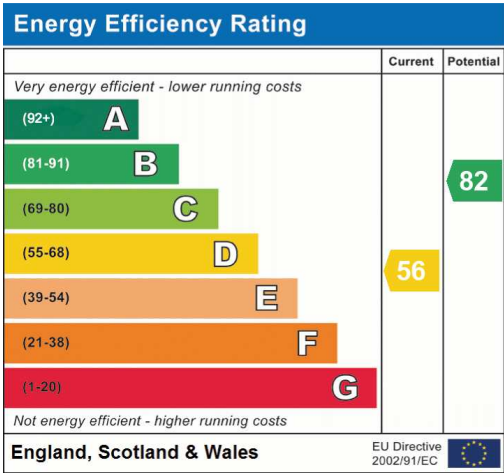
 2
Bedrooms

 2
Bathrooms



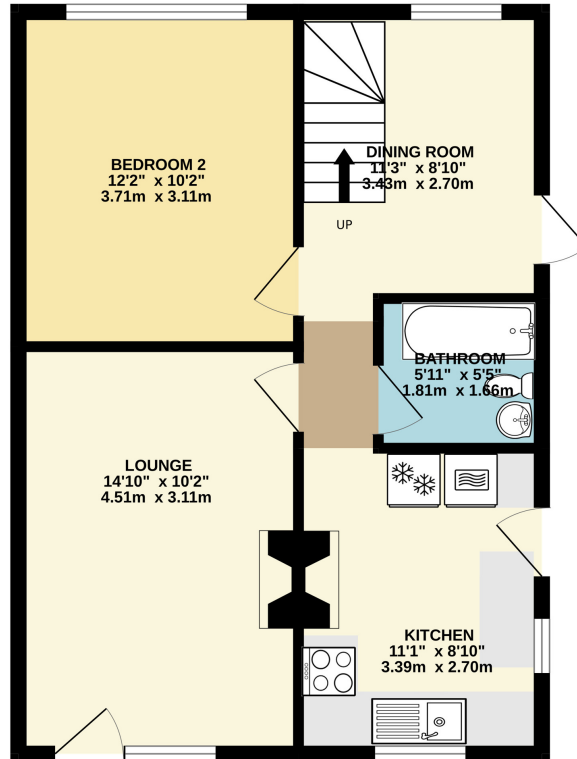
Set in a sought after area this 2 bedroom bungalow has plenty of scope to extend and improve, with its good size front and rear gardens, large driveway and garage, viewing is highly encouraged. Park at ease on the driveway and come on in! Currently laid out to include a large lounge with doors out to the rear garden, spacious modern fitted kitchen, dining area, bedroom and bathroom on the ground floor. Upstairs you will find the large master bedroom complete with ensuite shower room.

Allington, famous for its own medieval castle is a popular residential area with a mix of facilities and within close proximity to many local primary and secondary school. Located just north of Maidstone the county town of Kent known for its historical significance, with landmarks such as the Archbishops' Palace, Maidstone Museum, and the beautiful Leeds Castle located nearby. The River Medway flows through the town, adding to its picturesque setting. Perfectly located with easy access to the A20, M20 and Barming station.

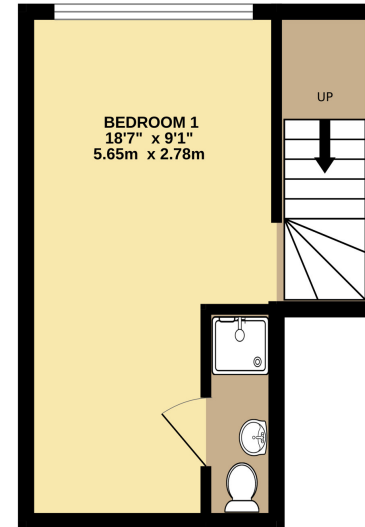


Address: Ernest Drive, Maidstone, Kent, ME16

GROUND FLOOR
505 sq.ft. (46.9 sq.m.) approx.



1ST FLOOR
208 sq.ft. (19.3 sq.m.) approx.



TOTAL FLOOR AREA : 713 sq.ft. (66.2 sq.m.) approx.

Whilst every attempt has been made to ensure the accuracy of the floorplan contained here, measurements of doors, windows, rooms and any other items are approximate and no responsibility is taken for any error, omission or mis-statement. This plan is for illustrative purposes only and should be used as such by any prospective purchaser. The services, systems and appliances shown have not been tested and no guarantee as to their operability or efficiency can be given.
Made with Metropix ©2024