



MICHAEL TUCK
ESTATE & LETTING AGENTS



Flat 3, Fitzalan House Park Road, Gloucester

Gloucester

£125,000

Flat 3

Fitzalan House Park Road, Gloucester

We are delighted to bring to the market a GROUND FLOOR Apartment located in Gloucester Town Centre within walking distance of a range of local amenities including Bus and Train station, Supermarket and Gloucester's Historic Docks. Accommodation comprises of Entrance Hall, 20' Open Plan Lounge Diner/Kitchen, 18' DOUBLE Bedroom and Family Bathroom.

Further benefits include Double Glazing and Gas Radiator Central Heating.

Call 01452 543200 To View

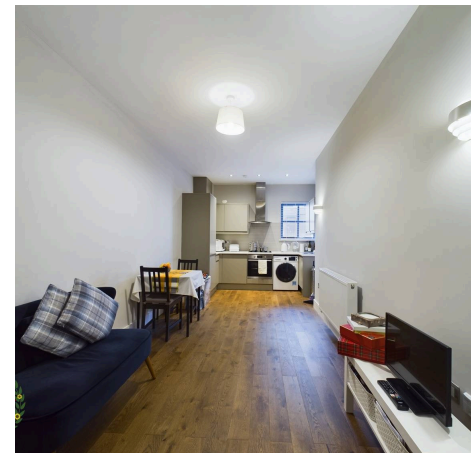
Council Tax band: TBD

Tenure: Leasehold

EPC Energy Efficiency Rating: C

EPC Environmental Impact Rating: C

- Ground Floor Apartment
- 18'3 Double Bedroom
- 20' Open Plan Lounge/Diner and Kitchen
- Family Bathroom
- Gas Radiator Central Heating
- Double Glazing
- Well Maintained Throughout
- Energy Rating C77



Entrance Hall

Open Plan Lounge/Diner & Kitchen

Dimensions: 20' 6" x 8' 8" (6.24m x 2.64m).

Double Bedroom

Dimensions: 18' 3" x 8' 6" (5.56m x 2.59m).

Family Bathroom

Dimensions: 7' 10" x 5' 6" (2.39m x 1.68m).

Tenure - Leasehold

Expiry Date of Lease: 24-12-2143 Ground Rent: £100 Per

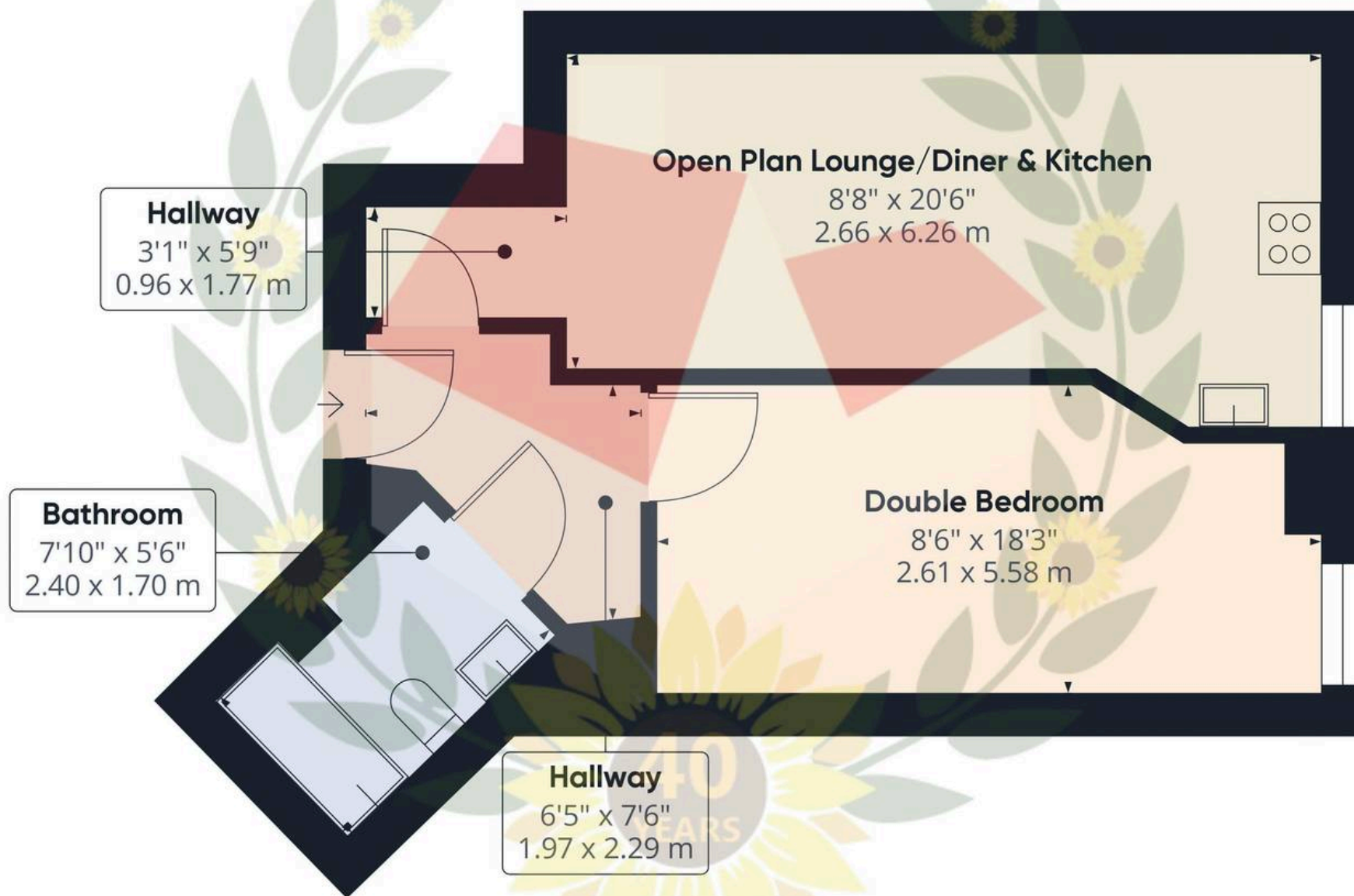
Annum Service Charge: Jan-December 2025 £1345.73

Includes: Communal, Gutter and window cleaning, hygiene services, gate and parking access maintenance, lift maintenance electricity to communal areas, plumbing, heating and drains maintenance, management fees, out of hours service, fire and safety inspections, buildings insurance, engineering insurance and reserve fund

Additional Information

Gas & Electric - Mains Water & Sewerage - Mains





Approximate total area⁽¹⁾

432.49 ft²

40.18 m²

(1) Excluding balconies and terraces

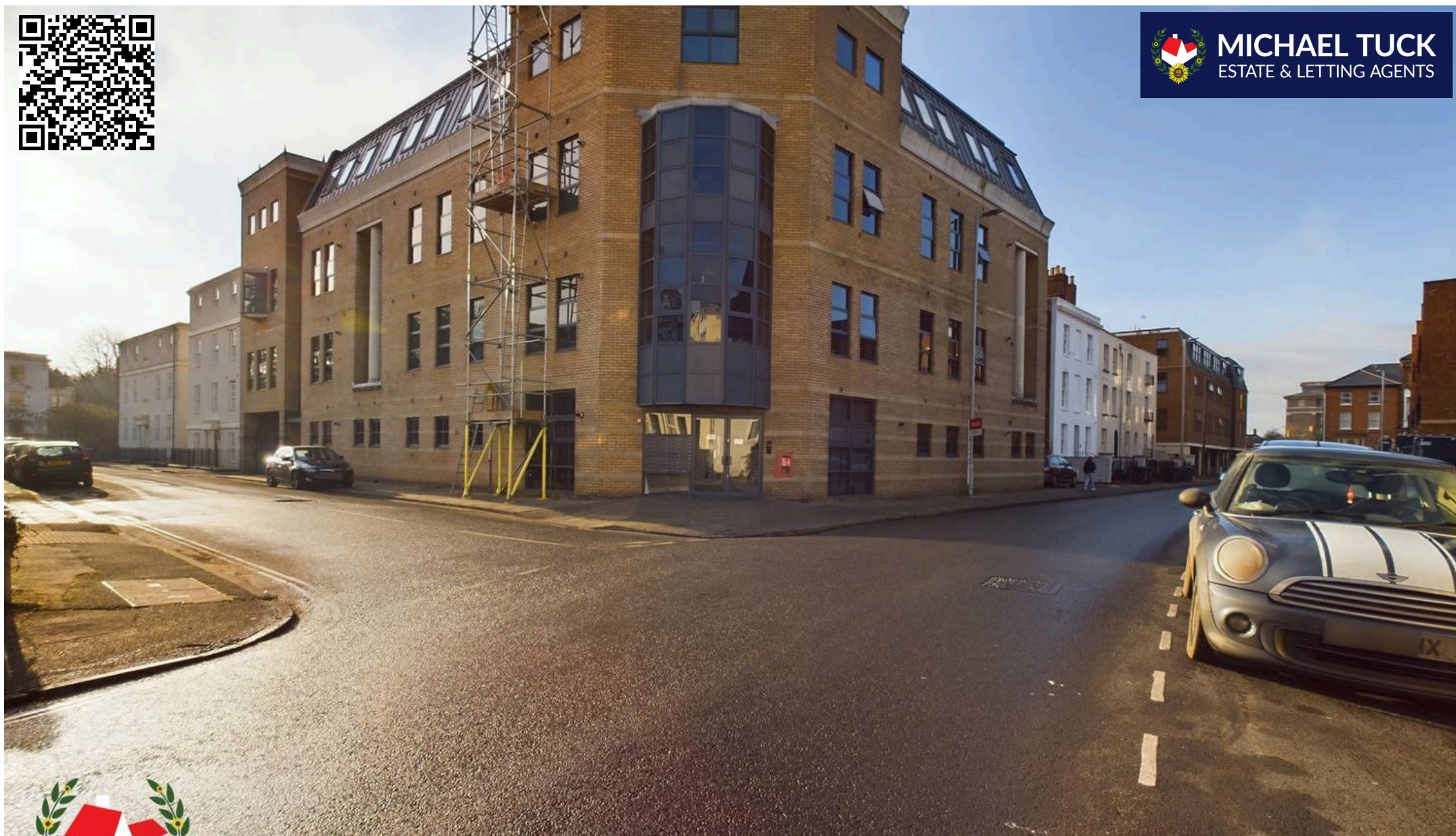
While every attempt has been made to ensure accuracy, all measurements are approximate, not to scale. This floor plan is for illustrative purposes only.

Calculations are based on RICS IPMS 3C standard.

GIRAFFE360



MICHAEL TUCK
ESTATE & LETTING AGENTS



Michael Tuck Quedgeley

1 School Lane, Quedgeley - GL2 4PJ

01452 543200 • estates.quedgeley@michaeltuck.co.uk • www.michaeltuck.co.uk/



Important notice: Michael Tuck, its clients and any joints give notice that 1: They are not authorised to make or give any representations or warranties in relation to the property either here or elsewhere, either on their own behalf of their client or otherwise. They assume no responsibility for any statement that may be made in these particulars. These particulars do not form part of any offer or contract and must not be relied upon as statements or representation of fact. 2: Any areas, measurements or distances are approximate. The text, photographs and plans are for guidance only and are not necessarily comprehensive. It should not be assumed that the property has all necessary planning, building regulation or other consents and Michael Tuck have not tested any services, equipment or facilities. Purchasers must satisfy themselves by inspection or otherwise.