



Goss Wood Corner, Quedgeley, Gloucester

£360,000 Freehold



MICHAEL TUCK

The Agent with 5 star customer service

**17 Goss Wood Corner, Quedgeley,
Gloucester, Gloucestershire, GL2 4WS**

£360,000

Freehold. Council Tax Band D



4 Bedrooms



2 Bathrooms



3 Receptions

Features

- *Upvc Double Glazing
- * Highly Sought After
- *Three Reception Rooms
- *Corner Plot
- *Rarely Available
- * No Onward Chain
- *Gas Central Heating
- * Energy Rating E

Michael Tuck Estate and Letting Agents

1 School Lane Quedgeley Gloucester Gloucestershire GL2 4PJ

01452 543200

estates.quedgeley@michaeltuck.co.uk

www.michaeltuck.co.uk

The Property

FOUR DOUBLE BEDROOM DETACHED HOME
LOCATED IN THE CORNER OF A VERY POPULAR
CUL-DE-SAC IN QUEDGELEY!

In brief the accommodation on the ground floor
comprises of: Entrance hall, W.C, spacious living
room, kitchen/diner and a study/hobby room.

On the top floor we have: Four double
bedrooms & a family bathroom.

Further benefits are; gas central heating, upvc
double glazing, parking for multiple vehicles, en-
suite to bedroom one and a private enclosed
rear garden!

This property is in need of updating and has
massive potential so if you're after a property
you can put your own stamp on then this is the
one for you!

Property for sale through Michael Tuck Estate
Agents. Approximate rental value of £1600-
1700pcm, please contact Michael Tuck Lettings
in Quedgeley for more details. Call us today to
arrange your viewing on 01452 543200!

Entrance Hall

Cloakroom

Living Room 17' 3" x 15' 3" (5.25m x 4.64m)

Kitchen/Diner 17' 3" x 9' 4" (5.25m x 2.84m)

Study/Hobby Room 15' 9" x 9' 1" (4.80m x
2.77m)

Landing

Bedroom 1 12' 1" x 9' 4" (3.68m x 2.84m)

En-suite 8' 10" x 3' 9" (2.69m x 1.14m)

Bedroom 2 11' 1" x 9' 5" (3.38m x 2.87m)

Bedroom 3 9' 4" x 9' 0" (2.84m x 2.74m)

Bedroom 4 11' 11" x 7' 8" (3.63m x 2.34m)

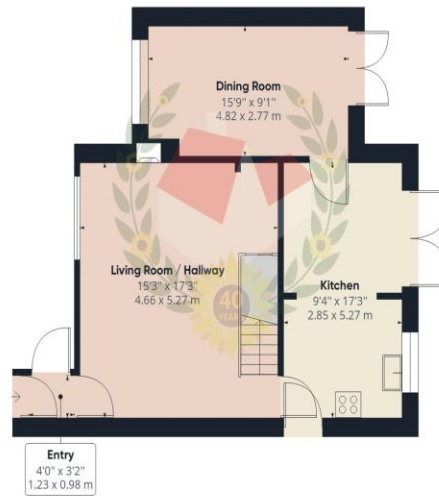
Bathroom 6' 6" x 6' 1" (1.98m x 1.85m)

Rear Garden

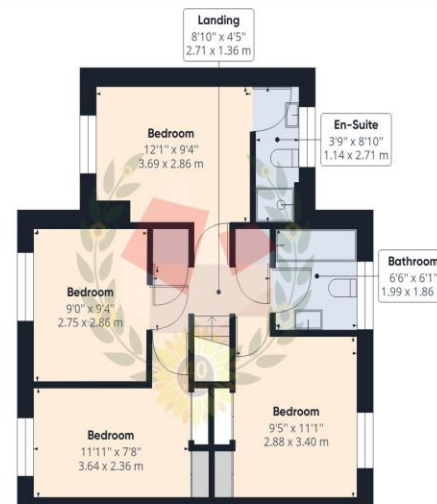








Ground Floor



FOR ILLUSTRATIVE PURPOSES ONLY – NOT TO SCALE

The position and size of doors, windows, appliances, and other features are approximate only.
Unauthorised reproduction prohibited

Approximate total area⁽¹⁾

1143.76 ft²
106.26 m²

(1) Excluding balconies and terraces

While every attempt has been made to ensure accuracy, all measurements are approximate, not to scale. This floor plan is for illustrative purposes only.

GIRAFFE360

Important notice: Michael Tuck, its clients and any joints give notice that 1: They are not authorised to make or give any representations or warranties in relation to the property either here or elsewhere, either on their own behalf of their client or otherwise. They assume no responsibility for any statement that may be made in these particulars. These particulars do not form part of any offer or contract and must not be relied upon as statements or representation of fact. 2: Any areas, measurements or distances are approximate. The text, photographs and plans are for guidance only and are not necessarily comprehensive. It should not be assumed that the property has all necessary planning, building regulation or other consents and Michael Tuck have not tested any services, equipment or facilities. Purchasers must satisfy themselves by inspection or otherwise.

