



## Sheffield Road, Oxspring, Sheffield, S36 8YW

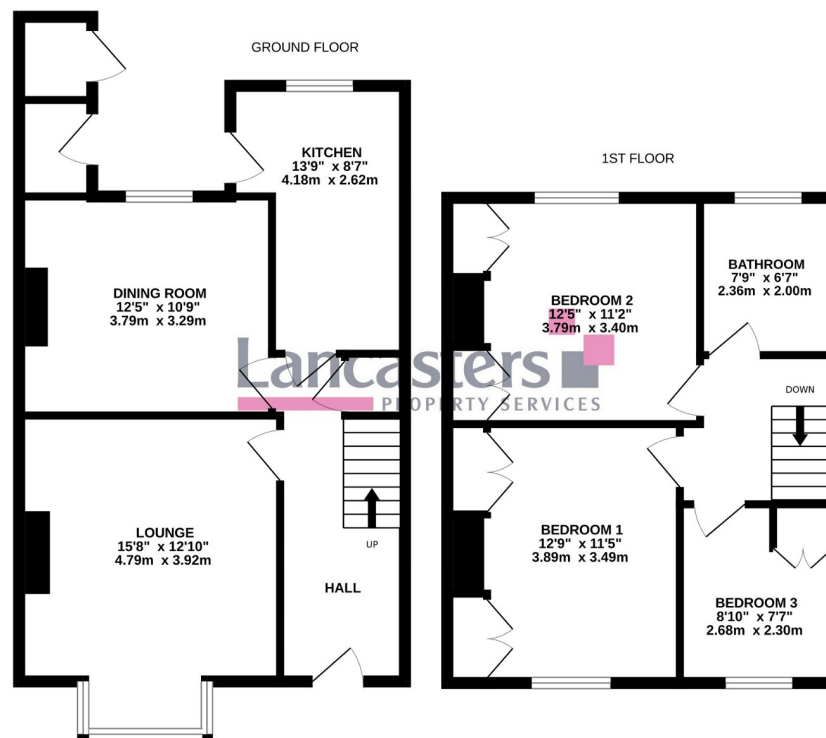
£285,000

 3  1  2



A stone fronted 3 bedroom semi detached house occupying a generous plot, enjoying south facing gardens, stunning cross valley views and a sought after position within a beautiful village on the outskirts of open countryside.

- GENEROUS PLOT
- SOUTH FACING GARDENS
- 3 BEDROOMS
- STUNNING VIEWS
- OFF ROAD PARKING
- LOCAL SERVICES & FACILITIES
- OPEN COUNTRYSIDE & THE TRANS PENNINE TRAIL
- M1 ACCESS
- HIGHLY REGARDED SCHOOLS
- LOUNGE, DINING ROOM & KITCHEN



Whilst every attempt has been made to ensure the accuracy of the floorplan contained here, measurements of doors, windows, rooms and any other items are approximate and no responsibility is taken for any error, omission or mis-statement. This plan is for illustrative purposes only and should be used as such by any prospective purchaser. The services, systems and appliances shown have not been tested and no guarantee as to their operability or efficiency can be given.  
Made with Metropix ©2023