



Weetshaw Close, Shafton, Barnsley, S72 8PZ

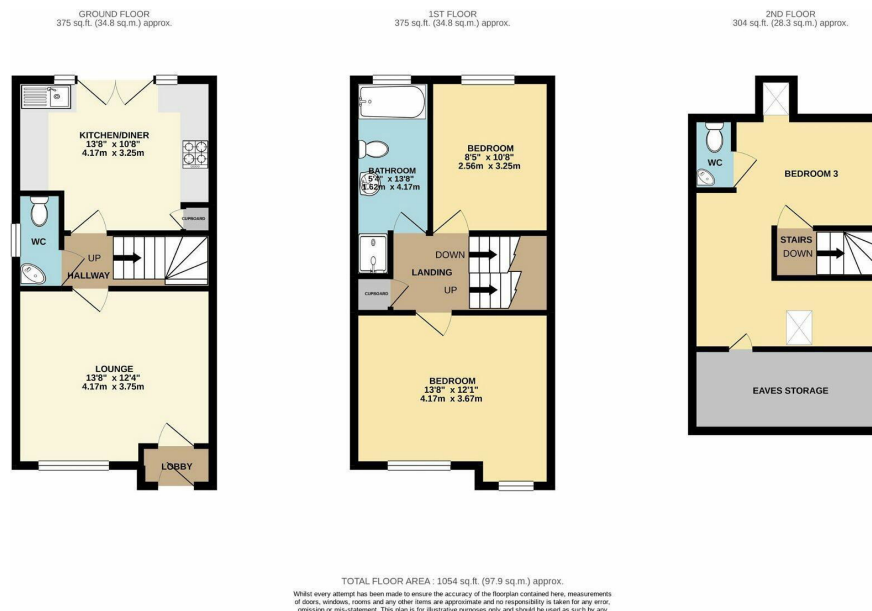
£169,950

3 2 1

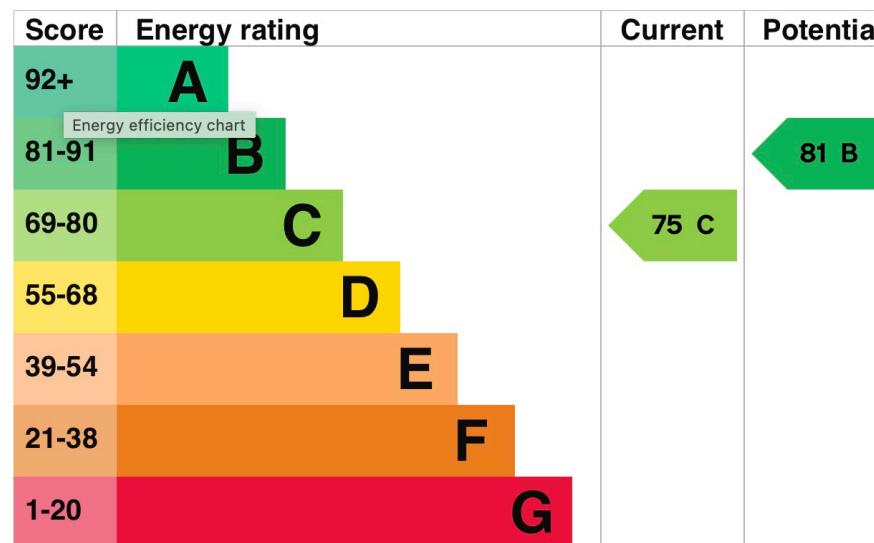


- 3 Bed Town House
- Off Rod Parking
- South Facing Garden
- Local Services & Amenities
- Sought After Position
- Exceptionally Well Presented Throughout
- Living Kitchen
- Family Bathroom & En-Suite
- Dearne Valley Road Link & M1 Access
- No Through Road Location





A three bedroom town house, exceptionally well presented throughout, benefitting from off road parking, south facing gardens and a no-through road tucked away position, highly commutable and well served by local services.



Lancasters Property Services
Property Professionals For Over 230 Years
 Independent Estate Agents, Surveyors & Property Management
Email: mail@lancasters-property.co.uk
 In association with Lancasters Property Management Ltd.

Lancaster House, 20 Market St.
Penistone S36 6BZ
 Tel: (01226) 763307