



Waters Edge, Langsett, Sheffield, S36 4GY

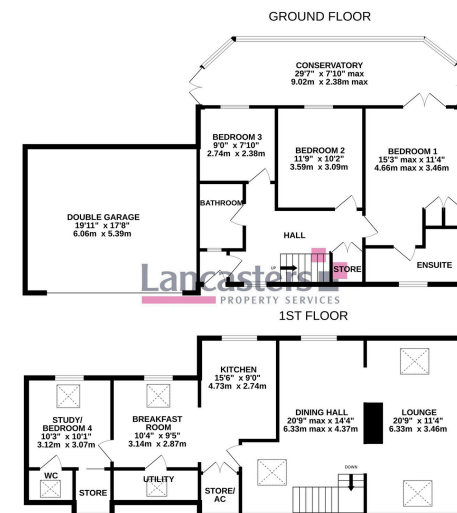
£575,000

4 3 2

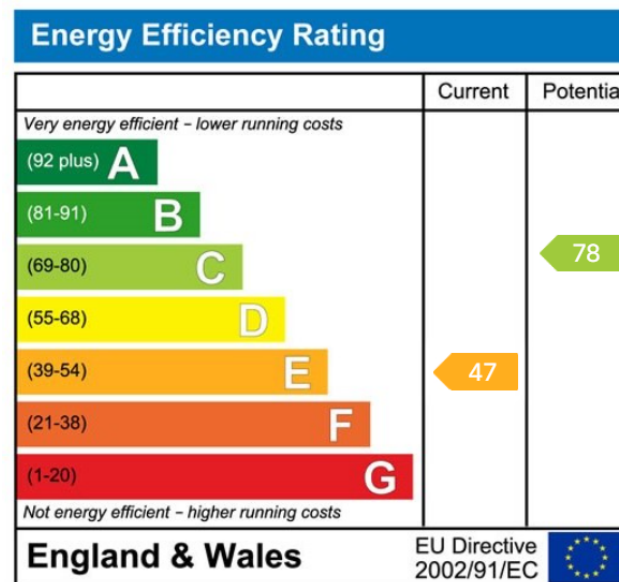


- Sympathetically Developed Character Home
- 4 Bedroom & 3 Bathrooms
- Double Garage
- Idyllic Peak District Location
- Local Services and Amenities
- Delightful Setting Overlooking Langsett Reservoir
- 2 x Reception Rooms & A Living Kitchen
- Landscaped Low Maintenance Gardens
- Amazing Views
- No Upwards Chain





Enviably positioned on the outskirts of the National Peak Park, occupying a delightful setting, a stunning character home constructed in the late 1980's / early 1990's from reclaimed materials, sympathetically developed to form an amazing home which offers a wealth of charm and character throughout.



Lancasters Property Services
Property Professionals For Over 230 Years
 Independent Estate Agents, Surveyors & Property Management
Email: mail@lancasters-property.co.uk
 In association with Lancasters Property Management Ltd.



Lancaster House, 20 Market St.
Penistone S36 6BZ
 Tel: (01226) 763307