



t h e
m e s c a e x p e r i e n c e



SOMABAY

RESORT HOUSING

1. Mesca Residences
2. Baywest Residences
3. Blanca Residences
4. Baycentral
5. Marina Residences
6. Soma Breeze
7. Reef Villas
8. Reef Town
9. Golf Townhouses
10. Wadi Jebel
11. Wadi Soma
12. Sholan Residences
13. Coves Residences
14. Golf Course Residences
15. Future Residential Developments

HOTEL RESORTS

15. Mesca Hotel
16. Kempinski Hotel
17. Robinson Hotel
18. Sheraton Hotel
19. The Breakers
20. Cascades & Thalasso Center
21. The Village Hotel
22. SO INN Hotel
23. Glamping Hotel

OTHER

24. Somabay Entrance
25. Horse Stable
26. Mesca Beach Club
27. 7BFT (Kite Surfing Center)
28. S-Cape Beach
29. Marina
30. Casino
31. Kompass Kindergarden
32. Medical Center
33. Somabay Sales Office
34. Umm Gursan Island
35. Soma Splash Aqua Park
36. Orca Diving Center
37. Reef Island
38. Employee Housing
39. Mosque
40. Dog Sanctuary

GOLF FACILITIES

41. Golf Academy & Sports Club
42. Short Game Area
43. 360 Hub
44. Pro Shop



SOMABAY is a ten million square meter resort peninsula on Egypt's Red Sea coast, designed to celebrate the best elements of the sun and sea.

This self-contained resort paradise is encompassed by endless sandy beaches to the south and magical coral reefs to the north.

Somabay hosts a natural landscape accented by its diverse hotels, residential properties, golf course, thalasso spa, and water sports center. The peninsula is blessed with dry desert winds and low humidity. winters are temperate with daytime temperatures averaging into the low to mid 20 C while the summer averages 30 C.

Somabay is just four hours away from central europe and a short drive from hurghada international airport, furthermore, the ancient sites of Luxor and the Nile valley are a convenient two hour drive.

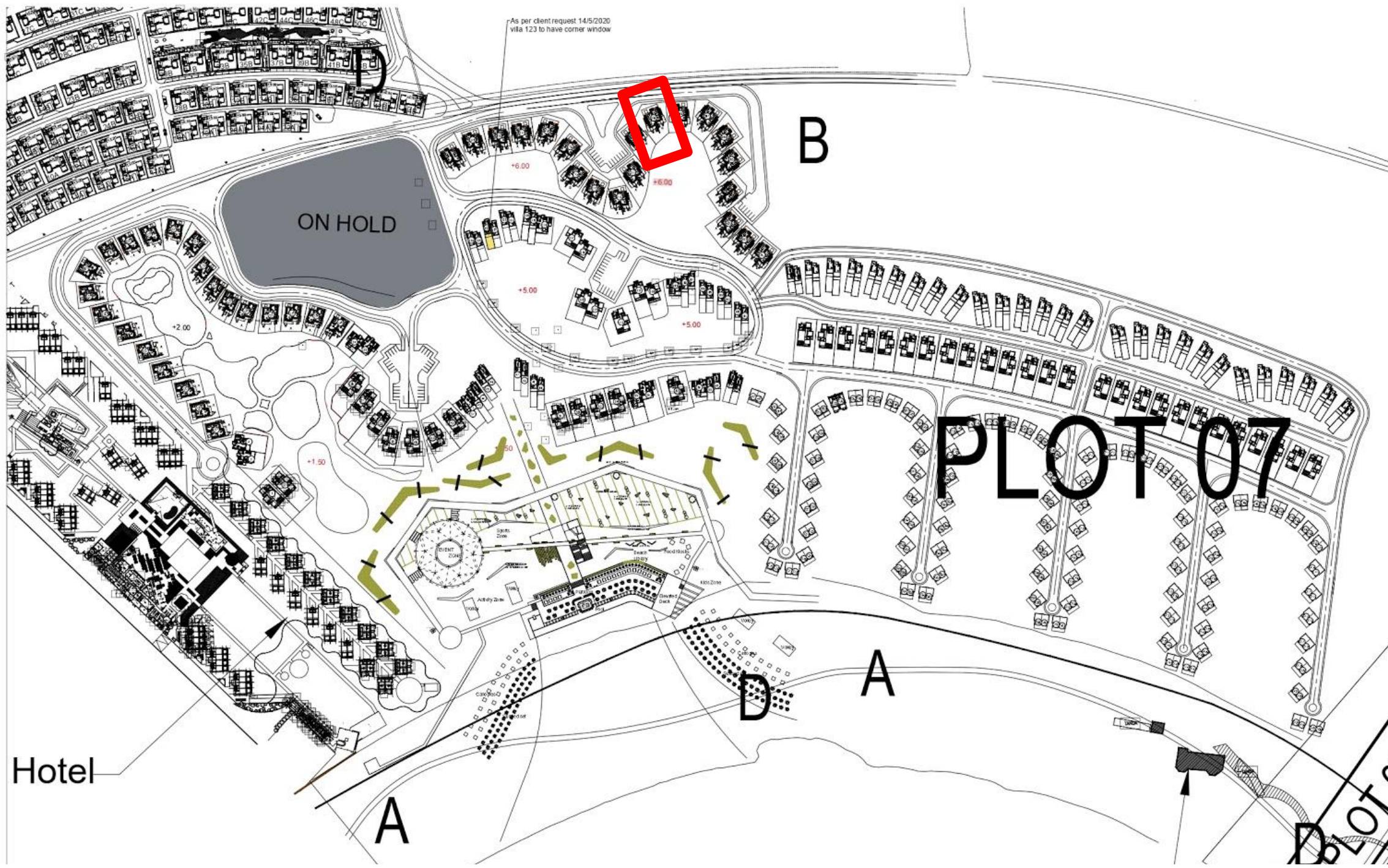


SOMABAY
OUTSTANDING BY NATURE

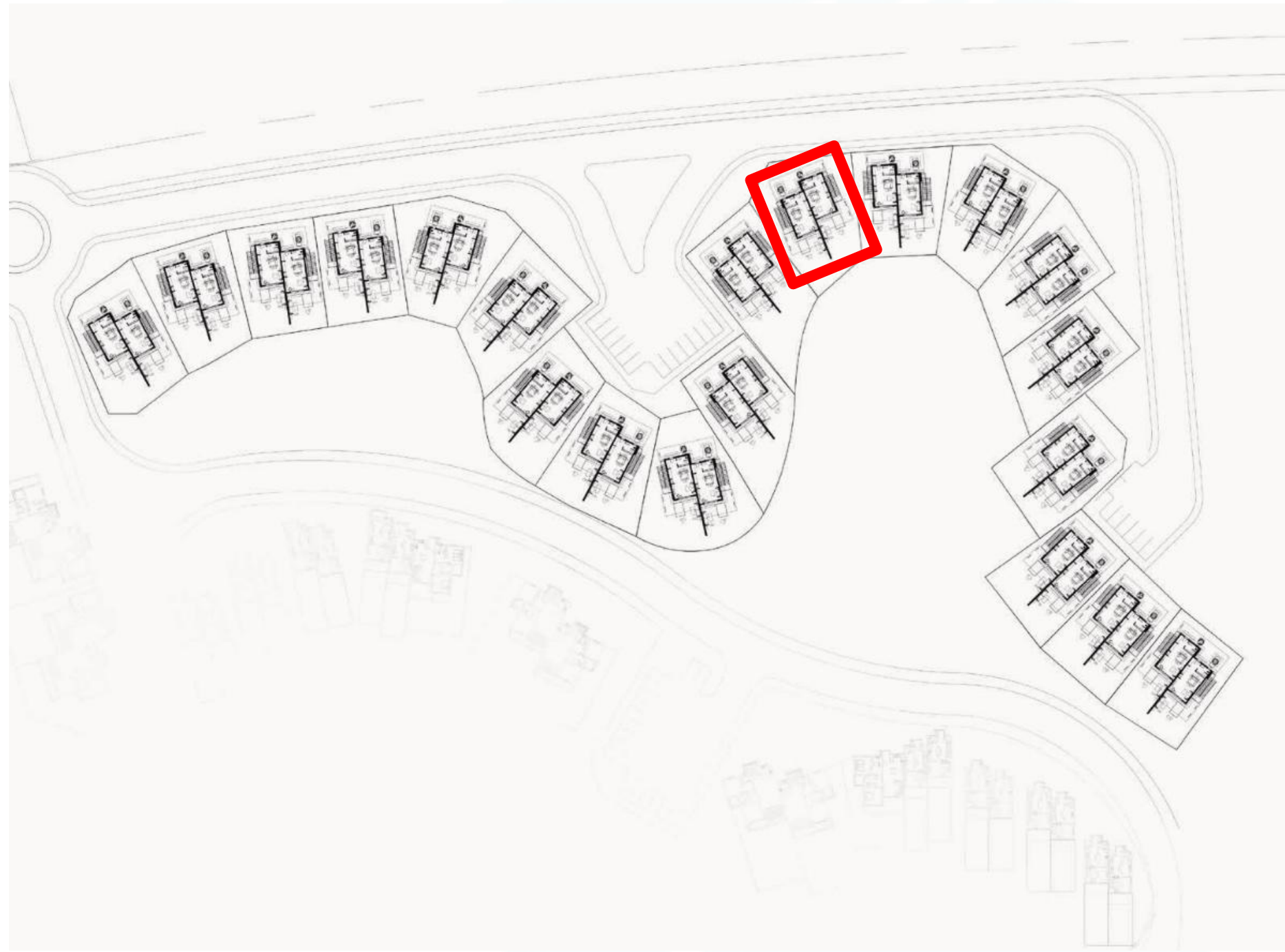
Mesca Penthouse 309C



- ❖ 1 bedroom with 113sqm
- ❖ Sea View
- ❖ Fully finished with ACs & water heaters
- ❖ Expected delivery date December 2024
- ❖ Total price **EUR 220'000**



Mesca Chalets Masterplan



GROSS AREA

113.00 SQM

TOTAL INDOOR

58.00 SQM

TERRACE

48.00 SQM

LIVING AREA

5.00 X 3.00 SQM

BEDROOM

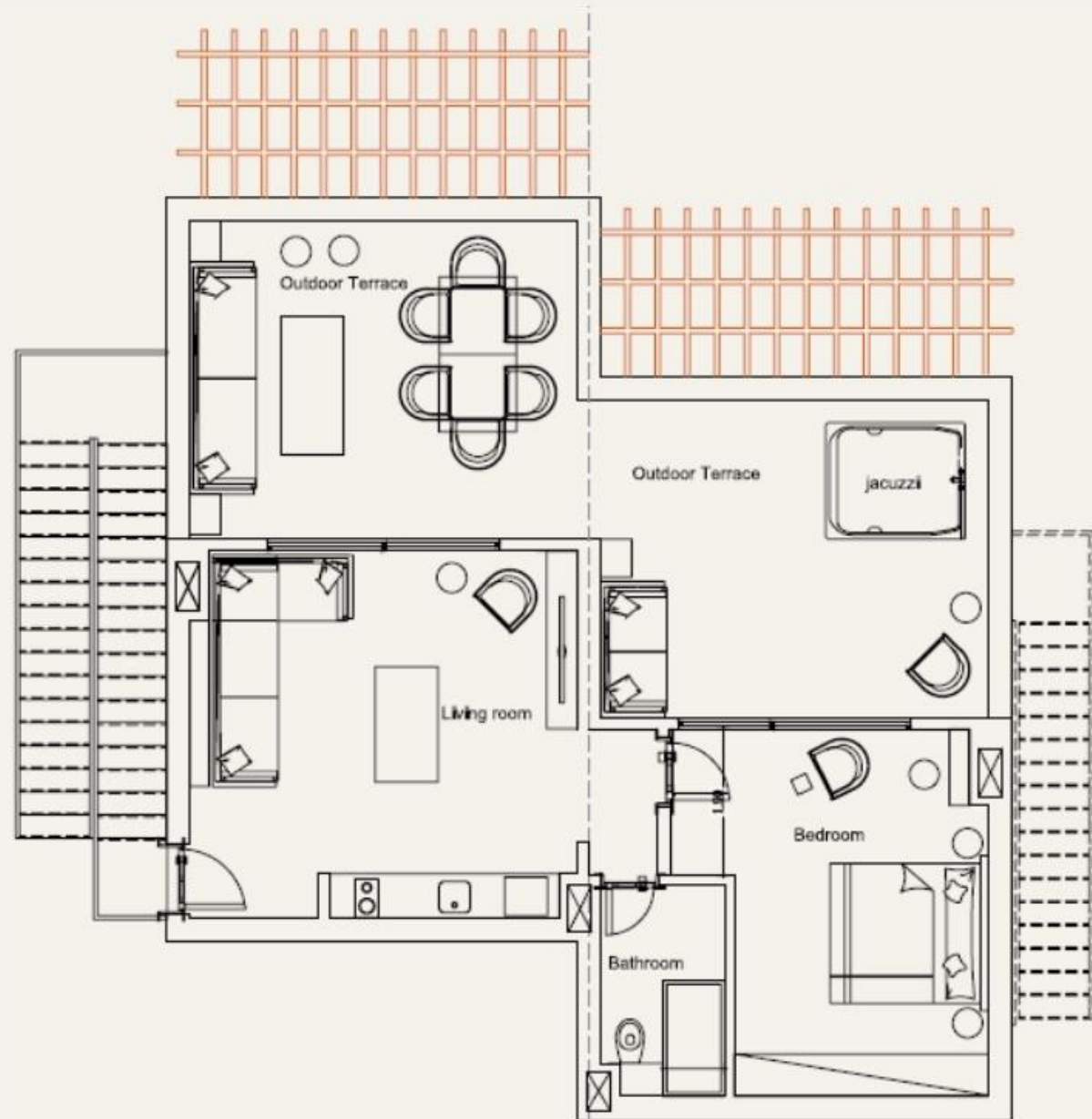
4.75 X 4.10 SQM

KITCHEN

3.00 X 1.75 SQM

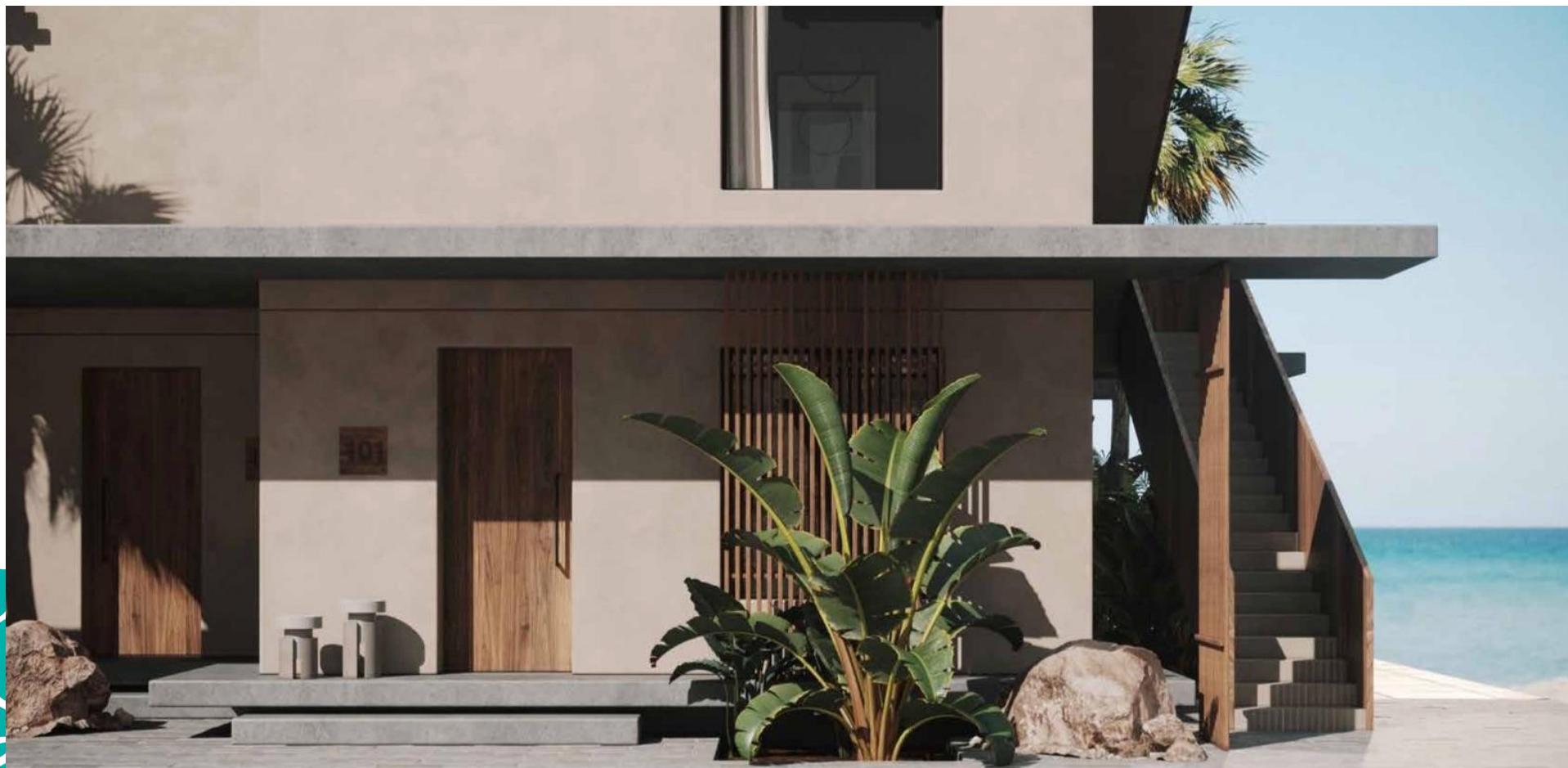
BATHROOM

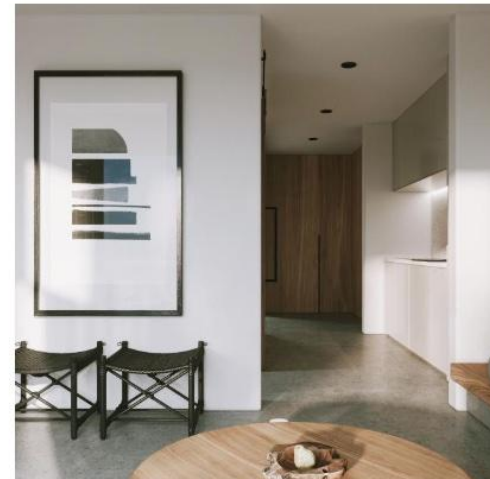
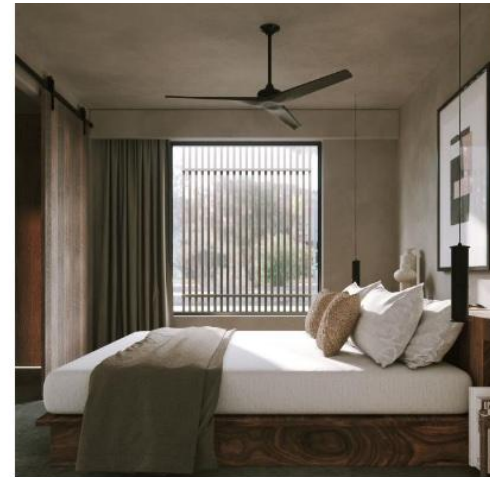
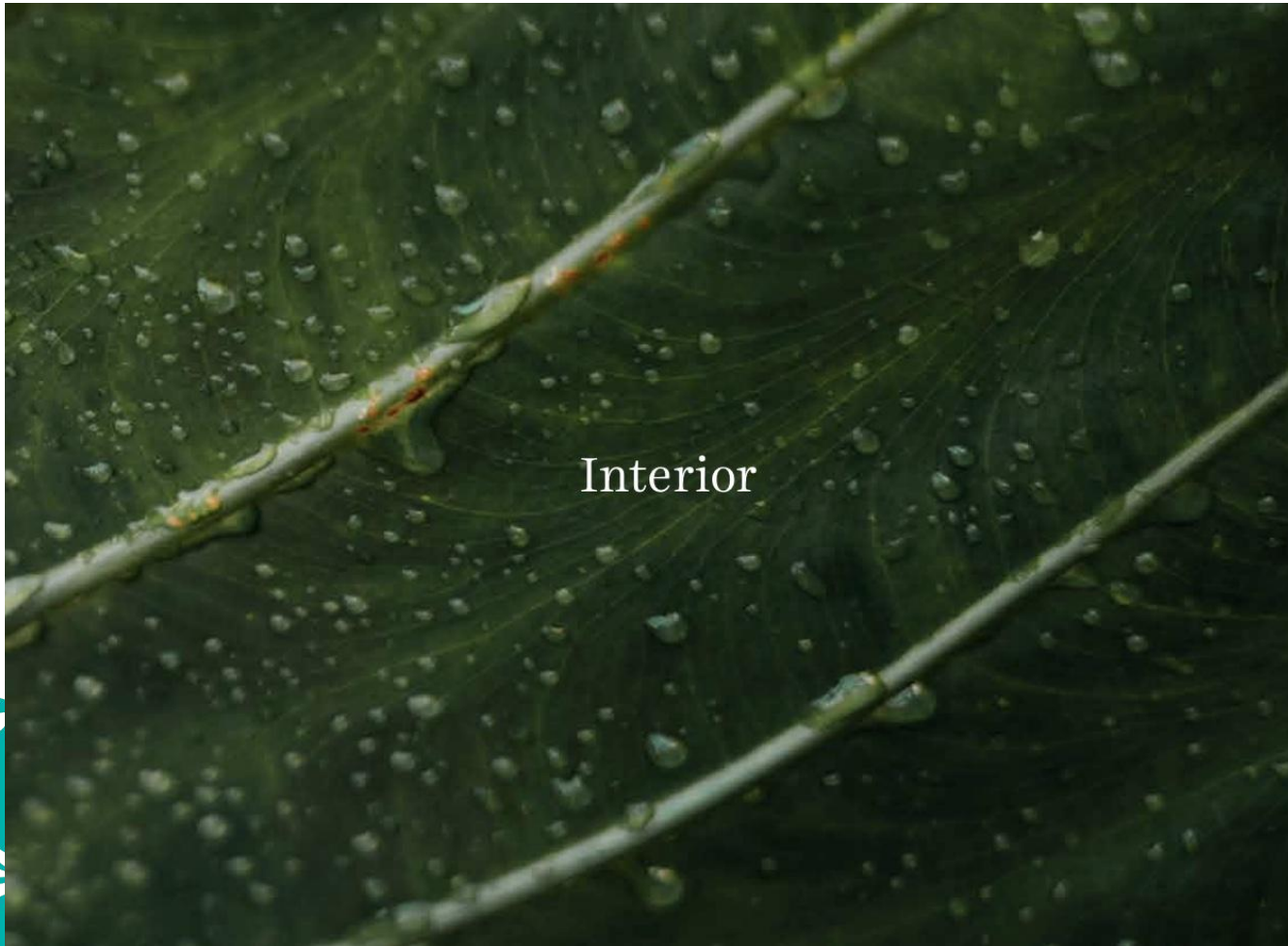
2.72 X 1.60 SQM

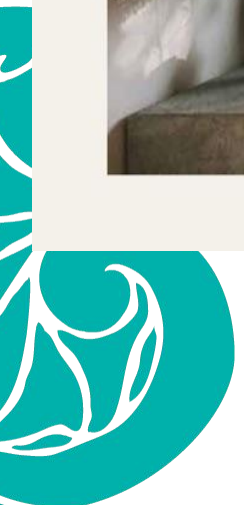




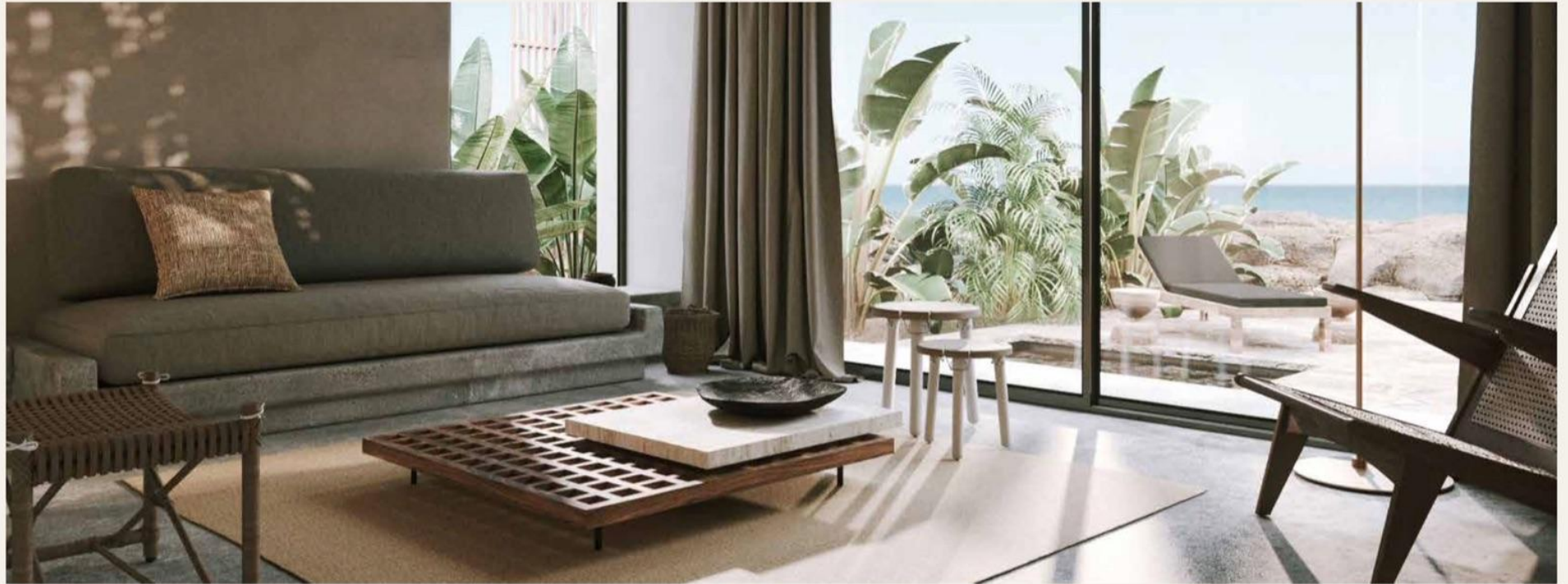




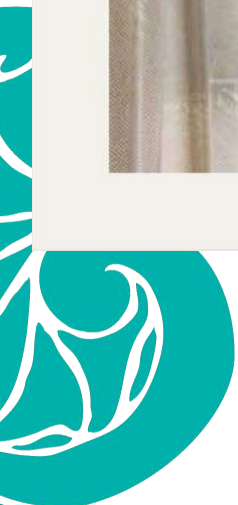




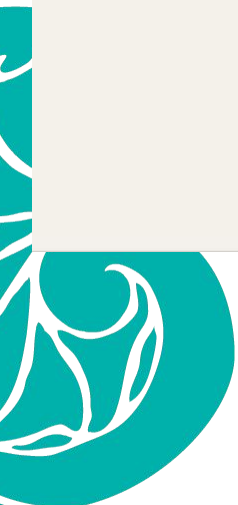
DISCLAIMER 1. Drawings are not to scale. 2. The architectural details, dimensions and area in this plan are based on Schematic Design information only, and final As-Built conditions may vary. 3. All units in this brochure are sold as unfurnished apartments, without furniture and furnishings, without white goods provisions, etc. 4. All images used in this brochure are for illustrative purposes only and do not represent the actual size, features, specifications, fittings, and furnishings. 5. Somabay reserves the right to make revisions/alterations, at its absolute discretion, and without liability.



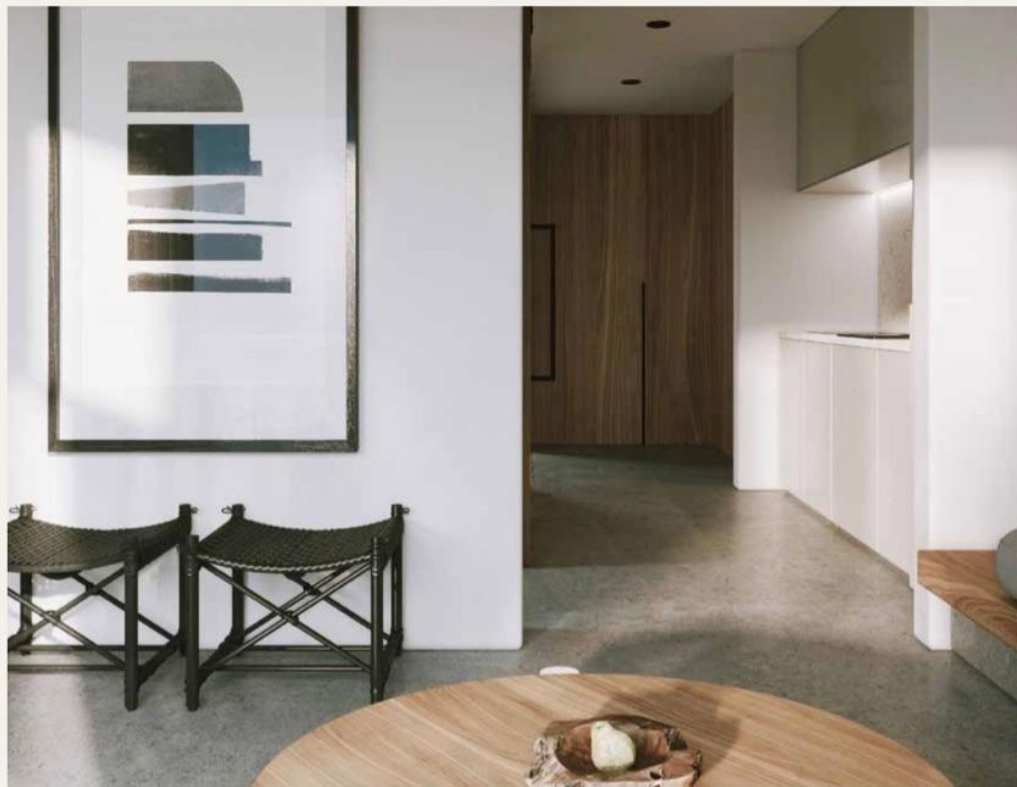
DISCLAIMER 1.Drawings are not to scale. 2.The architectural details, dimensions and area in this plan are based on Schematic Design information only, and final As-Built conditions may vary. 3.All units in this brochure are sold as unfurnished apartments, without furniture and furnishings, without white goods provisions, etc. 4.All images used in this brochure are for illustrative purposes only and do not represent the actual size, features, specifications, fittings, and furnishings. 5.Somabay reserves the right to make revisions/alterations, at its absolute discretion, and without liability.



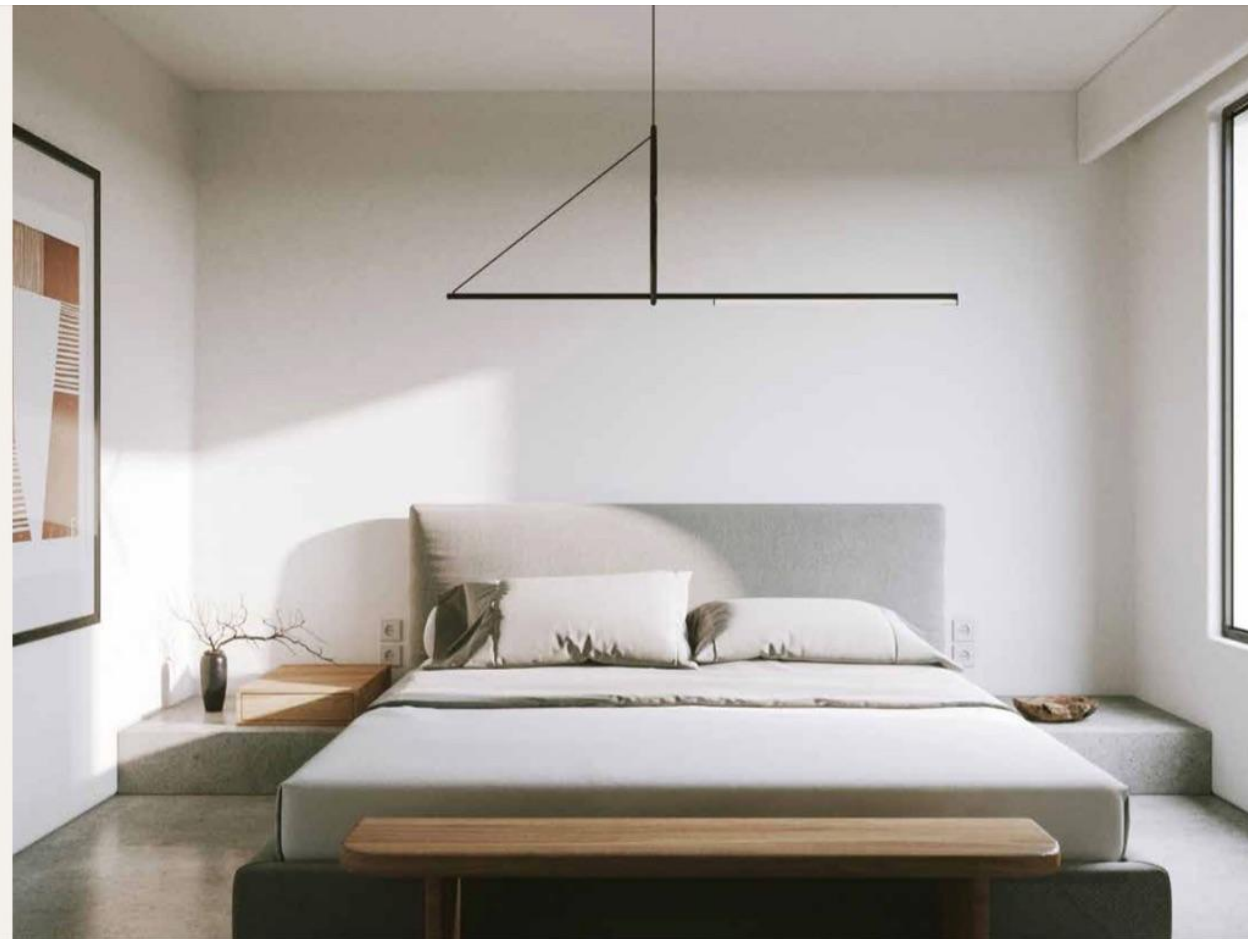
DISCLAIMER 1. Drawings are not to scale. 2. The architectural details, dimensions and area in this plan are based on Schematic Design information only, and final As-Built conditions may vary. 3. All units in this brochure are sold as unfurnished apartments, without furniture and furnishings, without white goods provisions, etc. 4. All images used in this brochure are for illustrative purposes only and do not represent the actual size, features, specifications, fittings, and furnishings. 5. Somabay reserves the right to make revisions/alterations, at its absolute discretion, and without liability.



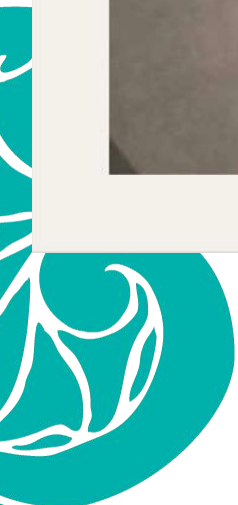
DISCLAIMER: 1. Drawings are not to scale. 2. The architectural details, dimensions and area in this plan are based on Schematic Design information only and final As-Built conditions may vary. 3. All units in this brochure are sold as unfurnished apartments, without furniture and furnishings, without white goods provisions, etc. 4. All images used in this brochure are for illustrative purposes only and do not represent the actual size, features, specifications, fittings and furnishings. 5. Somabay reserves the right to make revisions/alterations, at its absolute discretion, and without liability.



Page | 34



DISCLAIMER 1. Drawings are not to scale. 2. The architectural details, dimensions and area in this plan are based on Schematic Design information only, and final As-Built conditions may vary. 3. All units in this brochure are sold as unfurnished apartments, without furniture and furnishings, without white goods provisions, etc. 4. All images used in this brochure are for illustrative purposes only and do not represent the actual size, features, specifications, fittings, and furnishings. 5. Somabay reserves the right to make revisions/alterations, at its absolute discretion, and without liability.



MESCA Beach







MESCA

