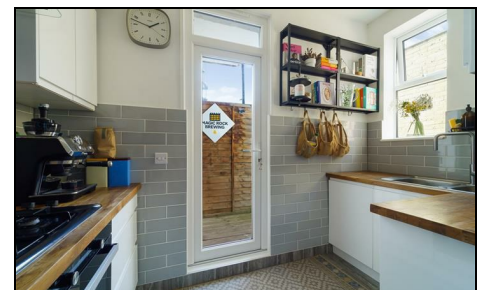


**Fortescue Road
Colliers Wood, SW19 2EB**

£2,150 Per Month

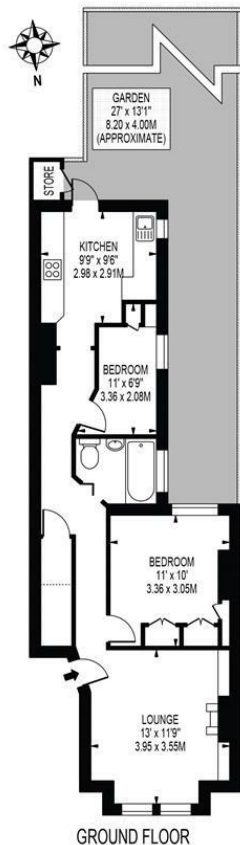


****AVAILABLE August 1st 2025**** A beautifully presented two double bedroom period ground floor flat with its own private garden, located on a sought after road close to Tube Station and amenities. Comprising of a good sized separate living room, two double bedrooms, lovely modern bathroom and a modern newly fitted kitchen with direct access to the private south facing rear garden. Properties of this quality are rare to the market so early viewings are highly recommended and is offered fully furnished.

**FORTESCUE ROAD,
COLLIERS WOOD**

APPROXIMATE GROSS INTERNAL FLOOR AREA: 580 SQ FT - 53.88 SQ M
(INCLUDING RESTRICTED HEIGHT AREA & EXCLUDING STORE)

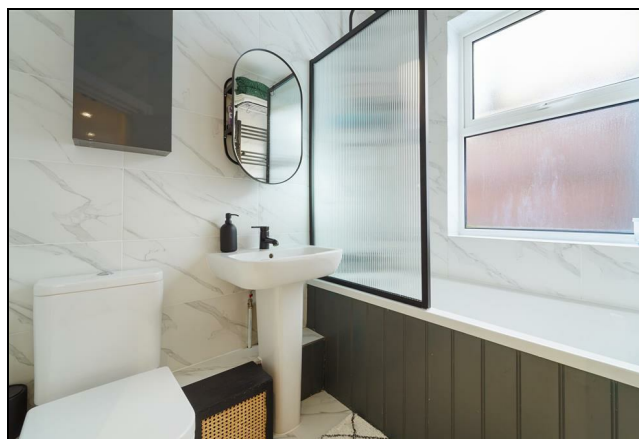
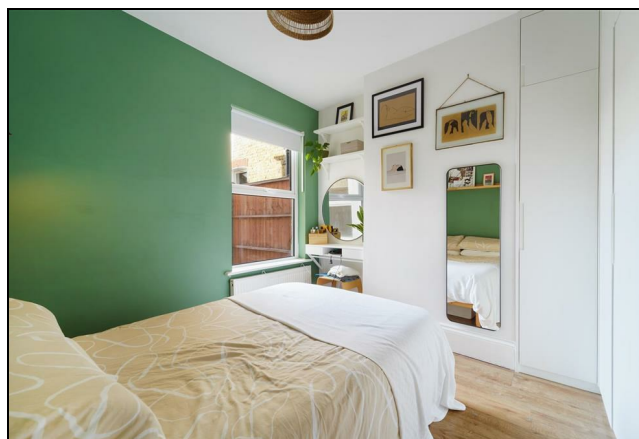
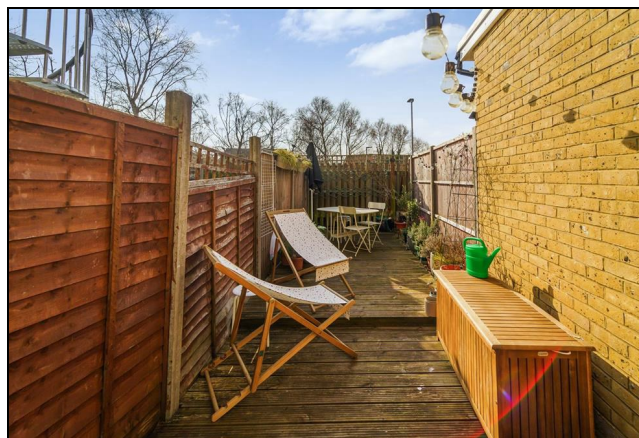
APPROXIMATE GROSS INTERNAL FLOOR AREA OF RESTRICTED HEIGHT: 14 SQ FT - 1.28 SQ M



GROUND FLOOR
FOR ILLUSTRATION PURPOSES ONLY

THIS FLOOR PLAN SHOULD BE USED AS A GENERAL OUTLINE FOR GUIDANCE ONLY AND DOES NOT CONSTITUTE IN WHOLE OR IN PART AN OFFER OR CONTRACT. ANY INTENDING PURCHASER OR LESSEE SHOULD SATISFY THEMSELVES BY INSPECTION, SEARCHES, ENQUIRIES AND FULL SURVEY AS TO THE CORRECTNESS OF EACH STATEMENT. ANY AREAS, MEASUREMENTS OR DISTANCES QUOTED ARE APPROXIMATE AND SHOULD NOT BE USED TO VALUE A PROPERTY OR BE THE BASIS OF ANY SALE OR LET.

- Two Bedrooms
- Private Garden
- Close To Tube Station
- Fully Furnished
- Available 1st August 2025
- First months rent in advance
- Damages deposit = five weeks deposit
- Fee of Intent = one weeks rent
- EPC Rating : C
- Merton Council Tax Band : C



Energy Efficiency Rating		
	Current	Potential
Very energy efficient - lower running costs		
(92 plus) A		
(81-91) B		
(69-80) C	69	78
(55-68) D		
(39-54) E		
(21-38) F		
(1-20) G		
Not energy efficient - higher running costs		
England & Wales		EU Directive 2002/91/EC

For Free Mortgage Quote and Best Mortgage Rates, call an Ellisons Mortgage Advisor on 020 8544 0518



Although these particulars are believed to be correct, their accuracy is not guaranteed and they do not form part of any contract.

**Celebrating 30 years
of successful Sales and
Lettings in Merton**

