

**Laburnum Road
Wimbledon, SW19 1BH**

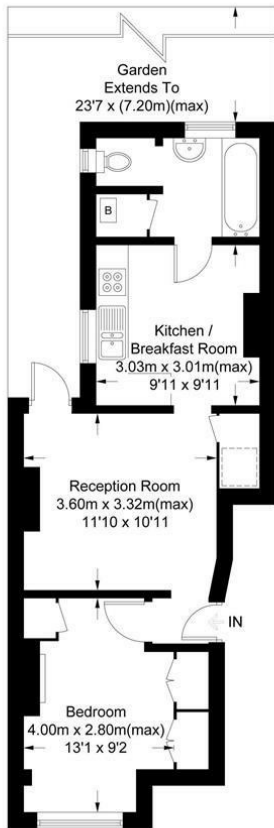
£1,750 Per Month



****AVAILABLE 11th NOVEMBER 2024**** A one double bedroom period conversion flat with private garden, located close to South Wimbledon and Colliers Wood tube stations. The property is very well presented, and would be ideal for a professional couple looking for commuter links into the City. Offered Furnished.

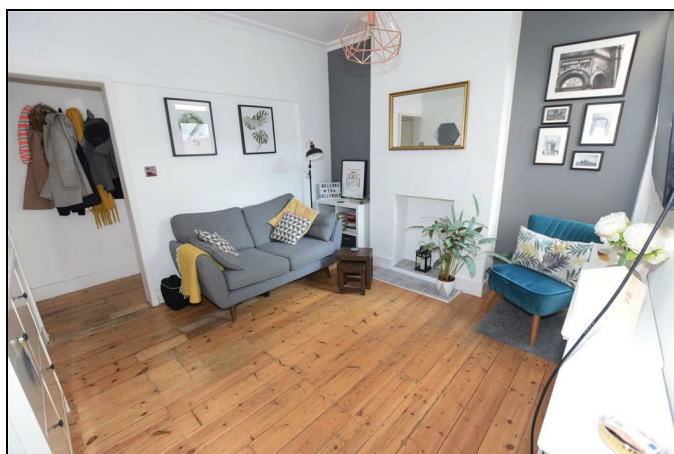
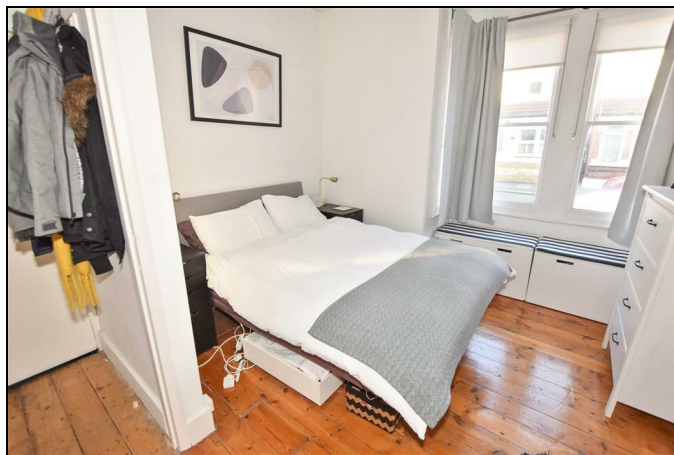
Laburnum Road, SW19

Approximate Gross Internal Area = 42.1 sq m / 453 sq ft



This floor plan is for representation purposes only and is not drawn to scale. Whilst every attempt has been made to ensure its accuracy measurements are approximate only and should be checked before making any decisions reliant upon them.
Copyright Bespokeplans.co.uk 2016
(ID 220713)

- One Double Bedroom
- Great Transport Links
- Private Garden
- Available 11th November 2024
- Furnished
- First months rent in advance
- Damages deposit = five weeks deposit
- Fee of Intent = one weeks rent
- EPC Rating : D
- Merton Council Tax Band : C



Energy Efficiency Rating		Current	Potential
Very energy efficient - lower running costs			
(92 plus) A			
(81-91) B			
(69-80) C			
(55-68) D		68	78
(39-54) E			
(21-38) F			
(1-20) G			
Not energy efficient - higher running costs			
England & Wales		EU Directive 2002/91/EC	



Although these particulars are believed to be correct, their accuracy is not guaranteed and they do not form part of any contract.

Celebrating 30 years of successful Sales and Lettings in Merton

