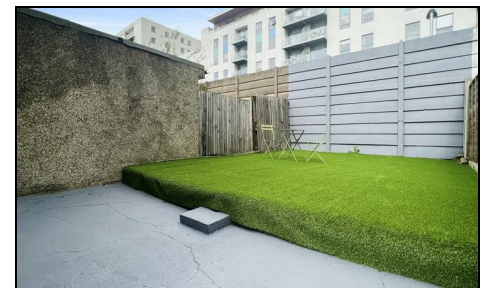
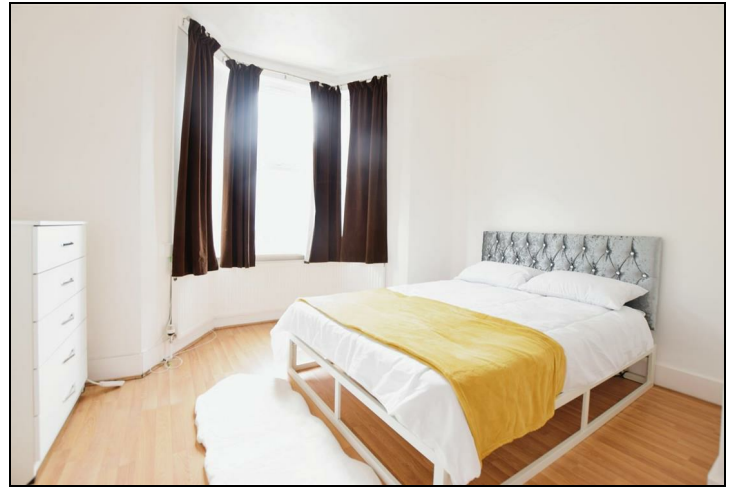


## Ellora Road Streatham, SW16 6JG

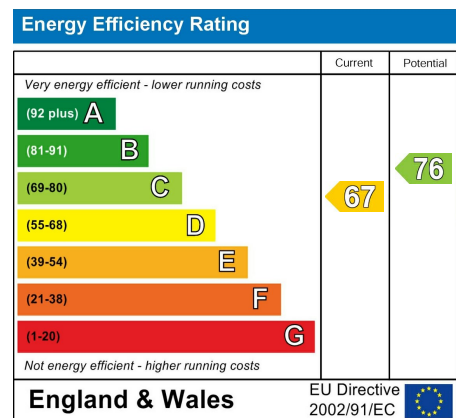
**£1,750 Per Month**



**\*\*AVAILABLE NOW\*\*** Ellisons are pleased to be marketing this spacious two double bedroom property with its own private garden, located just a short walk away from Streatham and Streatham Common National Rail Stations, providing excellent access into Central London. The property is positioned close to good local amenities, such as supermarkets and local bus routes and is also nearby to restaurants, cafes and open spaces at Streatham Common. The property itself consists of two good sized bedrooms, lounge, kitchen and shower room. Offered Furnished. Call now to arrange your viewing!



- Two Double Bedrooms
- Private Rear Garden
- Nearby Transport Links
- Available 19th July 2024
- Furnished
- First months rent in advance
- Damages deposit = five weeks deposit
- Fee of Intent = one weeks rent
- EPC Rating : D
- Lambeth Council Tax Band : C



Although these particulars are believed to be correct, their accuracy is not guaranteed and they do not form part of any contract.

**Celebrating 30 years of successful Sales and Lettings in Merton**

