

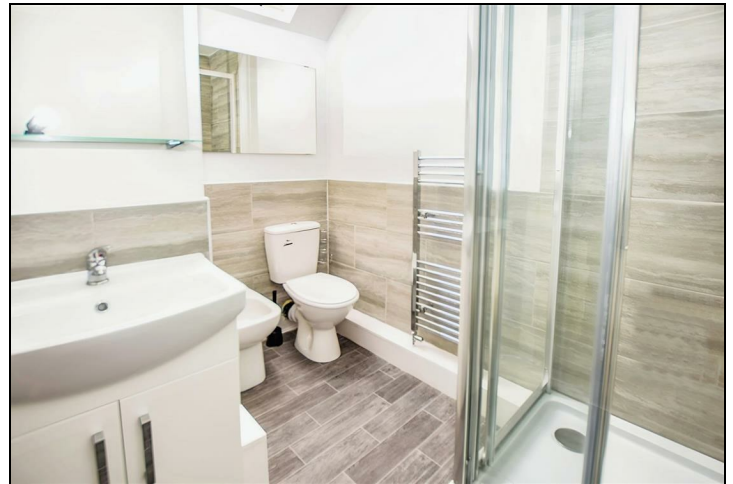
New Close Colliers Wood, SW19 2SY

£2,400 Per Month

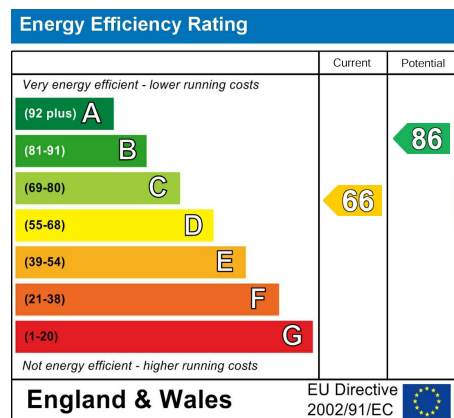


****AVAILABLE NOW**** Ellisons are pleased to offer a lovely three bedroom, two bathroom end of terrace house, located just a short walk to the ever popular Morden Hall Park and good transport links at Phipps Bridge Tram stop leading to Wimbledon and Croydon. The property comprises of three well sized bedrooms, a modern fitted kitchen, two bathrooms and a low maintenance rear garden. Please call to arrange your viewing!

PLEASE NOTE – Due to the current Article 4 and Licensing Regulations in place in certain wards of the Merton borough, this property will not be suitable for sharers.



- Three Bedrooms
- Modern Kitchen
- Rear Garden
- Close to Award Winning Park
- Available Now
- First months rent in advance
- Damages deposit = five weeks deposit
- Fee of Intent = one weeks rent
- EPC Rating : D
- Merton Council Tax Band : C



Although these particulars are believed to be correct, their accuracy is not guaranteed and they do not form part of any contract.

Celebrating 30 years of successful Sales and Lettings in Merton

