

**Church Road
Mitcham, CR4 3EX**

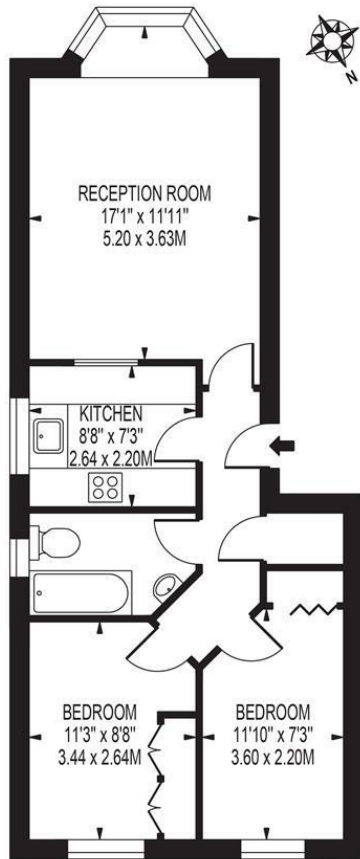
£325,000 Leasehold



A lovely, spacious two double bedroom first floor flat set within a delightful modern development offering neutral décor throughout and off-street parking, located moments from the many great amenities and Colliers Wood Tube Station (Northern Line). This would be ideal for a first time buyer or investment buyer looking in the area. Call now to arrange your viewing.

NOBLE COURT

APPROXIMATE GROSS INTERNAL FLOOR AREA: 547 SQ FT - 50.83 SQ M



FIRST FLOOR

FOR ILLUSTRATION PURPOSES ONLY

THIS FLOOR PLAN SHOULD BE USED AS A GENERAL OUTLINE FOR GUIDANCE ONLY AND DOES NOT CONSTITUTE IN WHOLE OR IN PART AN OFFER OR CONTRACT. ANY INTENDING PURCHASER OR LESSEE SHOULD SATISFY THEMSELVES BY INSPECTION, SEARCHES, ENQUIRIES AND FULL SURVEY AS TO THE CORRECTNESS OF EACH STATEMENT. ANY AREAS, MEASUREMENTS OR DISTANCES QUOTED ARE APPROXIMATE AND SHOULD NOT BE USED TO VALUE A PROPERTY OR BE THE BASIS OF ANY SALE OR LET.

- Two Double Bedrooms
- First Floor
- No Onward Chain
- Off Street Parking
- Ideal First Time Purchase
- Close To Amenities
- EPC Rating : D
- Merton Council Tax Band : C
- Lease : 999 Years From 01 January 1988
- Ground Rents (Per Annum): £80, Service Charges (Per Annum): £720



Energy Efficiency Rating		
	Current	Potential
Very energy efficient - lower running costs		
(92 plus) A		
(81-91) B		
(69-80) C		
(55-68) D	59	78
(39-54) E		
(21-38) F		
(1-20) G		
Not energy efficient - higher running costs		
England & Wales	EU Directive 2002/91/EC	

For Free Mortgage Quote and Best Mortgage Rates, call an Ellisons Mortgage Advisor on 020 8544 0518



Although these particulars are believed to be correct, their accuracy is not guaranteed and they do not form part of any contract.

Celebrating 30 years of successful Sales and Lettings in Merton

