

Myrna Close Colliers Wood, SW19 2HN

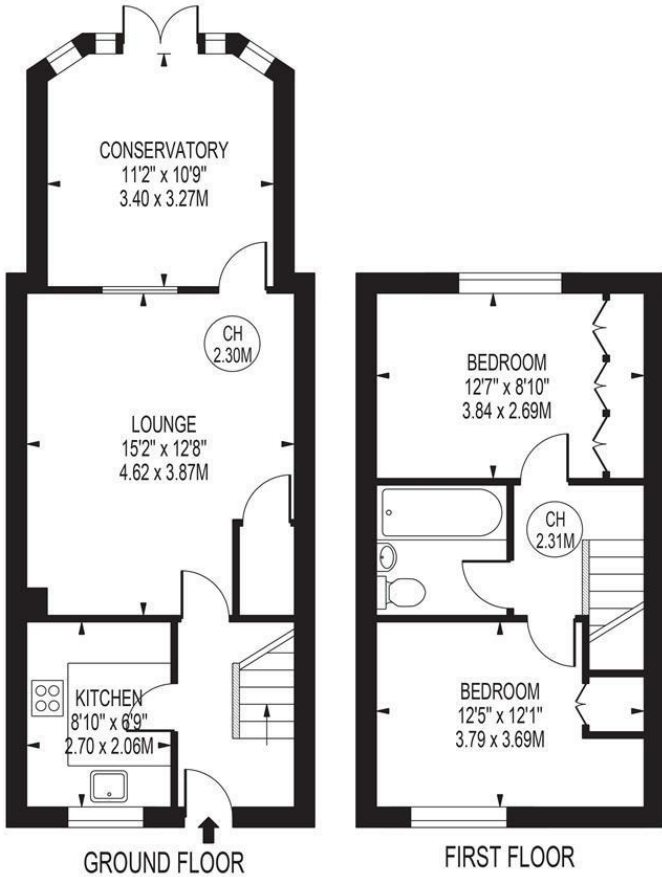
£500,000 Freehold



A two double bedroom freehold home with allocated parking space located on a quiet cul-de-sac a short walk to Colliers Wood Tube and award winning Park. Comprising of a through lounge leading onto conservatory and a landscaped private South Facing rear garden, kitchen, Two spacious double bedrooms and family bathroom. This fantastic property further benefits from good loft storage and no onward chain making this a superb purchase for the first time buyer.

MYRNA CLOSE

APPROXIMATE GROSS INTERNAL FLOOR AREA: 751 SQ FT - 69.81 SQ M



FOR ILLUSTRATION PURPOSES ONLY

THIS FLOOR PLAN SHOULD BE USED AS A GENERAL OUTLINE FOR GUIDANCE ONLY AND DOES NOT CONSTITUTE IN WHOLE OR IN PART AN OFFER OR CONTRACT. ANY INTENDING PURCHASER OR LESSEE SHOULD SATISFY THEMSELVES BY INSPECTION, SEARCHES, ENQUIRIES AND FULL SURVEY AS TO THE CORRECTNESS OF EACH STATEMENT. ANY AREAS, MEASUREMENTS OR DISTANCES QUOTED ARE APPROXIMATE AND SHOULD NOT BE USED TO VALUE A PROPERTY OR BE THE BASIS OF ANY SALE OR LET.



- Freehold House
- Two Double Bedrooms
- South Facing Garden
- Conservatory
- Off Street Parking
- Ideal First Time Purchase
- No Onward Chain
- EPC Rating : C
- Merton Council Tax Band : D

Energy Efficiency Rating		Current	Potential
Very energy efficient - lower running costs			
(92 plus)	A		90
(81-91)	B	74	
(69-80)	C		
(55-68)	D		
(39-54)	E		
(21-38)	F		
(1-20)	G		
Not energy efficient - higher running costs			
England & Wales		EU Directive 2002/91/EC	

For Free Mortgage Quote and Best Mortgage Rates, call an Ellisons Mortgage Advisor on 020 8544 0518



Although these particulars are believed to be correct, their accuracy is not guaranteed and they do not form part of any contract.

Celebrating 30 years of successful Sales and Lettings in Merton

