

FREEHOLD



House - Semi-Detached

CAMERON GREEN, TAVERHAM, NORWICH

Price Guide

£270,000

FEATURES

- No onward chain
- Three bedrooms semi detached house
- Garage conversion for bedroom or reception room
- Kitchen/dining room
- Downstairs W/C
- Enclosed rear garden
- Driveway
- Highly sought after location



3 Bedroom House - Semi-Detached located in Norwich

Nestled in the highly sought-after area of Taverham, this charming three-bedroom semi-detached house offers a delightful blend of comfort and modern living. Upon entering, you are welcomed by a bright hallway that leads to the generous lounge which provides an inviting space for relaxation and family gatherings. The heart of the home is the open-plan kitchen and dining room, which seamlessly flows into a bright conservatory, perfect for enjoying the garden views and natural light.

The property boasts three well-proportioned bedrooms, all conveniently located off the landing, along with a family bathroom that caters to the needs of the household. Additionally, the garage conversion presents a versatile space that can serve as a second reception room, a fourth bedroom, or a dedicated home office, catering to the demands of contemporary living. There is also the convenience of a downstairs cloakroom.

Outside, the enclosed rear garden offers a private sanctuary for outdoor activities and entertaining, while the driveway at the front provides ample parking for residents and guests alike. This property is not only a wonderful family home but also benefits from its prime location, making it an ideal choice for those seeking a peaceful yet connected lifestyle in Norwich. With its appealing features and spacious layout, this semi-detached house is a must-see for prospective buyers.

Entrance Hall

Fitted carpet, radiator, stairs to first floor, understairs storage, doors to rooms.

Cloakroom

Tiled flooring, part tiled walls, low level W/C, vanity sink unit, obscured double glazed to front, radiator.

Living room

14'0" x 10'8"

Vinyl flooring, radiator, double glazed bay window to front, door kitchen/dining room, door to reception room.

Kitchen/dining room

18'6" max x 11'10" max

Laminate wood flooring, range of fitted base and wall units with rolled edge work surfaces over, breakfast bar, integrated oven, hob and hood, plumbing and space for washing machine, integrated dishwasher, space for American style fridge freezer, tiled splash backs, radiator, double glazed window to rear, sliding door to conservatory.

Conservatory

10'2" x 7'6"

Laminate wood flooring, door to garden.

Reception two/bedroom

15'8" x 8'0"

Fitted carpet, radiator, double glazed window to front, door to garden, access to loft space.





NORWICH SALES | UNIT 3 VISION PARK QUEENS HILLS, NORWICH, NR8 5HD



First floor landing

Fitted carpet, doors to all rooms, access to loft space, storage cupboard.

Bedroom one

10'9" x 10'6"

Vinyl flooring, radiator, built in wardrobe, double glazed window to rear.

Bedroom two

10'9" x 8'9"

Fitted carpet, radiator, double glazed bay window to front, built in wardrobe.

Bedroom three

7'6" x 7'5"

Fitted carpet, radiator, double glazed window to rear.

Bathroom

Low level W/C, vanity sink unit, panelled bath with electric shower, tiled wall, heated towel rail, obscured double glazed window to front.

Outside

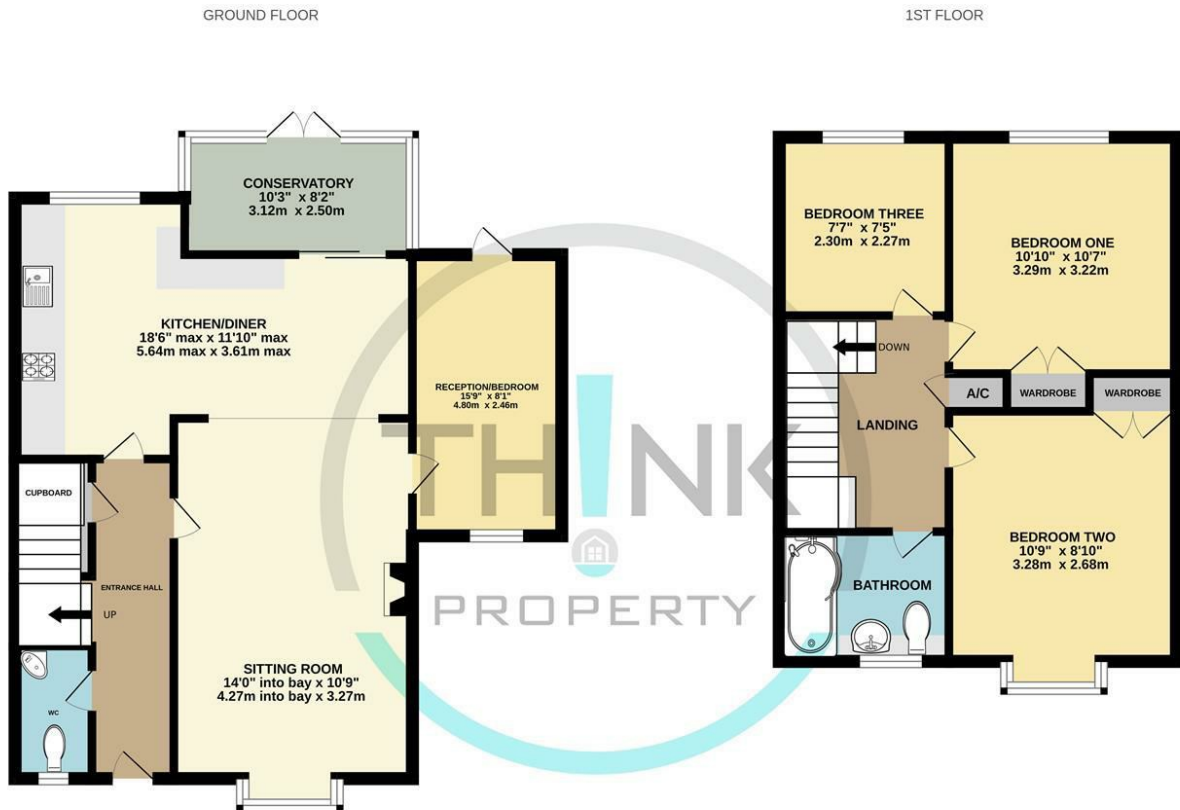
To the front is a driveway providing off road parking.



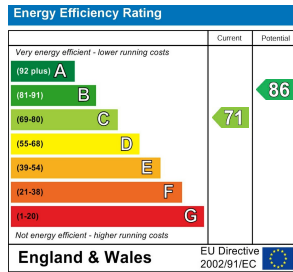
The rear garden is private, enclosed and mainly laid to lawn with a hard standing patio, timber framed storage shed and a range of plants and shrubs.

Call us on
01603 338433
norwich@thinkproperty.ltd
<https://www.thinkproperty.ltd/>

Council Tax Band
C



Whilst every attempt has been made to ensure the accuracy of the floorplan contained here, measurements of doors, windows, rooms and any other items are approximate and no responsibility is taken for any error, omission or mis-statement. This plan is for illustrative purposes only and should be used as such by any prospective purchaser. The services, systems and appliances shown have not been tested and no guarantee as to their operability or efficiency can be given.
Made with Metropix ©2025



Agents Note: Whilst every care has been taken to prepare these particulars, they are for guidance purposes only. All measurements are approximate and are for general guidance purposes only and whilst every care has been taken to ensure their accuracy, they should not be relied upon and potential buyers are advised to recheck the measurements.

