

FREEHOLD



Bungalow - Detached

11 WELL CLOSE, SPARHAM, NR9 5PS

£280,000

FEATURES

- No Onward Chain
- Extended and Improved Throughout
- Beautifully Fitted Kitchen/Breakfast Room with Herringbone Flooring
- Upgraded Electrics and Consumer Unit
- Two Double Bedroom Detached Bungalow
- Village Location
- Modern Fitted Bathroom
- Sitting Room with Wood Burner



2 Bedroom Bungalow - Detached located in Sparham

Entrance Hall

UPVC Front door, carpeted flooring, doors to bedrooms, sitting room and bathroom.

Sitting Room

Carpeted flooring, feature fireplace with wood burner, radiator, window to front, door to kitchen.

Bedroom One

Carpeted flooring, radiator, window to front.

Bedroom Two

Carpeted flooring, radiator, window to rear.

Bathroom

LVT flooring, WC, fitted bath with shower over, vanity sink unit, porcelain tiled splashbacks.

Kitchen

LVT flooring, a range of base and wall units with solid wood counter tops over, integrated hob, fridge/ freezer,

Reception Room

Window to side.



NORWICH SALES | UNIT 3 VISION PARK QUEENS HILLS, NORWICH, NR8 5HD

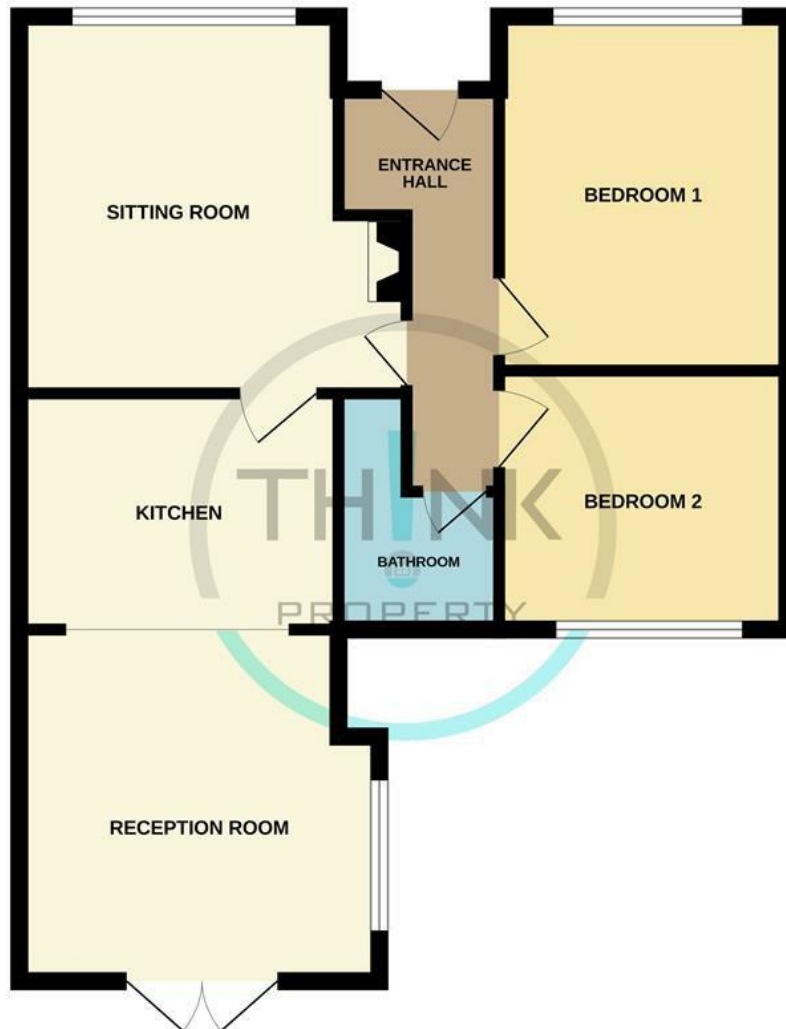


NORWICH SALES | UNIT 3 VISION PARK QUEENS HILLS, NORWICH, NR8 5HD



NORWICH SALES | UNIT 3 VISION PARK QUEENS HILLS, NORWICH, NR8 5HD

GROUND FLOOR



Whilst every attempt has been made to ensure the accuracy of the floorplan contained here, measurements of doors, windows, rooms and any other items are approximate and no responsibility is taken for any error, omission or mis-statement. This plan is for illustrative purposes only and should be used as such by any prospective purchaser. The services, systems and appliances shown have not been tested and no guarantee as to their operability or efficiency can be given.
Made with Metropix ©2024

Call us on

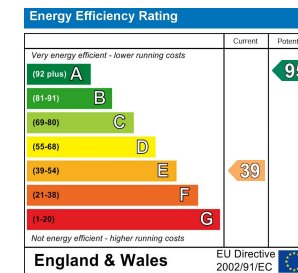
01603 338433

norwich@thinkproperty.ltd

<https://www.thinkproperty.ltd/>

Council Tax Band

A



Agents Note: Whilst every care has been taken to prepare these particulars, they are for guidance purposes only. All measurements are approximate and are for general guidance purposes only and whilst every care has been taken to ensure their accuracy, they should not be relied upon and potential buyers are advised to recheck the measurements.

