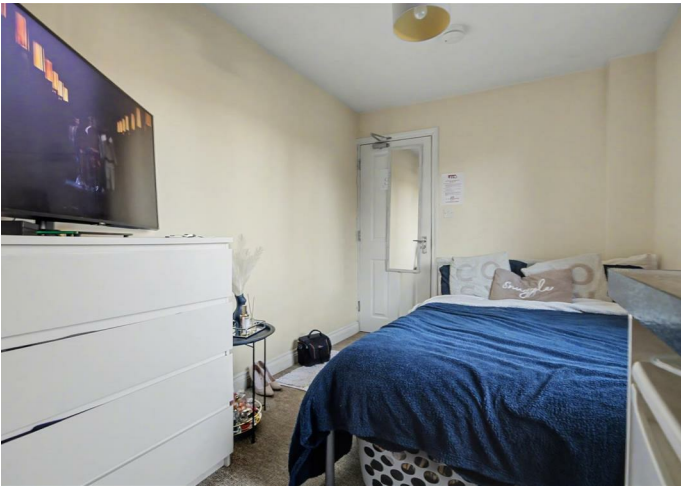
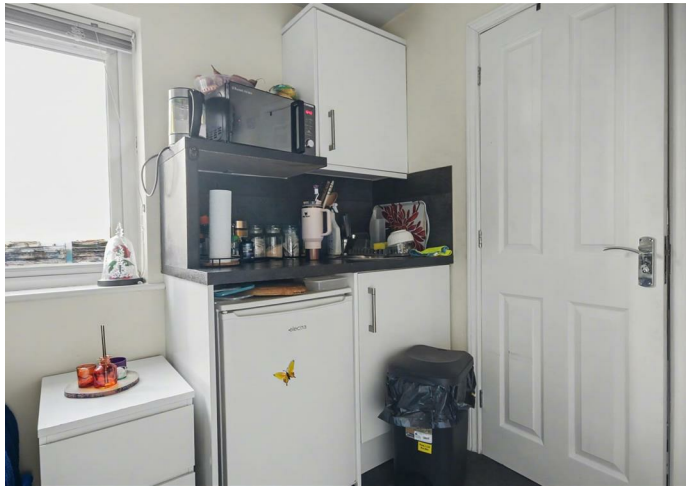


Room

ROOM 3, 3 LUSHER  
RISE, NORWICH,  
NR6 5ED

£550

FEATURES



# 1 Bedroom Room located in Norwich

Nestled in the charming area of Lusher Rise, Norwich, this delightful ground floor ensuite room offers a perfect blend of comfort and convenience. Ideal for individuals seeking a peaceful living environment, this double room is part of a friendly house share, making it an excellent choice for those who appreciate a sense of community.

The room is well-appointed with an ensuite bathroom, providing privacy and ease for your daily routines. Additionally, the property features a convenient kitchenette, allowing for simple meal preparation without the need to venture far from your personal space.


With its prime location in Norwich, residents can enjoy easy access to local amenities, including shops, cafes, and public transport links, ensuring that everything you need is within reach. This property is perfect for young professionals or students looking for a comfortable and affordable living arrangement in a vibrant city.

In summary, this ensuite double room in a house share at Lusher Rise presents an excellent opportunity for those seeking a welcoming and practical living space in Norwich. Don't miss the chance to make this lovely room your new home.

Call us on  
**01603 338433**

[norwich@thinkproperty.ltd](mailto:norwich@thinkproperty.ltd)  
<https://www.thinkproperty.ltd/>

**Council Tax Band**  
**Exempt**

Energy Efficiency Rating		
	Current	Potential
Very energy efficient - lower running costs		
(92 plus) <b>A</b>		
(81-91) <b>B</b>		
(69-80) <b>C</b>		
(55-68) <b>D</b>		
(39-54) <b>E</b>		
(21-38) <b>F</b>		
(1-20) <b>G</b>		
Not energy efficient - higher running costs		
England & Wales		EU Directive 2002/91/EC 

Agents Note: Whilst every care has been taken to prepare these particulars, they are for guidance purposes only. All measurements are approximate and are for general guidance purposes only and whilst every care has been taken to ensure their accuracy, they should not be relied upon and potential buyers are advised to recheck the measurements.

