

LEASEHOLD



House - End Terrace

**15 POPPY STREET,
WYMONDHAM,
NORFOLK, NR18
0YU**

Price Guide

£94,500

FEATURES

- 35% SHARED OWNERSHIP SCHEME
- MODERN END TERRACE HOUSE
- DOWNSTAIRS CLOAKROOM
- COURTYARD GARDEN
- THREE BEDROOMS
- HIGHLY SOUGHT AFTER LOCATION
- KITCHEN/DINING ROOM
- TWO ALLOCATED PARKING SPACES



3 Bedroom House - End Terrace located in Wymondham

**** 35% Shared Ownership **** Welcome to this beautifully presented three-bedroom end terrace house located on Poppy Street, in the highly sought after location of Wymondham. This charming property is part of a shared ownership scheme, offering a 35% share, making it an excellent opportunity for first-time buyers!

Upon entering, you are greeted by a welcoming entrance hall that leads to a spacious lounge, perfect for relaxation and entertaining. The ground floor also features a well-appointed kitchen/diner, providing an ideal space for family meals and gatherings. The layout is both practical and inviting, ensuring a comfortable living experience. There is also a useful cloakroom on the ground floor for added convenience.

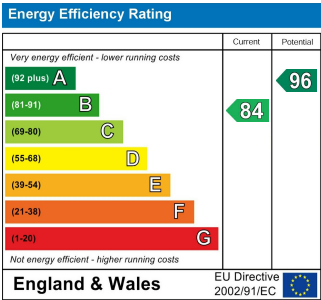
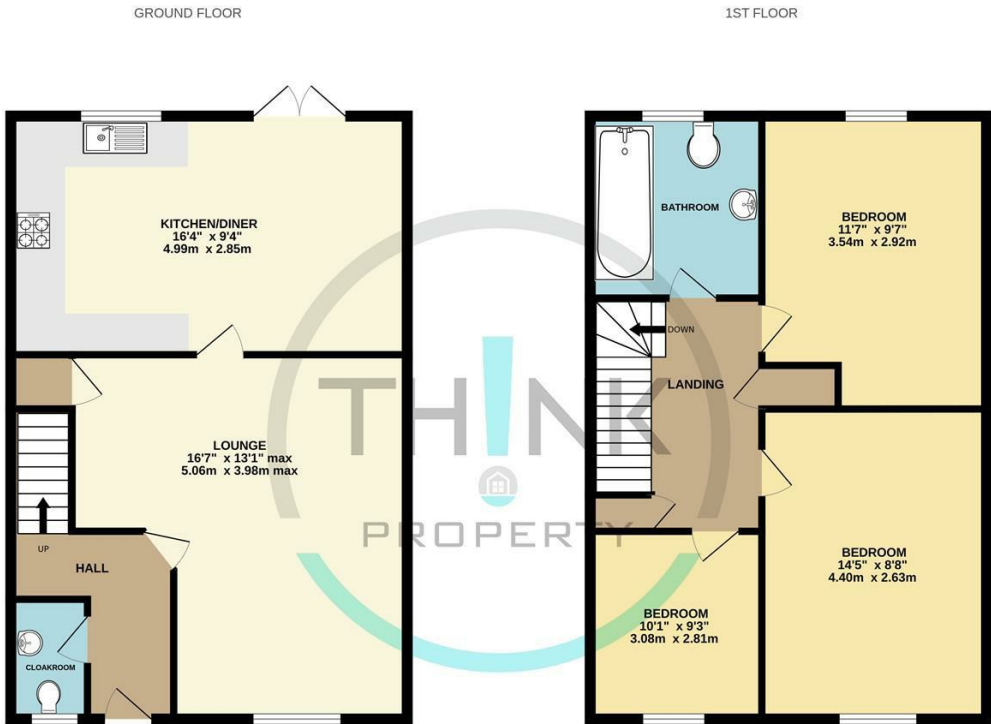
As you ascend to the first floor, you will find three generous bedrooms, each offering ample space for personalisation and comfort. The family bathroom is conveniently located, catering to the needs of the household.

Outside, the property boasts a private enclosed paved courtyard garden, surrounded by timber fencing, providing a peaceful retreat for outdoor enjoyment. Additionally, there is a storage

Call us on
01603 338433

norwich@thinkproperty.ltd
<https://www.thinkproperty.ltd/>

Council Tax Band
C



Agents Note: Whilst every care has been taken to prepare these particulars, they are for guidance purposes only. All measurements are approximate and are for general guidance purposes only and whilst every care has been taken to ensure their accuracy, they should not be relied upon and potential buyers are advised to recheck the measurements.

Whilst every attempt has been made to ensure the accuracy of the floorplan contained here, measurements of doors, windows, rooms and any other items are approximate and no responsibility is taken for any error, omission or mis-statement. This plan is for illustrative purposes only and should be used as such by any prospective purchaser. The services, systems and appliances shown have not been tested and no guarantee as to their operability or efficiency can be given.
Made with Metropix ©2025

