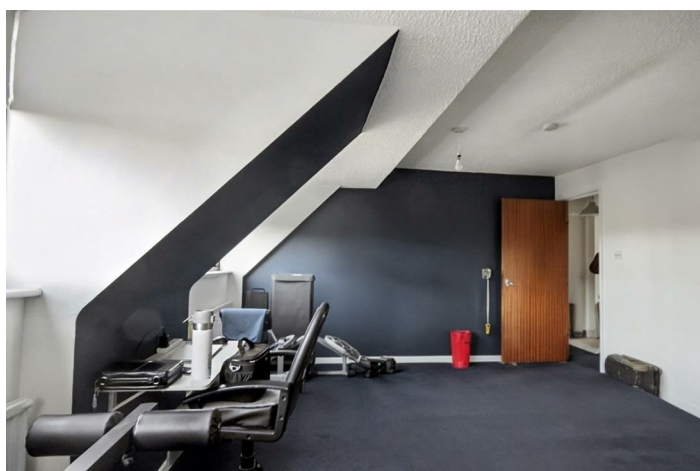


TO LET



Apartment (EPC Rating: C)

63 INGRAM COURT, NORWICH, NR1 2HQ

Per Month

£750pcm

- 2nd Floor Flat
- Parking
- Generous sized rooms
- Convenient location

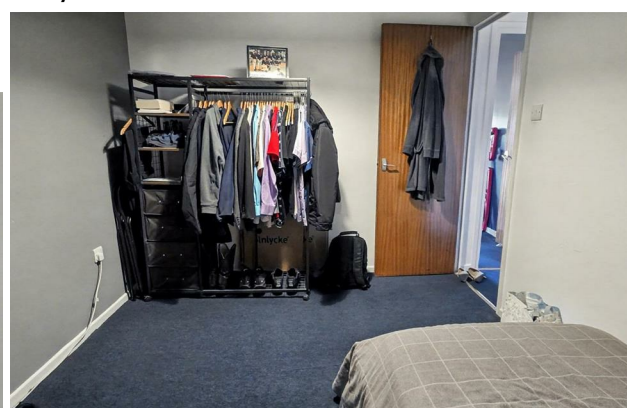
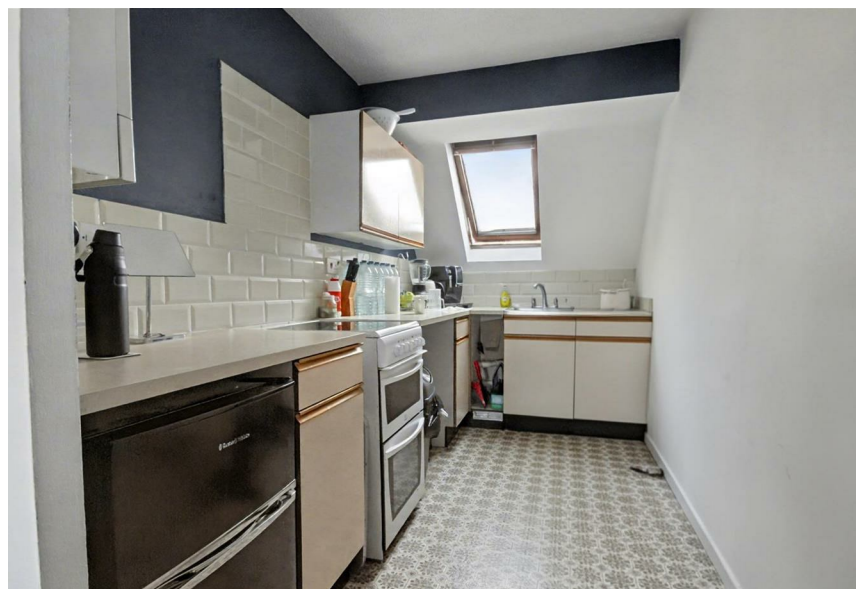


1 Bedroom Apartment located in Norwich

Welcome to this charming second-floor flat located in the desirable Ingram Court, Norwich. This delightful property features a spacious living room, perfect for relaxation and entertaining guests. The flat comprises one well-proportioned bedroom, providing a comfortable retreat for rest and relaxation. Additionally, there is a modern bathroom that caters to all your needs.

One of the standout features of this property is its convenient location, which offers easy access to local amenities, shops, and transport links, making it an ideal choice for both professionals and those seeking a peaceful lifestyle. The flat also benefits from off-road parking, a valuable asset in this bustling area, ensuring that you have a secure place for your vehicle.

With its combination of space, comfort, and convenience, this flat is sure to appeal to a wide range of potential residents. Do not miss the chance to make this lovely flat your new home in Norwich.



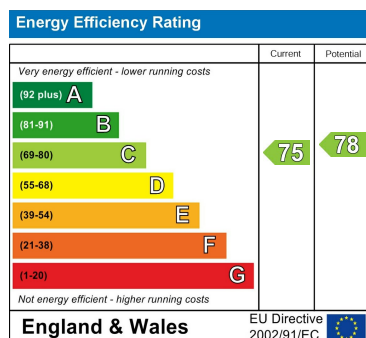
GROUND FLOOR
429 sq.ft. (39.8 sq.m.) approx.



Council Tax Band

A

Energy Performance Graph



Call us on

01603 338433

norwich@thinkproperty.ltd

<https://www.thinkproperty.ltd/>

Agents Note: Whilst every care has been taken to prepare these particulars, they are for guidance purposes only. All measurements are approximate and are for general guidance purposes only and whilst every care has been taken to ensure their accuracy, they should not be relied upon and potential buyers are advised to recheck the measurements.

