

FREEHOLD



House - Detached

14 CAMERON GREEN, TAVERHAM, NORWICH, NR8 6UA

Price Guide

£325,000

FEATURES

- £325,000 - £335,000
- Kitchen/Dining Room
- Generous Accommodation
- Modern Shower Room
- Three Bedroom Detached
- Downstairs W/C
- Air Conditioning
- Garage & Driveway



3 Bedroom House - Detached located in Norwich

**** £325,000 - £335,000 **** Located in the highly sought after suburb of Taverham, this beautiful air conditioned three-bedroom detached home offers a perfect blend of comfort and modern living. Upon entering, you are greeted by a welcoming entrance hall that leads to a spacious kitchen/dining room, ideal for family meals and entertaining guests. The lounge provides a cosy retreat, while the cloakroom adds convenience to the ground floor. A delightful conservatory extends the living space, allowing natural light to flood in and offering a serene view of the garden.

The first floor boasts three well-proportioned bedrooms, perfect for families or those needing extra space. A modern family shower room completes this level, ensuring that all your needs are met. The property is equipped with air conditioning, providing a comfortable environment throughout the year.

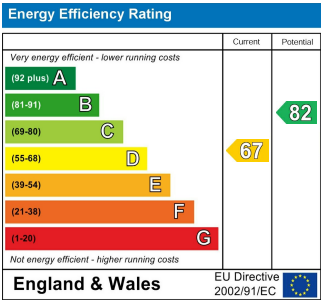
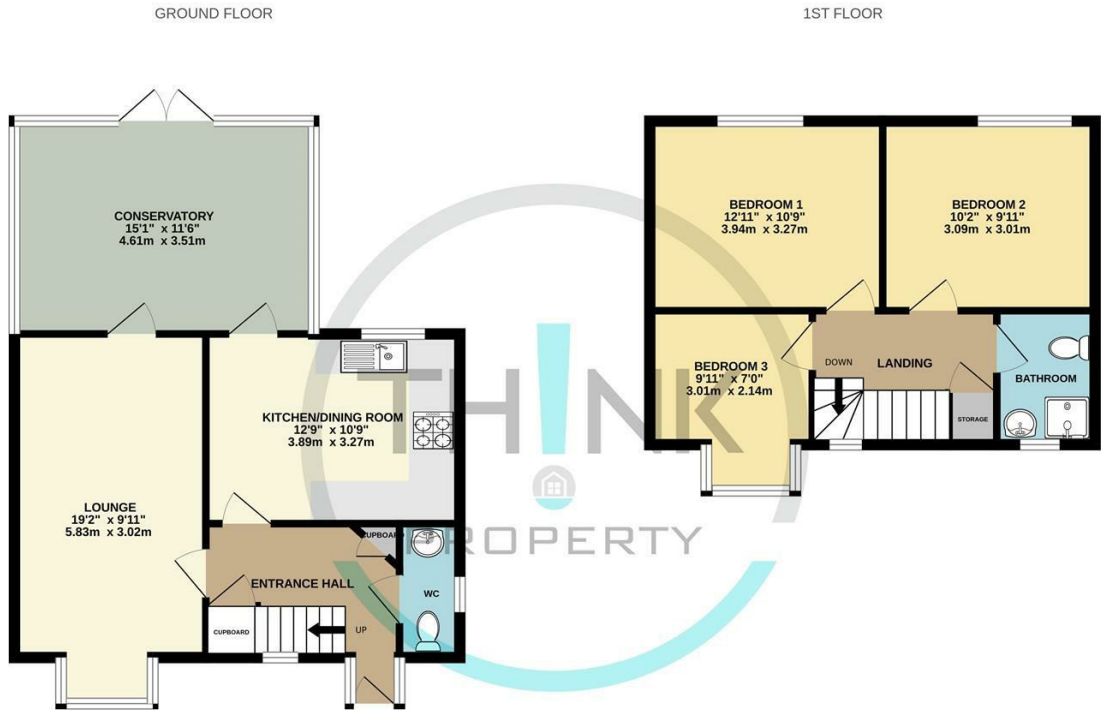
Outside, you will find a driveway with parking for two vehicles, along with a garage for additional storage. The enclosed private rear garden is a true highlight, featuring a range of mature plants, trees, and shrubs that create a tranquil oasis. A charming timber-framed summer house offers a perfect spot for relaxation or hobbies.

This home is offered with no onward chain, making it an ideal choice for those looking to move swiftly. Additionally, its close proximity to local schools makes it a fantastic option for families. This property is not just a house; it is a place where memories can be made. Don't miss the opportunity to make it your own.

Call us on
01603 338433

norwich@thinkproperty.ltd
<https://www.thinkproperty.ltd/>

Council Tax Band
C



Agents Note: Whilst every care has been taken to prepare these particulars, they are for guidance purposes only. All measurements are approximate and are for general guidance purposes only and whilst every care has been taken to ensure their accuracy, they should not be relied upon and potential buyers are advised to recheck the measurements.

Whilst every attempt has been made to ensure the accuracy of the floorplan contained here, measurements of doors, windows, rooms and any other items are approximate and no responsibility is taken for any error, omission or mis-statement. This plan is for illustrative purposes only and should be used as such by any prospective purchaser. The services, systems and appliances shown have not been tested and no guarantee as to their operability or efficiency can be given.
Made with Metropix ©2025

