



House - Terraced

2 BRUNSWICK CLOSE, TOFTWOOD, DEREHAM, NR19 1XW

PCM

£950 PCM

FEATURES

- Available Now
- En-Suite
- Modern Kitchen
- Off Road Parking
- Two Bedrooms
- Downstairs WC
- Enclosed Rear Garden
- Built in Storage



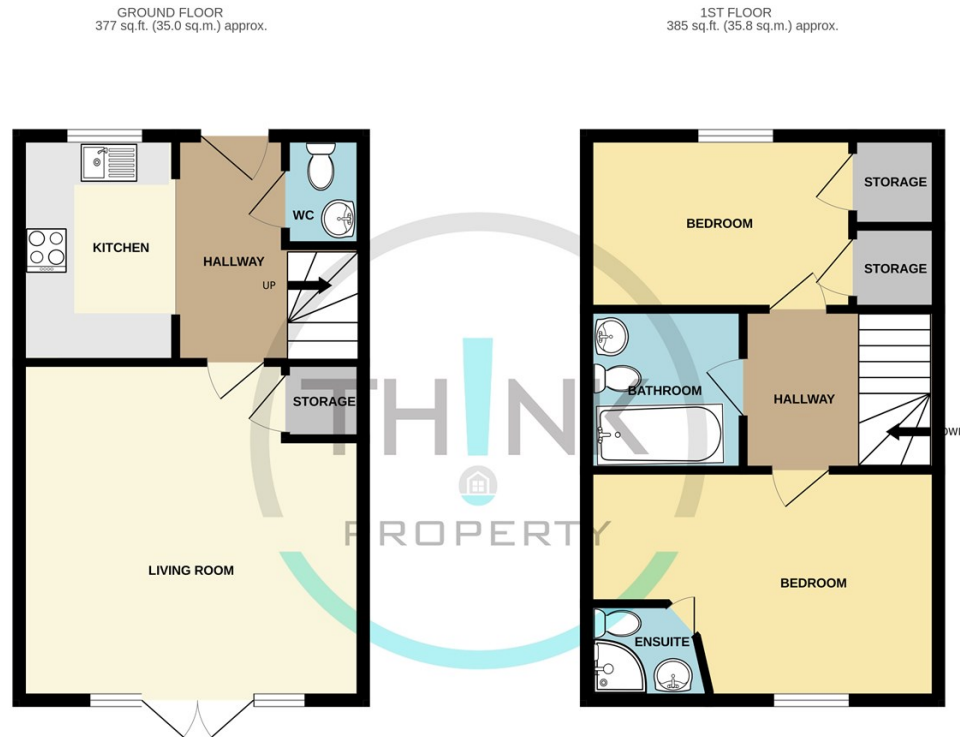
2 Bedroom House - Terraced located in Dereham

Introducing this two-bedroom mid terraced house located in Dereham which is just a short drive to the Town Centre and surrounded by many local amenities. The property itself comes complete with a modern fitted kitchen, downstairs WC, En-suite off the master bedroom, plenty of storage, French doors leading into the enclosed rear garden, and off-road parking.

Call us on
01603 338433

norwich@thinkproperty.ltd
<https://www.thinkproperty.ltd/>

Council Tax Band
B



Whilst every attempt has been made to ensure the accuracy of the floorplan contained here, measurements of doors, windows, rooms and any other items are approximate and no responsibility is taken for any error, omission or mis-statement. This plan is for illustrative purposes only and should be used as such by any prospective purchaser. The services, systems and appliances shown have not been tested and no guarantee as to their operability or efficiency can be given.

Made with Metropix ©2023

Energy Efficiency Rating		
	Current	Potential
Very energy efficient - lower running costs		
(92 plus) A		92
(81-91) B		
(69-80) C		
(55-68) D	68	
(39-54) E		
(21-38) F		
(1-20) G		
Not energy efficient - higher running costs		
England & Wales	EU Directive 2002/91/EC	

Agents Note: Whilst every care has been taken to prepare these particulars, they are for guidance purposes only. All measurements are approximate and are for general guidance purposes only and whilst every care has been taken to ensure their accuracy, they should not be relied upon and potential buyers are advised to recheck the measurements.

