



Maisonette

MAGNOLIA WAY COSTESSEY NORWICH NR8 5EH

Offers In The Region Of
£170,000

FEATURES

- Coach house
- Sitting/dining room
- Spacious Feel
- Good Decor
- Two bedrooms
- Nice Kitchen
- Bathroom
- Parking Space



2 Bedroom Maisonette located in Costessey

Entrance Hall

Sealed unit double glazed entrance door to front, stairs leading up to the first floor, radiator

Open Plan Lounge/Diner

13'2 x 18'6

Doors to all rooms, opening to kitchen, radiator and double glazed windows to front and rear.

Kitchen

7'8 x 7'1

Double glazed window to rear, fitted range of wall and base units with work tops over, sink and drainer, fitted oven and hob, space for fridge/freezer, washing machine and dishwasher, tiled floor.

Bedroom One

12' x 12'

Double glazed window to front with radiator

Bedroom 2

10'5 x 7'2

Sealed unit double glazed window to the front, radiator.

Bathroom

9'3 x 6'3

Sealed unit double glazed window to the rear, panel bath and separate shower, wc and wash hand basin. Splash backs.

Outside

Allocated parking space



NORWICH SALES | UNIT 3 VISION PARK QUEENS HILLS, NORWICH, NR8 5HD

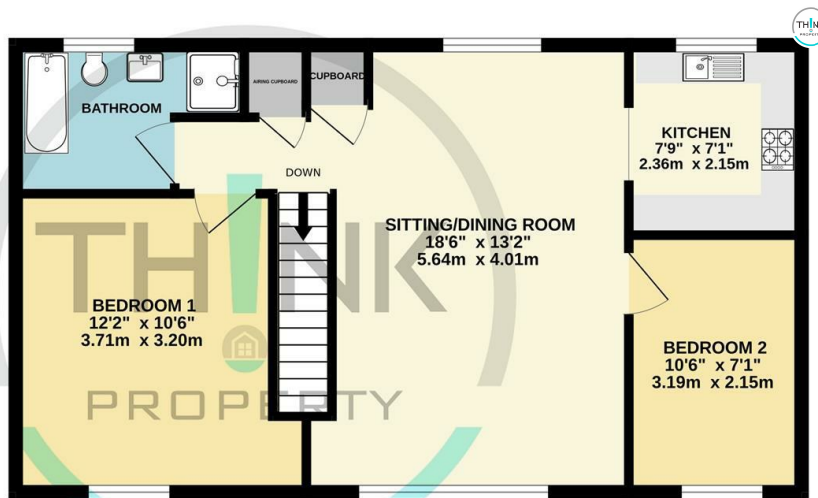
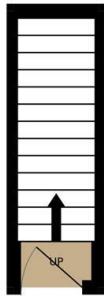
Call us on
01603 338433

norwich@thinkproperty.ltd
<https://www.thinkproperty.ltd/>

Council Tax Band
B

GROUND FLOOR

1ST FLOOR



Whilst every attempt has been made to ensure the accuracy of the floorplan contained here, measurements of doors, windows, rooms and any other items are approximate and no responsibility is taken for any error, omission or mis-statement. This plan is for illustrative purposes only and should be used as such by any prospective purchaser. The services, systems and appliances shown have not been tested and no guarantee as to their operability or efficiency can be given.
 Made with Metropix ©2024

Energy Efficiency Rating		
	Current	Potential
Very energy efficient - lower running costs		
(92 plus) A		
(81-91) B	77	77
(69-80) C		
(55-68) D		
(39-54) E		
(21-38) F		
(1-20) G		
Not energy efficient - higher running costs		
England & Wales	EU Directive 2002/91/EC	

Agents Note: Whilst every care has been taken to prepare these particulars, they are for guidance purposes only. All measurements are approximate and are for general guidance purposes only and whilst every care has been taken to ensure their accuracy, they should not be relied upon and potential buyers are advised to recheck the measurements.

