

LEASEHOLD



Apartment

PENTHOUSE APARTMENT 14 BIGNOLD HOUSE SURREY STREET NORWICH NR1 3NX

Offers Over

£350,000

FEATURES

- Historic Building
- Ground Floor
- Two Bedrooms
- New Kitchen
- No Onward Chain
- City Centre
- Stunning Conversion
- Open Plan Living
- New Shower Room
- 997 years remaining on lease



2 Bedroom Apartment located in Norwich

Communal Grand Hall

Grand entrance doors to the main hall with stone floors, post boxes, security entrance system, sweeping staircase with panelled walls, part glazed door to ground floor hall giving access to four apartments.

Entrance Hall

Security door entry system, impressive hallway with doors to open plan living/dining/kitchen room and the shower room with further opening to inner hall. This in turn has doors to the walk in cupboard and both bedrooms.

Kitchen

10'6 x 7'3

Fitted range of wall and base units with laminate white marble effect worktops over, integrated fridge-freezer, sink, washer/dryer, dishwasher, oven, and hob with extractor fan over.

Dining Room

17'5 x 13'5

Double glazed window to front, and openings to kitchen and hallway.

Sitting Room

21'8 x 15'1

Double glazed window to rear, carpeted floor, and opening to hallway.

Principal Bedroom

17'5 x 12'6

Double glazed windows to front and side, carpeted floor, and access to ensuite.

Ensuite

Three piece suite comprising of sink unit with storage under, shower cubicle, and WC.

Bedroom Two

16'9 x 16'9

Double glazed windows to side and rear, and carpeted floor.

Shower Room

Three piece suite comprising of shower cubicle, WC, and sink unit.

Store

Storage area/Utility Room with access through penthouse lobby.



NORWICH SALES | UNIT 3 VISION PARK QUEENS HILLS, NORWICH, NR8 5HD



NORWICH SALES | UNIT 3 VISION PARK QUEENS HILLS, NORWICH, NR8 5HD



NORWICH SALES | UNIT 3 VISION PARK QUEENS HILLS, NORWICH, NR8 5HD

PENTHOUSE

Call us on

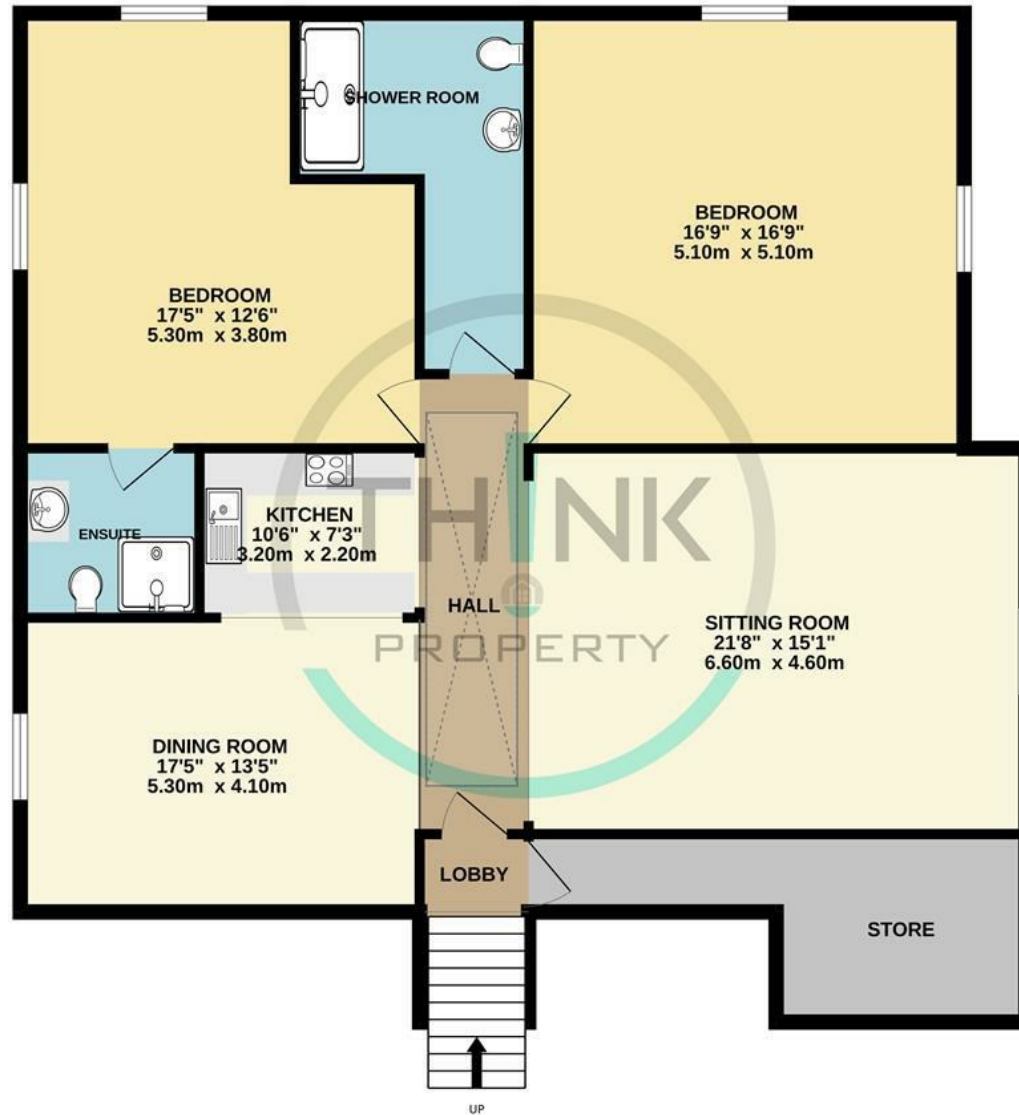
01603 338433

norwich@thinkproperty.ltd

<https://www.thinkproperty.ltd/>

Council Tax Band

C



Whilst every attempt has been made to ensure the accuracy of the floorplan contained here, measurements of doors, windows, rooms and any other items are approximate and no responsibility is taken for any error, omission or mis-statement. This plan is for illustrative purposes only and should be used as such by any prospective purchaser. The services, systems and appliances shown have not been tested and no guarantee as to their operability or efficiency can be given.
Made with Metropix ©2024

Agents Note: Whilst every care has been taken to prepare these particulars, they are for guidance purposes only. All measurements are approximate and are for general guidance purposes only and whilst every care has been taken to ensure their accuracy, they should not be relied upon and potential buyers are advised to recheck the measurements.

