

LEASEHOLD



Apartment

APARTMENT 6, BIGNOLD HOUSE SURREY STREET, NORWICH, NR1 3NX

£250,000

FEATURES

- Bignold House
- One Double Bedroom
- Fully Fitted Kitchen
- Newly Renovated
- Grade Two Listed
- Jack and Jill Bathroom
- Smart Intercom System
- City Centre



1 Bedroom Apartment located in Norwich

Welcome to Bignold House, a charming Grade two listed apartment located on Surrey Street in the heart of Norwich. This recently renovated one-bedroom apartment boasts a delightful Jack and Jill bathroom, perfect for modern living. This apartment also benefits from a large living space as well as a fully fitted kitchen.

Communal Grand Entrance

Grand entrance doors to the main hall with stone floors, post boxes, security entrance system, sweeping staircase with panelled walls, part glazed door to ground floor hall giving access to four apartments.

Living room

18'8" x 15'8"

Two Sash windows with secondary double glazing to the front aspect, cupboard housing electrics, touch screen control panel and intercom system, electric radiators, and access to all rooms.

Bedroom

9'2" x 13'5"

Two sash windows with secondary double glazing to the side aspect, electric radiator, carpet to floor and access to Jack and Jill Bathroom.

Kitchen

9'10" x 9'10"

Sash window with secondary double glazing to the front aspect, A range of integrated fitted wall and base units, including appliances such as a washer/dryer, dishwasher, and an induction hob. The kitchen also comes equipped with a fitted fridge freezer and an electric oven.

Bathroom

6'2" x 9'10"

Jack and Jill doors leading to both living room and bedroom. Sash window with

secondary double glazing to the side aspect, low level WC, sink basin with storage, heated towel rail, walk in shower with glass screen, tiled flooring and splash back tiles.

Communal Grand Entrance

Grand entrance doors to the main hall with stone floors, post boxes, security entrance system, sweeping staircase with panelled walls, part glazed door to ground floor hall giving access to four apartments.

Living room

18'8" x 15'8"

Two Sash windows with secondary double glazing to the front aspect, cupboard housing electrics, touch screen control panel and intercom system, electric radiators, and access to all rooms.

Bedroom

9'2" x 13'5"

Two sash windows with secondary double glazing to the side aspect, electric radiator, carpet to floor and access to Jack and Jill Bathroom.

Kitchen

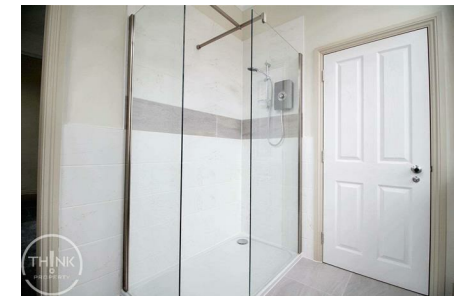
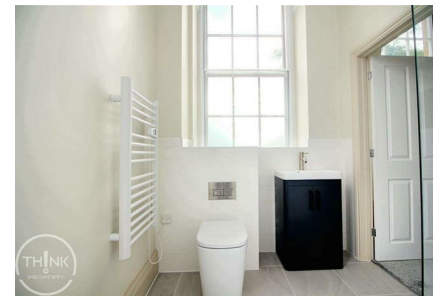
9'10" x 9'10"

Sash window with secondary double glazing to the front aspect, A range of integrated fitted wall and base units, including appliances such as a washer/dryer, dishwasher, and an induction hob. The kitchen also comes equipped with a fitted fridge freezer and an electric oven.

Bathroom

6'2" x 9'10"

Jack and Jill doors leading to both living room and bedroom. Sash window with secondary double glazing to the side aspect, low level WC, sink basin with storage, heated towel rail, walk in





NORWICH SALES | UNIT 3 VISION PARK QUEENS HILLS, NORWICH, NR8 5HD



shower with glass screen, tiled flooring and splash back tiles.



NORWICH SALES | UNIT 3 VISION PARK QUEENS HILLS, NORWICH, NR8 5HD

Call us on

01603 338433

norwich@thinkproperty.ltd

<https://www.thinkproperty.ltd/>

Council Tax Band

A

FIRST FLOOR



Whilst every attempt has been made to ensure the accuracy of the floorplan contained here, measurements of doors, windows, rooms and any other items are approximate and no responsibility is taken for any error, omission or mis-statement. This plan is for illustrative purposes only and should be used as such by any prospective purchaser. The services, systems and appliances shown have not been tested and no guarantee as to their operability or efficiency can be given.
Made with Metropix ©2024

Agents Note: Whilst every care has been taken to prepare these particulars, they are for guidance purposes only. All measurements are approximate and are for general guidance purposes only and whilst every care has been taken to ensure their accuracy, they should not be relied upon and potential buyers are advised to recheck the measurements.

