



House Share

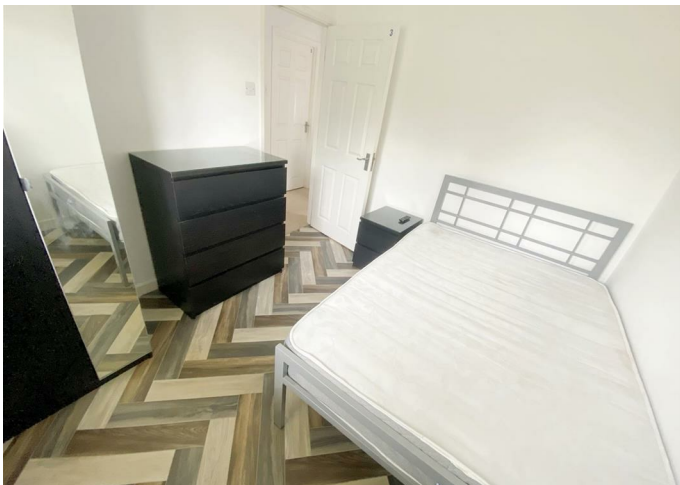
ROOM 3, 2B MORSE AVENUE, NORWICH, NR1 4PW

PCM

£500 PCM

FEATURES

- 6 BEDROOM DETACHED HOUSE
- ENCLOSED REAR GARDEN SHARE
- TWO BATHROOMS
- OFF ROAD PARKING
- MODERN DECOR



1 Bedroom House Share located in Norwich

AVAILABLE FROM 29TH JULY Room to suit professional in a modern, contemporary house. This delightful double room is offered fully furnished included a double bed, chest of drawers, wardrobe, bed side table and wall mounted TV. There is a modern kitchen, complete with appliances and a shared garden. ALL BILLS INCLUDED!

Call us on

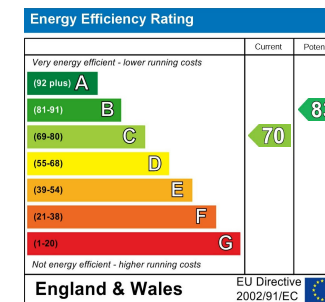
01603 338433

norwich@thinkproperty.ltd

<https://www.thinkproperty.ltd/>

Council Tax Band

Exempt



Agents Note: Whilst every care has been taken to prepare these particulars, they are for guidance purposes only. All measurements are approximate and are for general guidance purposes only and whilst every care has been taken to ensure their accuracy, they should not be relied upon and potential buyers are advised to recheck the measurements.

