

LEASEHOLD



Apartment

FLAT 5, CHEENA COURT SOLARIO ROAD, COSTESSEY, NR8 5EP

Asking Price

£140,000

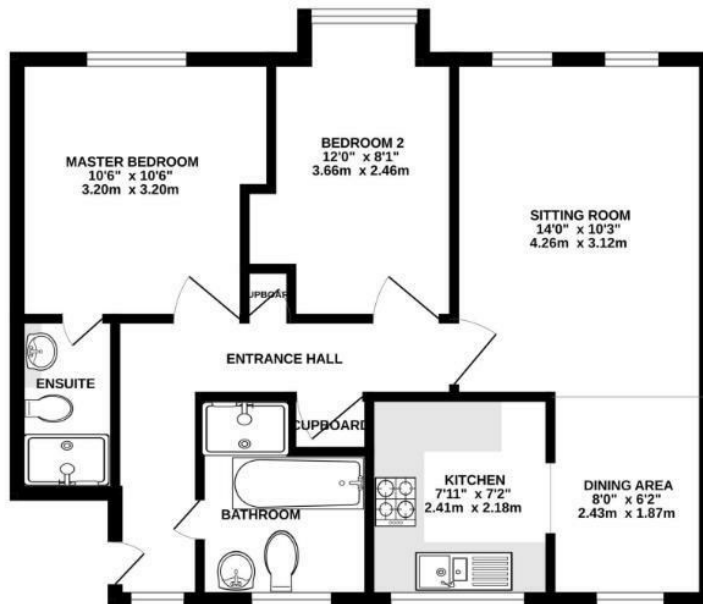
FEATURES

- No Onward Chain
- Open Plan Living/Dining Room Linking to Modern Fitted Kitchen
- Separate Bathroom with Shower and Bath
- Courtyard Style Complex
- Good Access to A47 Southern Bypass
- Light and Airy Two Double Bedroom First Floor Apartment



2 Bedroom Apartment located in Costessey

No Chain! Light and airy, well presented two double bedroom first floor apartment with parking, close to amenities and facilities. Situated in courtyard style complex within the development giving a sense of privacy, ideal for those that need a lock up and leave due to the secure entrance only accessible via an intercom. The accommodation comprises entrance hall, bathroom, master bedroom with ensuite, further double bedroom, storage and open plan sitting/dining room that links on to the modern fitted kitchen.



While every attempt has been made to ensure the accuracy of the floorplan contained here, measurements of items, fixtures, fittings and any other items are approximate and the responsibility is taken for any error. Details of this agreement. This plan is for illustrative purposes only and should be used as a guide for prospective purchasers. The contents, systems and appliances shown have not been tested and no guarantee as to their operability or efficiency can be given.
Made with Neoplex ©2024

Call us on
01603 338433

norwich@thinkproperty.ltd
<https://www.thinkproperty.ltd/>

Council Tax Band
B

Energy Efficiency Rating		Current	Potential
<i>Very energy efficient - lower running costs</i>			
(92 plus) A			
(81-91) B		81	86
(69-80) C			
(55-68) D			
(39-54) E			
(21-38) F			
(1-20) G			
<i>Not energy efficient - higher running costs</i>			
England & Wales		EU Directive 2002/91/EC	

Agents Note: Whilst every care has been taken to prepare these particulars, they are for guidance purposes only. All measurements are approximate and are for general guidance purposes only and whilst every care has been taken to ensure their accuracy, they should not be relied upon and potential buyers are advised to recheck the measurements.

