

FREEHOLD



House - Detached

# 2 SHEPHERD WAY, TAVERHAM, NR8 6UD

## £485,000

### FEATURES

- Four Bedroom Detached Family Home
- Beautifully Presented Throughout
- Four Reception Rooms Including Garden Room
- Kitchen/Breakfast Room, Utility Room, En-Suite, Family Bathroom and W.C



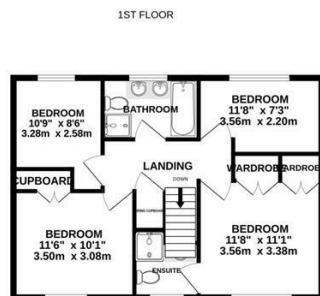
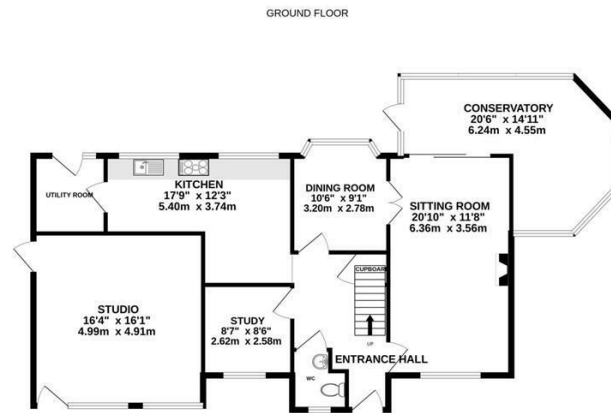
# 4 Bedroom House - Detached located in Taverham

Deceptively spacious four double bedroom detached family home set in an enviably quiet spot on the estate near woodlands and nice walks. The home has a lot of accommodation to offer which in turn would suit a number of buyers and the current owners have put a lot of effort into creating the finish and making the home work for them.

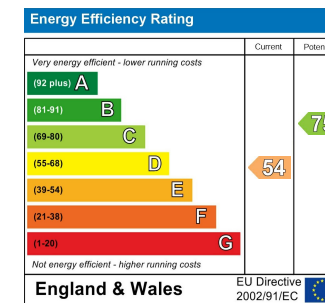
Call us on  
01603 338433

[norwich@thinkproperty.ltd](mailto:norwich@thinkproperty.ltd)  
<https://www.thinkproperty.ltd/>

Council Tax Band  
**E**



Whilst every attempt has been made to ensure the accuracy of the floorplan contained here, measurements of doors, windows, rooms and any other items are approximate and no responsibility is taken for any error, omission or mis-statement. This plan is for illustrative purposes only and should be used as such for any prospective purchase. The services, systems and appliances shown have not been tested and no guarantee as to their operability or efficiency can be given.  
Made with Metrepx ©2023



Agents Note: Whilst every care has been taken to prepare these particulars, they are for guidance purposes only. All measurements are approximate and are for general guidance purposes only and whilst every care has been taken to ensure their accuracy, they should not be relied upon and potential buyers are advised to recheck the measurements.

