

FREEHOLD



House - Terraced

BELVOIR STREET GOLDEN TRIANGLE NORWICH NR2 3AY

Offers In Excess Of

£220,000

FEATURES

- Victorian Mid Terrace
- Sitting/Dining Room
- Ensuite Bathroom
- Close To City
- Two Bedrooms
- Newly Fitted Kitchen
- Bi Sected Rear Garden
- No Chain



2 Bedroom House - Terraced located in Norwich

Sitting/Dining Room

12'5 max x 19'10 max

Half glazed door to the front, bow window to the front and further window to the rear, understairs cupboard, stairs to the first floor, radiator and door to the kitchen.

Kitchen

11'0 x 6'3

Window to rear, range of base and wall mounted units, integrated hob, oven and tiled splash backs. Space for further appliances. Half glazed door to the side.

Landing

Doors to both bedrooms.

Master Bedroom

12'5 max x 11'2

Window to the front, radiator and built in wardrobes and radiator.

Bedroom 2

8'9 x 9'0

Window to the rear, radiator.

Bathroom

Window to the side, suite comprising p shaped panel bath with screen and rainfall shower over, wash hand basin, wc, tiled walls and heated towel rail.

Outside

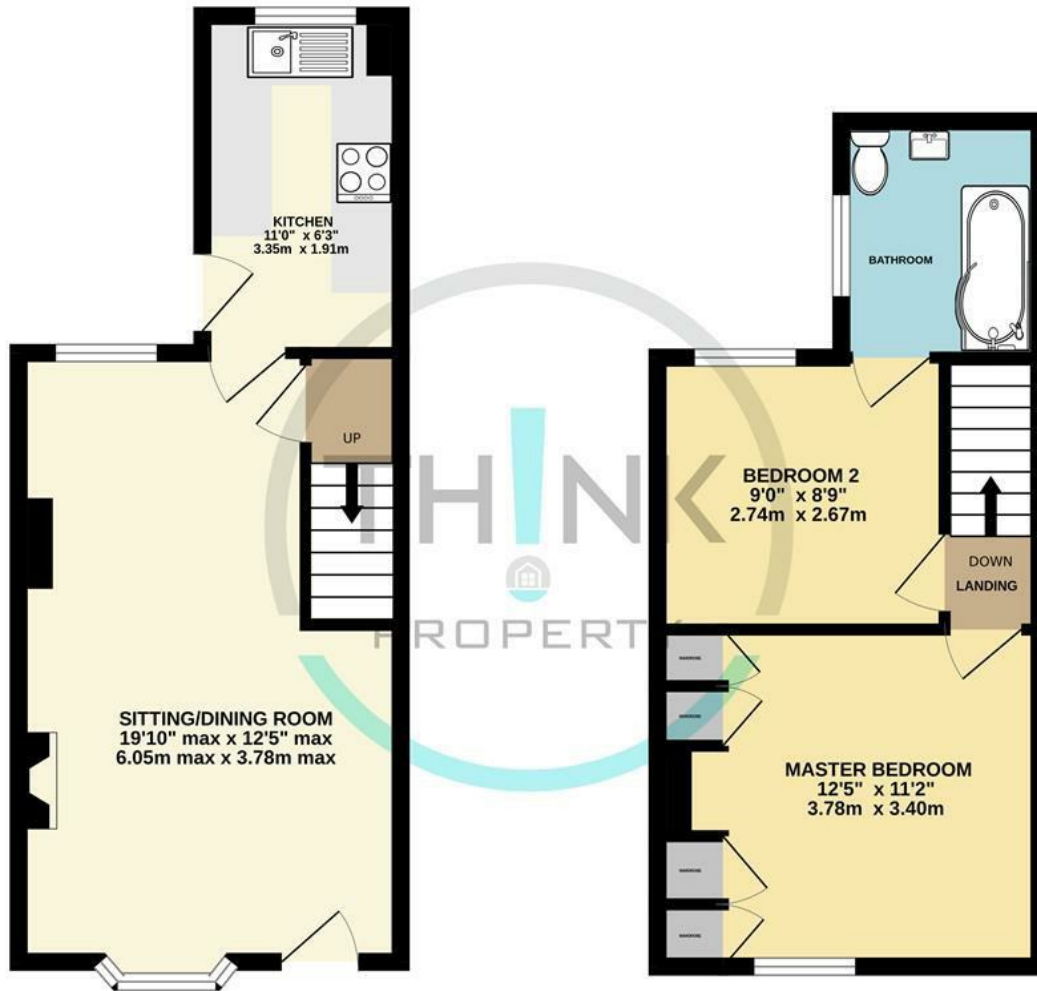
There is a walled garden to the front with access to the bi sected rear garden. Mainly imitation grass and enclosed with good sized patio and a garden shed.



NORWICH SALES | UNIT 3 VISION PARK QUEENS HILLS, NORWICH, NR8 5HD

GROUND FLOOR

1ST FLOOR



Call us on
01603 338433

norwich@thinkproperty.ltd
<https://www.thinkproperty.ltd/>

Council Tax Band
B

Energy Efficiency Rating		
	Current	Potential
Very energy efficient - lower running costs		
(92 plus) A		
(81-91) B		88
(69-80) C		
(55-68) D	64	
(39-54) E		
(21-38) F		
(1-20) G		
Not energy efficient - higher running costs		
England & Wales	EU Directive 2002/91/EC	

Agents Note: Whilst every care has been taken to prepare these particulars, they are for guidance purposes only. All measurements are approximate and are for general guidance purposes only and whilst every care has been taken to ensure their accuracy, they should not be relied upon and potential buyers are advised to recheck the measurements.

Whilst every attempt has been made to ensure the accuracy of the floorplan contained here, measurements of doors, windows, rooms and any other items are approximate and no responsibility is taken for any error, omission or mis-statement. This plan is for illustrative purposes only and should be used as such by any prospective purchaser. The services, systems and appliances shown have not been tested and no guarantee as to their operability or efficiency can be given.
Made with Metropix ©2023

