

**GRICE &
HUNTER**

Chartered Surveyors
Estate Agents & Valuers
Est 1924

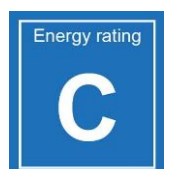


Studde Cottage, 1 Graizelound Fields Road, Haxey, DN9 2LN

- A Detached 2/3 Bedroom Dormer Bungalow on a generous plot • Spacious Lounge • Separate Dining Room/Bedroom 3/Study • Breakfast Kitchen and ground floor Bathroom • 2 double first floor Bedrooms and Cloakroom (wc) • Gas Central Heating and PVCu Double Glazing
- Garage • Potential to extend and/or remodel layout (subject to planning) •



£229,950 NO CHAIN



Description

An individual detached property offering well proportioned and manageable sized accommodation with scope for general upgrading and possible enlargement (subject to planning). The property is located at the Low Street end of Graizelound Fields Road within this well regarded village having the benefit of a range of facilities including Co-Op Food store, Surgery, Primary School, Village Hall, Hairdressers, Convenience Store, etc.

Haxey lies only 3 miles south of the small town of Epworth which includes an excellent range of amenities and junction 2 of the M180 is only about 6 miles to the north.

Accommodation (room sizes approx. only)

Ground Floor

Front Entrance HALL with radiator, understairs storage cupboard and PVCu exterior door.

LOUNGE (6.65m x 3.62m) a good sized through room with PVCu double glazed windows to front and side, radiator and decorative stone fireplace.

BEDROOM 3/DINING ROOM/STUDY (3.64m x 2.4m) with radiator and front facing PVCu double glazed window.

Breakfasting KITCHEN (4.11m x 3.64m) including fitted base and wall cupboards having work tops, stainless steel sink, radiator, combi boiler and rear facing PVCu double glazed window, plumbing for automatic washer and provision for gas cooker. Side entrance door.

BATHROOM (2.38m x 2.13m) being fully tiled to walls and including a 4 piece suite comprising bath, wash basin, wc and shower cubicle. Radiator and PVCu double glazing.

First Floor

BEDROOM 1 (3.65m x 4.0m) with radiator, front and side PVCu double glazed windows and access to large walk in eaves storage space.

BEDROOM 2 (3.65m x 4.0m) with radiator, PVCu double glazed window and eaves storage.

CLOAKROOM (1.75m x 0.77m) with PVCu double glazed window, wc and washbasin. Radiator.

OUTSIDE

Studde Cottage has extensive frontage with brick boundary walling, pedestrian access to the front entrance and driveway parking space for several cars.

Attached single brick Garage (5.6m x 3.0m) with up and over door and rear door.

Detached brick and tile outhouse (6.2m x 2.5m)

Side and rear gardens.

SERVICES (not tested)

Mains water, electricity, drainage and gas. Gas fired central heating from combination boiler.

LOCAL AUTHORITY

North Lincolnshire Council

COUNCIL TAX

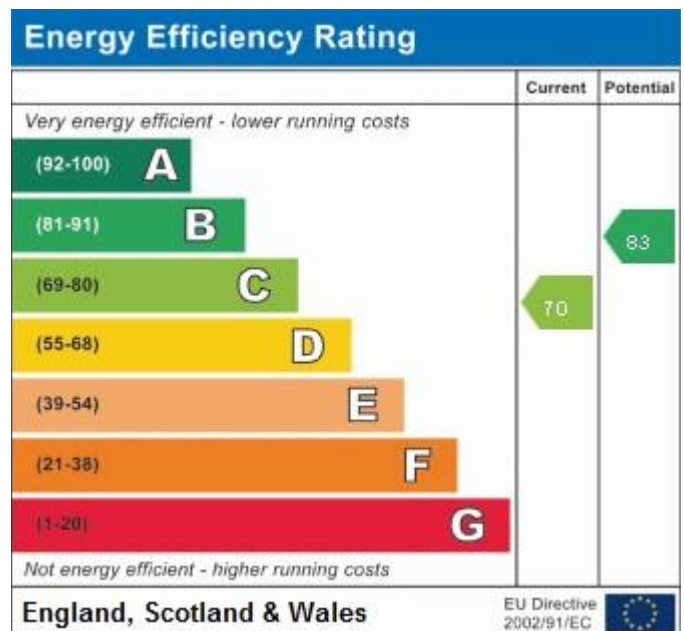
Band 'C' (on-line enquiry)

TENURE

Freehold assumed.

VIEWING

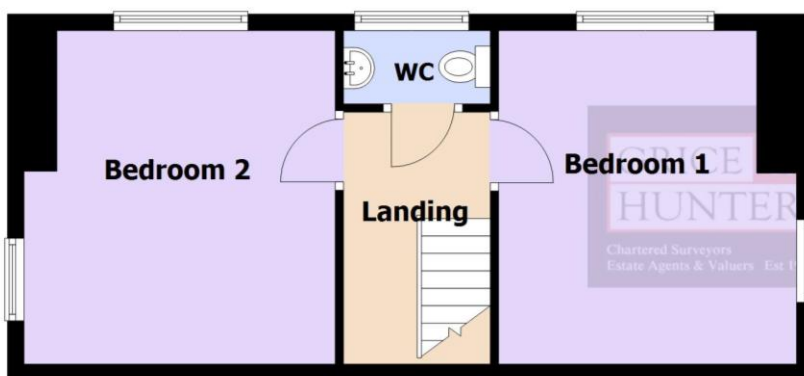
Strictly by prior appointment through Grice & Hunter
01427 873684





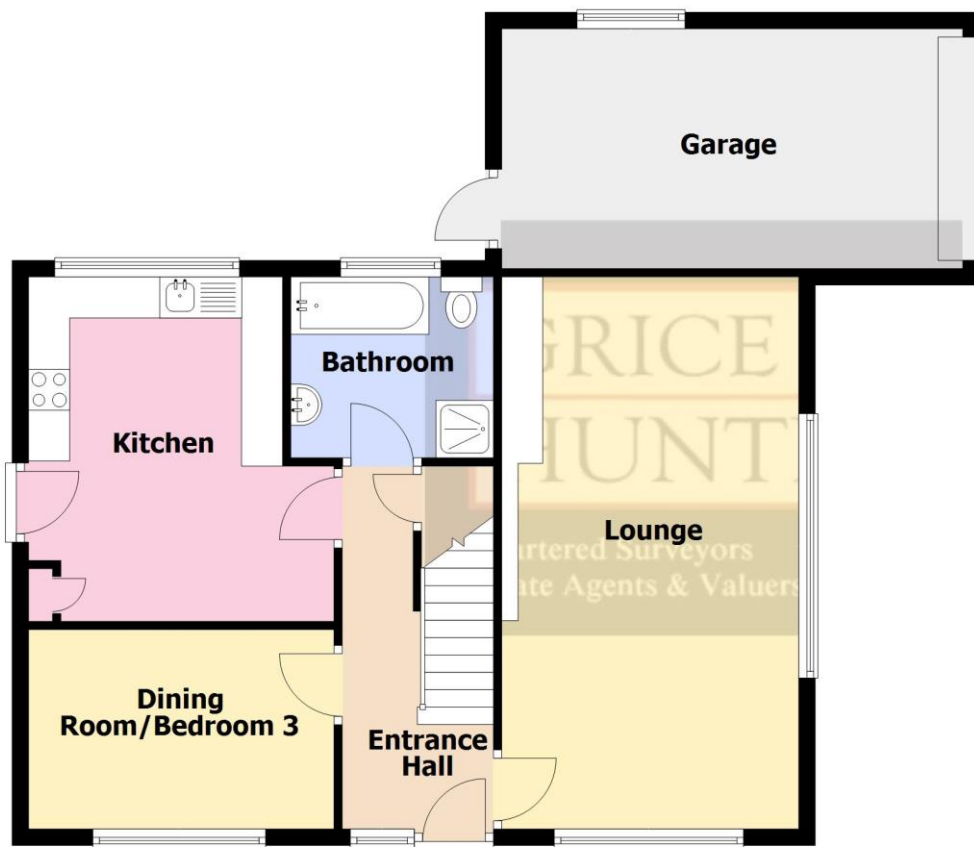
First Floor

Approx. 37.8 sq. metres (406.8 sq. feet)



Ground Floor

Approx. 79.5 sq. metres (856.2 sq. feet)



**23 High Street, Epworth,
Near Doncaster DN9 1EP
Tel: (01427) 873684
epworth@gricehunter.co.uk**

**7 Priory Place,
Doncaster DN1 1BL
Tel: (01302) 360141
doncaster@gricehunter.co.uk**

Consumer Protection Regulations

1. The mention of any appliances and/or services within these Sales Particulars does not imply they are in full and efficient working order.
2. All measurements, areas and distances are approximate only. Plans are for illustration purposes only and not to be used for Land Registry purposes.
3. Extracts from the Ordnance Survey are for identification purposes only and the surroundings may have changed. The plan may not be an accurate reflection of the actual boundaries and must not be used to depict legal boundaries.
4. Details regarding the Council Tax and Planning Permissions have been obtained by online or oral enquiry and we advise any interested parties to satisfy themselves with the relevant Local Authority.

Misrepresentation

Grice & Hunter give notice that these particulars are believed to be correct but their accuracy cannot be guaranteed and they do not constitute part of an offer or contract. Intending purchasers or tenants should not rely on them as statements or representations of fact, but must satisfy themselves by inspection or otherwise as to their accuracy. No person in employment of Grice & Hunter has authority to make or give any representation or warranty in relation to the property.