



**MANSELL
McTAGGART**
— Trusted since 1947 —



Flat 2, Dumbrells Court North End, Ditchling
£295,000



Flat 2

Dumbrells Court, North End, Ditchling,
BN6 8TG

This recently refurbished two bedroom ground floor flat is situated on the Dumbrells Court development of retirement homes comprising of houses bungalows and flats with its own communal landscaped gardens, the development is for the over 55's with its own security and a manager on site, Dumbrells Court lies on the north edge of the picturesque village of Ditchling which is in the south downs national park, worth also bearing in mind the property is being sold with no ongoing chain.

- 2 bedroom ground floor flat
- Desired location
- Over 55's
- Garage
- Recently refurbished
- No ongoing chain
- Shower room
- Communal gardens
- 118 year lease, Service Charge: £3,154.94 pa
- Council Tax: C, EPC: D



Flat 2

Dumbrells Court, North End, Ditchling, BN6 8TG

The entrance hall leads into a dual aspect living room making it extremely bright, the modern fitted high gloss kitchen has a selection of eye level and base units, integrated appliances including, washing machine, four ring gas hob, extractor fan, fridge freezer, oven, grill, and a glowworm gas combi boiler housed in a cupboard. An internal hall area with a useful cupboard storage space and two large double bedrooms with shutters and the master having fitted wardrobes, a shower room with its own cubicle, sink and vanity unit and WC. Outside the front has a large planted border which is paved in front, various communal garden areas which are well maintained. The flat also benefits from its own garage set in a compound.

Council Tax band: C

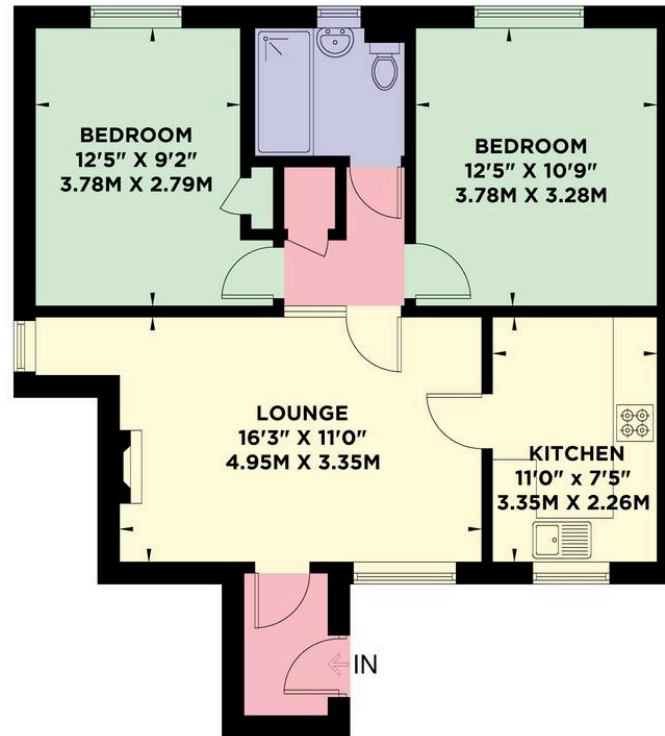
Tenure: Leasehold



**MANSELL
McTAGGART**
— Trusted since 1947 —

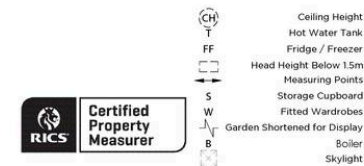
2 DUMBRELLS COURT

APPROXIMATE GROSS INTERNAL AREA
61.5 sq m / 661 sq ft



BESPOKE
PROPERTY MARKETING

Copyright Bespoke Property Marketing 2025
Floor plan is for illustration and identification purposes only and is not to scale. Plots, gardens, balconies and terraces are illustrative only and excluded from all area calculations. All site plans are for illustration purposes only and are not to scale. This floor plan has been produced in accordance with Royal Institution of Chartered Surveyors' International Property Standards 2 (IPMS2). Every attempt has been made to ensure the accuracy however all measurements, fixtures, fittings and data shown is an approximate interpretation for illustrative purposes only.



Mansell McTaggart Hassocks

Mansell McTaggart, 29 Keymer Road – BN6 8AB

01273 843377

has@mansellmctaggart.co.uk

www.mansellmctaggart.co.uk/branch/hassocks

**MANSELL
McTAGGART**
— Trusted since 1947 —

Consumer Protection from Unfair Trading Regulations 2008 We have not tested any apparatus, equipment, fixtures, fittings or services and so cannot verify that they are in working order or fit for purpose. You are advised to obtain verification from your solicitor or surveyor. References to the tenure of a property are based on information supplied by the seller. We have not had sight of the title documents and a buyer is advised to obtain verification from their solicitor. Items shown in photographs are not included unless specifically mentioned within the sales particulars, but may be available by separate negotiation.