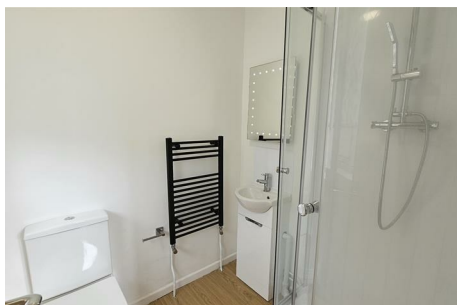


All together better residential property rental



## Room 7, 217 Arbury Road, Cambridge, CB4 2JJ

Newly refurbished single ensuite room available!

This newly refurbished single ensuite room boasts a contemporary design with a comfortable single bed, a stylish private bathroom featuring a modern shower enclosure, perfect for professionals seeking a private and updated living space.

Situated in a prime location, this property offers excellent public transport links and easy access to the A14, making commuting a breeze. Additionally, you'll find shops nearby for your everyday needs, adding to the convenience of the location.

One of the highlights of this property is the lovely rear garden, perfect for relaxing outdoors or entertaining guests on sunny days. And the best part? Bills are included, taking the hassle out of managing utilities.

Don't miss out on the opportunity to rent a room at 217 Arbury Road, call us now!

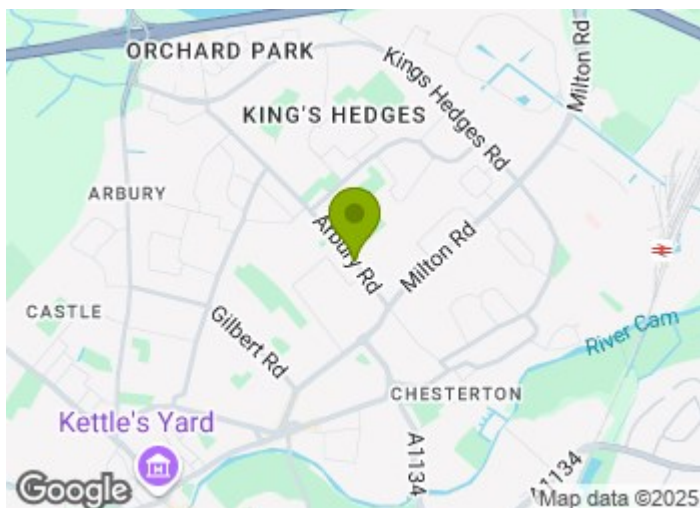
**£775 Per month**

## 217 Arbury Road , Cambridge, CB4 2JJ



- Bills Inclusive
- Private Garden
- EPC: D
- Central Location
- Furnished
- Single Ensuite Room
- Refurbished Property

[Disclaimer](#)

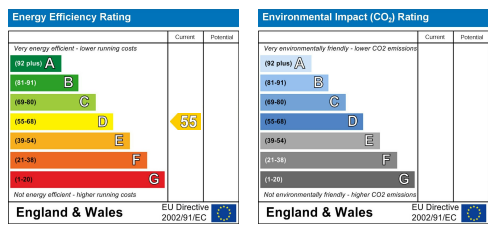


[Directions](#)



### Credit References and Deposit

Prospective tenants will be required to complete a credit referencing application payable whether successful or not. Prior to taking occupation of the property you will be required to pay a deposit of 1½ times the monthly rent, the first months rent in advance and an administration fee.



These particulars, whilst believed to be accurate are set out as a general outline only for guidance and do not constitute any part of an offer or contract. Intending purchasers should not rely on them as statements of representation of fact, but must satisfy themselves by inspection or otherwise as to their accuracy. No person in this firms employment has the authority to make or give any representation or warranty in respect of the property.

The Grange Market Street, Swavesey, Cambridgeshire, CB24 4QG  
 Tel: 01223 664200 Email: [enquiries@openarch.co.uk](mailto:enquiries@openarch.co.uk) [www.openarch.co.uk](http://www.openarch.co.uk)