



18 John Fulkes,
Thame, Oxfordshire,
OX9 3DN

Guide Price £515,000

RB REASTON BROWN

A Three Bedroom Semi Detached Property With Carport & Parking For Two Cars, Situated In A Popular Road Near The Centre Of The Beautiful, Market Town Of Thame.

Entering into a spacious entrance hall complete with under stair storage and giving access to the kitchen and living room. The kitchen offers high quality wall and base units with laminate worktops and an integrated dishwasher and washing machine. The living room is light and bright and benefits from double doors leading into the garden. A handy cloak room completes this level.

Upstairs there are three bedrooms, the master bedroom features fitted wardrobes along with an en-suite comprising a white suite with a power shower. The modern family bathroom comprising a white suite with a power shower over the bath completes the first floor.

Outside to the front is a small shrub garden, with carport and two parking spaces. The garden at the rear is predominantly laid to artificial lawn with a patio area, ideal for outdoor entertaining.

Gas radiator central heating. EPC: B and Council Tax: D

Maintenance Charge: £557.56

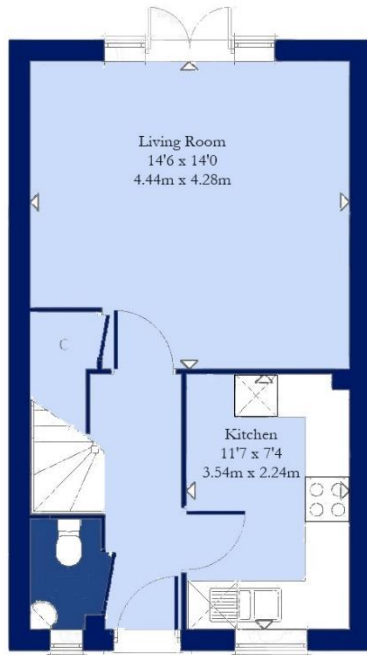
Situation

Thame is vibrant market town situated on the Oxon/Bucks borders, much enjoyed by its inhabitants. There are many independent shops, delicatessens, and a Waitrose. Thame is steeped in history, with beautiful buildings and medieval churches. On the social side it has award winning bars and restaurants, you could have breakfast at Black Goo or a pleasant lunch at the Six Bells and dinner at the Thatch. Thame also has a health centre and a cottage hospital, sports facilities, and excellent schooling, including a Catholic school, Church of England school and the sought after Lord Williams secondary school. There is also access to the grammar schools in Buckinghamshire. London Marylebone can be reached in 34 minutes via Haddenham & Thame Parkway Station and M40 junction 7 for access to London, Birmingham and the Northern Networks is nearby. Thame also has a good bus service to Oxford, Aylesbury, and the neighbouring villages, which have walks, country pubs and beautiful scenery through the Chiltern Hills.

The property comprises the following with all dimensions being approximate only. Please note that Reaston Brown has not tested appliances or systems and no warranty as to condition or suitability is confirmed or implied. Any prospective purchaser is advised to obtain verification from their Surveyor or Solicitor.







Ground Floor



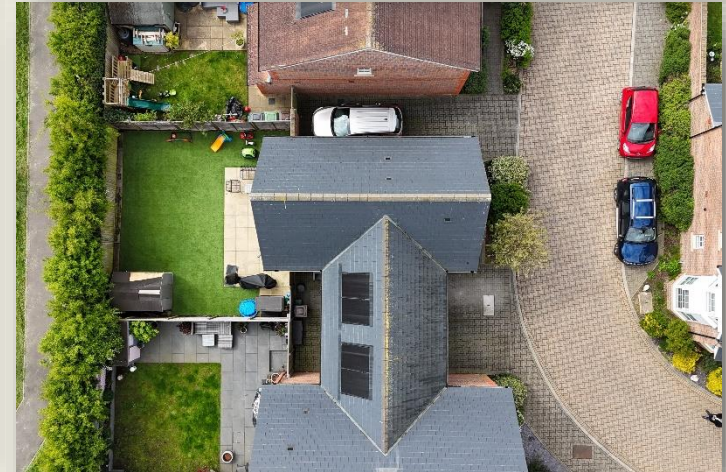
First Floor



Approx. Gross Internal Floor Area 904 Sq Ft (84 Sq M)

18 John Fulkes Avenue, Thame, Oxfordshire, OX9 3DN

All measurements of walls, doors, windows and fitting and appliances, including their size and location, are shown as standard sizes and therefore cannot be regarded as a representation by the seller.



Viewing is Strictly by Appointment through Reaston Brown

www.reastonbrown.co.uk Email: sales@reastonbrown.co.uk

94 High Street . Thame . Oxfordshire . OX9 3EH Tel: +44(0) 1844 260626
 2-4 Windmill Road, Headington, Oxford, OX3 7BU Tel : +44(0) 1865 308855
 119-121 Park Lane . London . W1K 7AG. Tel : +44(0) 207 079 1589

Sales, Lettings, Commercial & Chartered Surveying

