

2  
BED

type your text here  
14, Denton Road, Newhaven, BN9 0PX



£1,425 Per Calendar Month

**phillipmann**  
we do more

[www.phillipmann.com](http://www.phillipmann.com)





## inbrief...

Phillip Mann estate agents are pleased to offer for rent this two bedroom semi-detached house located in Denton Village. The property has been well maintained over recent years and benefits from gas fired central heating and double glazed windows.

The property is accessed via a part glazed entrance door which leads into the entrance hall, from here you have access to the downstairs accommodation.

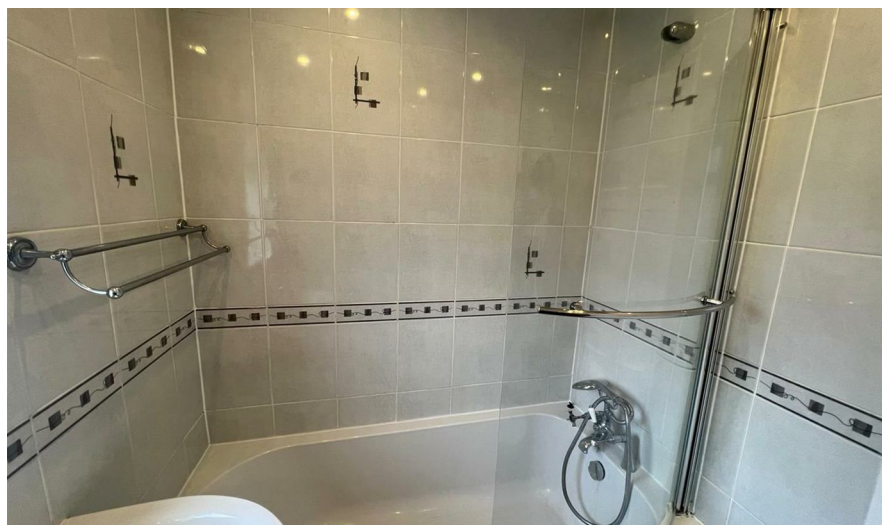
The through lounge/diner is a generous size room with an understairs storage cupboard and ample space for a dining room table. A window overlooks the front and patio doors gives access onto the rear garden.

The kitchen has been refitted with a range of wall and base units. A sink unit is set into solid wood work-surfaces. The first floor landing has access to the loft space and the remainder of the accommodation. Bedroom one is a generous size double with two built in double wardrobes and a window overlooking the front with open views across Denton Village. Bedroom two is a further double with built in wardrobes and a window overlooking the rear. Completing the property is a family bathroom fitted with a white suite comprising of a panelled bath, low level WC and wash hand basin.

Outside there is a good size rear garden which is fence enclosed. There is side & rear access, outside tap and electric point.

The front garden is landscaped with steps leading to the front door. PLEASE NOTE THE GARAGE IS NOT PART OF THE LET

Denton Road is located close to Denton primary school and within walking distance to mainline bus routes to Eastbourne, Seaford and Brighton.



Energy Rating D

Council Tax C

moreinfo...



Phillip Mann Lettings Office  
16 Bridge Street, Newhaven, East Sussex, BN9 9PJ  
01273 517 517

To see more details on this & all our homes go to  
[www.phillipmann.com](http://www.phillipmann.com)