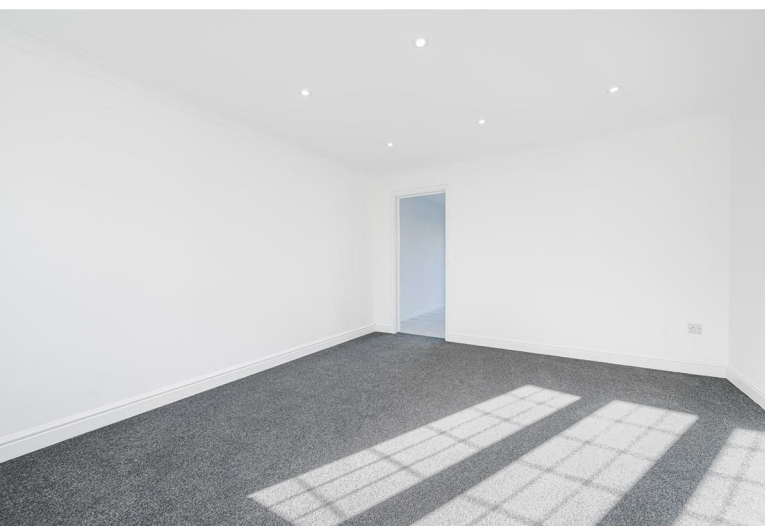


4
BED

type your text here
23, Bridle Way, Peacehaven, BN10 7DF



£1,800 Per Calendar Month

phillipmann
we do more

www.phillipmann.com



inbrief...

We are pleased to offer for let this 4 bedroom house in the popular Telscombe Cliffs area of Peacehaven. Close to all amenities and superbly presented, the accommodation in brief comprises; and has recently been renovated and upgraded

Front - off road parking and canopy entrance

Lounge - Situated at the front with space for your soft furnishings.

Kitchen / Dining Area - Opened planned at the rear with sliding door to garden. The kitchen features a range of wall and base units, space for fridge freezer and dishwasher, eye level oven, hob, inset sink and understairs storage. The dining area has room for freestanding furniture with a pleasant outlook to garden.

Utility - Further space for white goods.

Bedroom 4 - garage conversion, double room with window to front.

Landing - airing cupboard and hatch to loft space

Bedroom 1 - Double overlooking the front with inset wardrobes

Bedroom 2 - Double room overlooking rear with inset cupboard.

Bedroom 3 - Single room to front

Bathroom - Bath with mixer tap and overhead shower attachments, wash basin, w/c and frosted window to rear.

Garden - Mostly laid to lawn with patio area and useful side access.

VIEWINGS ADVISED



moreinfo...

Phillip Mann Lettings Office
16 Bridge Street, Newhaven, East Sussex, BN9 9PJ
01273 517 517

To see more details on this & all our homes go to
www.phillipmann.com

