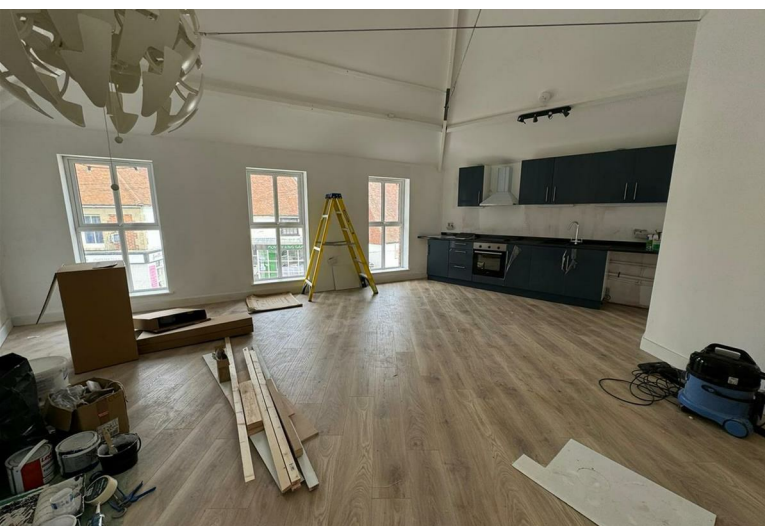


2
BED

type your text here
5, George Street, Hailsham, BN27 1AD



£1,200 Per Calendar Month

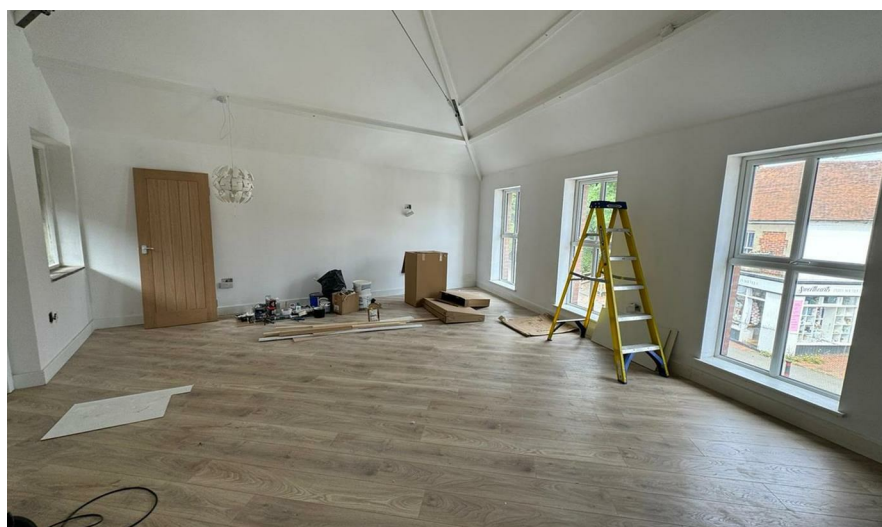
phillipmann
we do more

www.phillipmann.com



inbrief...

Superb Renovated 2 Bedroom Apartment with 2 Allocated Parking Spaces - Must be Viewed to Appreciate. The accommodation comprises Communal Entrance leading to Front Door with storage area, stairs rise to First Floor Landing with 2 Good Size Bedrooms, further stairs lead to Fitted Shower Room/WC, Open Plan and Spacious Lounge/Kitchen with fitted range of Kitchen units, integrated oven/hob, cupboard with plumbing for washing machine and windows overlooking George Street. Unfurnished Electric and Water included in the Rent



moreinfo...

Phillip Mann Lettings Office
16 Bridge Street, Newhaven, East Sussex, BN9 9PJ
01273 517 517

To see more details on this & all our homes go to
www.phillipmann.com

