

3
BED

type your text here
49, Victoria Road, East Sussex, BN26 6DA



£1,700 Per Calendar Month

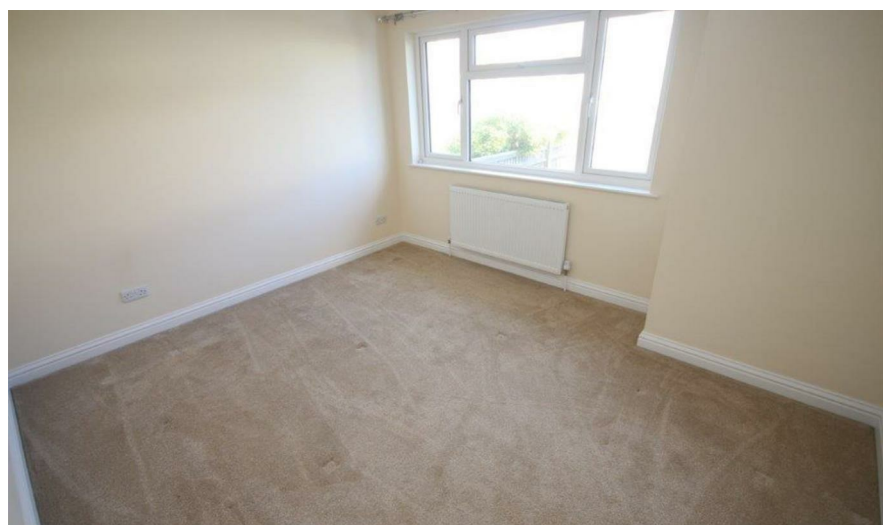
phillipmann
we do more

www.phillipmann.com



inbrief...

3 Bedroom Spacious Semi-Detached House with Double Width Garage and Large Garden - conveniently situated within walking distance of Polegate Railway Station and High Street. Must be Viewed to Fully Appreciate. Entrance Hall, Large Spacious Kitchen/Dining Room with French doors onto garden with range of white high gloss wall and base units and stainless steel effect range style oven with five burner hob, Good Size Dining Area, Separate Lounge to Front, Cloakroom with vanity unit, Staircase to First Floor Landing, Master Bedroom to Front, 2 Further Bedrooms, Bathroom suite with square ended Bath with Shower over, wash hand basin set into vanity unit. Large level Garden with access to Garage and Purpose Built Pitched Roof Shed. Driveway leading to Double Width Garage with Electric Roller Door.



moreinfo...

Phillip Mann Lettings Office
16 Bridge Street, Newhaven, East Sussex, BN9 9PJ
01273 517 517

To see more details on this & all our homes go to
www.phillipmann.com

