

2
BED

type your text here
5, Falaise, Newhaven, BN9 9GG



£1,300 Per Calendar Month

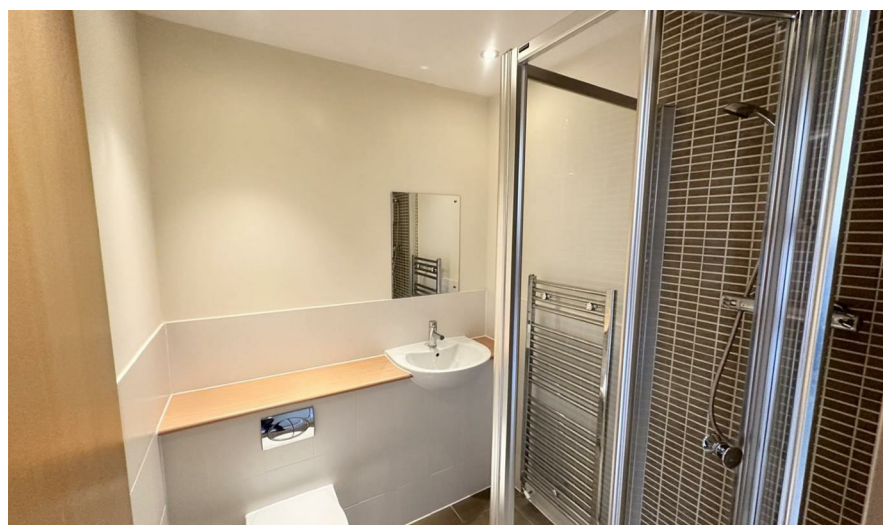
phillipmann
we do more

www.phillipmann.com



inbrief...

Superb 2 Bedroom Third Floor Apartment situated in the popular West Quay development of Newhaven Marina being conveniently situated within easy reach of Newhaven Town and Railway Station. The accommodation comprises Communal Entrance Hall with Stairs or Passenger Lift to Third Floor, Private Entrance Hall, Good Size Open Plan Lounge/Diner and Fully Fitted 'Paula Rosa' Kitchen with appliances. Balcony opens from Lounge Area enjoying views across the river and towards the English Channel, Modern Bathroom/WC, Master Bedroom with Modern Ensuite Shower/WC with both bedrooms having built-in wardrobes, Secure Allocated Parking Space. Must be Viewed



moreinfo...

Phillip Mann Lettings Office
16 Bridge Street, Newhaven, East Sussex, BN9 9PJ
01273 517 517

To see more details on this & all our homes go to
www.phillipmann.com

