

2
BED

type your text here

9 Belgrave Place, Wilmington Road, Seaford, BN25 2LB



£1,250 Per Calendar Month

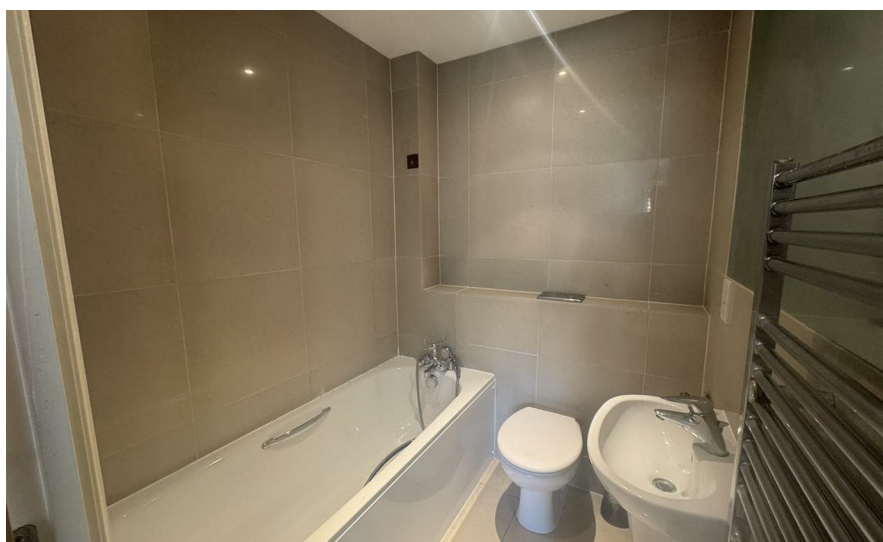
phillipmann
we do more

www.phillipmann.com



inbrief...

Superb First Floor Flat situated in this favoured block, close to town, local shops, main bus routes and schools with allocated parking space and communal gardens. The accommodation comprises Communal Entrance with Video Door Entry System, Private Entrance Hall, Lounge doors to a Juliette balcony, Fitted Kitchen with integrated appliances, Bedroom with Ensuite Bathroom/WC, Further separate shower room. Must be Viewed to Appreciate. Unfurnished.



moreinfo...

Phillip Mann Lettings Office
16 Bridge Street, Newhaven, East Sussex, BN9 9PJ
01273 517 517

To see more details on this & all our homes go to
www.phillipmann.com

