

2
BED

type your text here
1b, Belgrave Road, Seaford, BN25 2EE



£1,450 Per Calendar Month

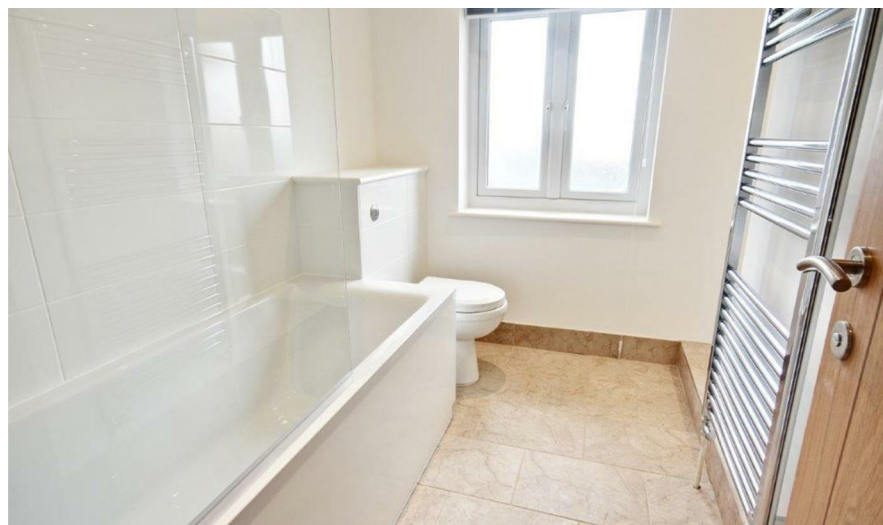
phillipmann
we do more

www.phillipmann.com



inbrief...

2 Bedroom End of Terrace House ideally situated being within easy reach of local shops, buses, schools and the Town Centre. The property must be viewed to fully appreciate and comprises Entrance Hall, Cloakroom/WC, Modern Fitted Kitchen with a range of charcoal grey high gloss units with integrated appliances, Good Size Lounge with French doors overlooking and affording access to Garden, Stairs to First Floor Landing, Master Bedroom enjoying views towards Seaford Head and the sea, Bedroom 2, Modern Bathroom, Good Size Level Garden, Driveway. Unfurnished.



moreinfo...

Phillip Mann Lettings Office
16 Bridge Street, Newhaven, East Sussex, BN9 9PJ
01273 517 517



To see more details on this & all our homes go to
www.phillipmann.com