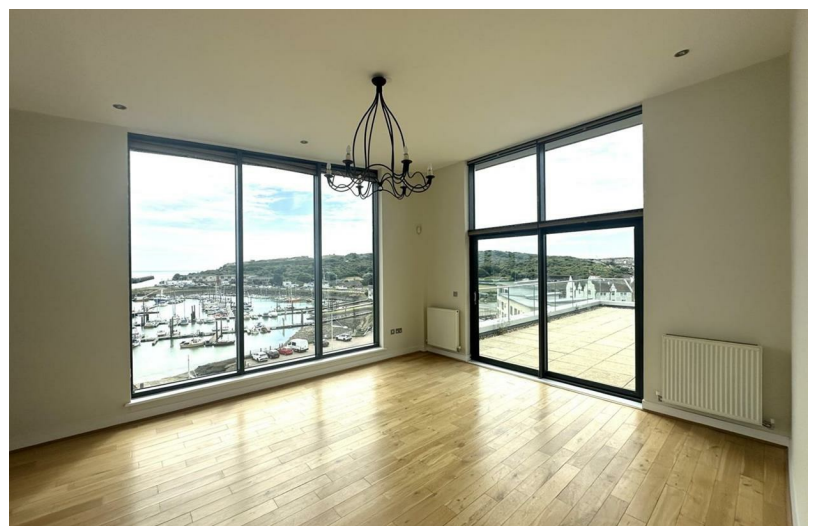


3
BED

type your text here
21 Versailles , West Quay, NEWHAVEN, BN9 9GE



£1,800 Per Calendar Month

phillipmann
we do more

www.phillipmann.com



inbrief...

Rare Opportunity to Rent this Penthouse Apartment with stunning views of Newhaven Harbour extending towards Seaford Bay and a 360 view of the surrounding area towards Newhaven Fort, Fort Road and the river. The Apartment benefits from a rooftop terrace garden again enjoying superb views. Ideally situated within Newhaven Marina and within easy reach of the Town Centre, Bus Routes and the Train station, the Apartment must be viewed to appreciate and benefits from Passenger Lift or Stairs to the Penthouse, Gas Central Heating, Allocated Parking. The accommodation comprises Entrance Hall, Large Lounge with full length window to the front with enviable views of the Harbour, Patio doors onto large garden terrace measuring 31', Fitted Kitchen again enjoying views and access via patio door to the Balcony area - the kitchen benefits from integrated oven, hob, fridge/freezer, dishwasher and washing machine as well as ample range of wall and base units, Master Bedroom with large built-in wardrobes - enviable views and Ensuite Bath/Shower Room with bath and separate Shower Cubicle, Bedroom 2 Ensuite Shower Room and views, Bedroom 3/Study, Separate Cloakroom, Storage Area. Unfurnished. Must be Viewed.



moreinfo...

Phillip Mann Lettings Office
16 Bridge Street, Newhaven, East Sussex, BN9 9PJ
01273 517 517

To see more details on this & all our homes go to
www.phillipmann.com

