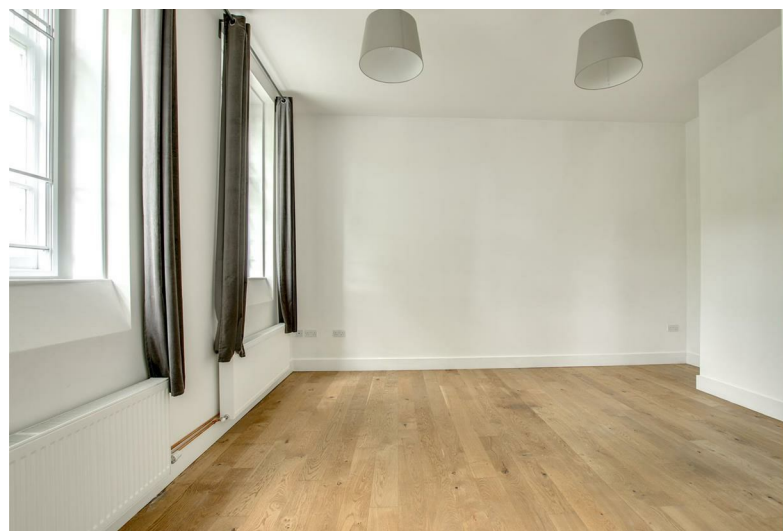


2
BED

Ground Floor Flat

Flat 2, Kempthorne House, Newhaven, BN9 9NZ



£1,100 Per Calendar Month

phillipmann
we do more

www.phillipmann.com



TOTAL APPROX. FLOOR AREA 62.9 SQ.M. (677 SQ.FT.)
Measurements are approximate. Not to scale. Illustrative purposes only
Made with Metropix ©2019

inbrief...

Phillip Mann Estate Agents are pleased to offer this spacious two bedroom flat in a converted Grade 2 listed building. The entrance door leads into the spacious entrance hall with a storage cupboard and access to the remainder of the accommodation. There are two good size double bedrooms that are carpeted. The open plan lounge/kitchen is fitted with a built in oven & hob with space for all appliances. The bathroom is fitted with a bath and shower over, low flush WC and wash hand basin. Parking. Must be viewed. Unfurnished



moreinfo...

Phillip Mann Lettings Office
16 Bridge Street, Newhaven, East Sussex, BN9 9PJ
01273 517 517



To see more details on this & all our homes go to
www.phillipmann.com