



Broadley Terrace, NW1

£1,200 Per week

SHORT LET. A two bedroom, two bathroom apartment in a modern gated development close to Regent's Park. The property has a reception room, separate kitchen and guest WC on the first floor, and two en suite double bedrooms on the second floor.

The development has on-site concierge, an indoor swimming pool and gym facilities. A secure parking space is underneath the building. The property is located moments from Marylebone and Baker Street stations. The A40 and Paddington Station are within easy reach.

Features

SHORT LET
Two Bedrooms
Two Bathrooms
Guest WC
Separate Kitchen
On-Site Concierge
Swimming Pool & Gym

Broadley Terrace, London, NW1

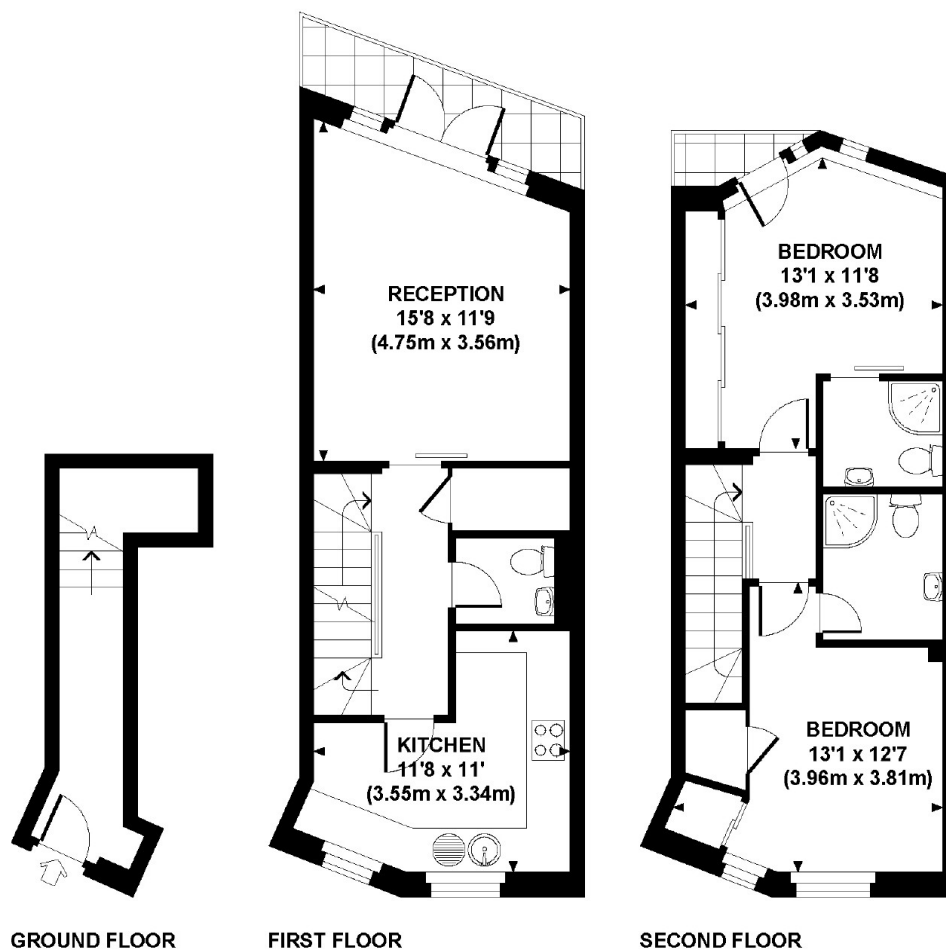
PORTMAN GATE, BROADLEY TERRACE, NW1

Approx. gross internal area

804 Sq Ft / 74.7 Sq M.

Representation of current layout

Not to scale.



Dexters

Marylebone
53-55 Weymouth Street
London
W1G 8NJ
Lettings
0207 224 5545

Energy Rating: C. We aim to make our particulars both accurate and reliable. However they are not guaranteed; nor do they form part of an offer or contract. If you require clarification on any points then please contact us, especially if you're traveling some distance to view. Please note that appliances and heating systems have not been tested and therefore no warranties can be given as to their good working order.



dexters.co.uk